

CCDC120 Antibody (N-term)
Affinity Purified Rabbit Polyclonal Antibody (Pab)
Catalog # AP13363a**Specification**

CCDC120 Antibody (N-term) - Product Information

Application	WB,E
Primary Accession	Q96HB5
Other Accession	NP_001156793.1 , NP_001156794.1 , NP_296375.1 , NP_001156795.1
Reactivity	Human
Host	Rabbit
Clonality	Polyclonal
Isotype	Rabbit IgG
Calculated MW	67567
Antigen Region	59-88

CCDC120 Antibody (N-term) - Additional Information**Gene ID** 90060**Other Names**

Coiled-coil domain-containing protein 120, CCDC120

Target/Specificity

This CCDC120 antibody is generated from rabbits immunized with a KLH conjugated synthetic peptide between 59-88 amino acids from the N-terminal region of human CCDC120.

Dilution

WB~~1:1000

E~~Use at an assay dependent concentration.

Format

Purified polyclonal antibody supplied in PBS with 0.09% (W/V) sodium azide. This antibody is purified through a protein A column, followed by peptide affinity purification.

Storage

Maintain refrigerated at 2-8°C for up to 2 weeks. For long term storage store at -20°C in small aliquots to prevent freeze-thaw cycles.

Precautions

CCDC120 Antibody (N-term) is for research use only and not for use in diagnostic or therapeutic procedures.

CCDC120 Antibody (N-term) - Protein Information**Name** CCDC120

Function Centriolar protein required for centriole subdistal appendage assembly and microtubule anchoring in interphase cells (PubMed:[28422092](#)). Together with CCDC68, cooperate with subdistal appendage components ODF2, NIN and CEP170 for hierarchical subdistal appendage assembly (PubMed:[28422092](#)). Recruits NIN and CEP170 to centrosomes (PubMed:[28422092](#)). Also required for neurite growth. Localizes CYTH2 to vesicles to allow its transport along neurites, and subsequent ARF6 activation and neurite growth.

Cellular Location

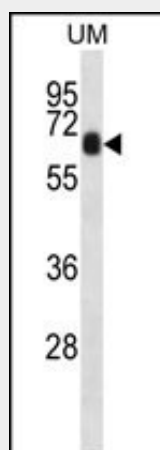
Cytoplasm, cytoskeleton, microtubule organizing center, centrosome, centriole. Cytoplasm. Cell projection, neuron projection. Cell projection, growth cone. Endosome Note=Localizes to the subdistal appendages of mother centrioles and proximal ends of both centrioles in interphase cells (PubMed:[28422092](#)) Recruited to subdistal appendages by ODF2 (PubMed:[28422092](#)). In differentiating neuroblastoma cells, colocalizes with CYTH2 in both neurite shaft and growth cone areas (PubMed:[25326380](#)). Partially colocalizes with endosomes along neurites in differentiating neuroblastoma cells (PubMed:[25326380](#)).

CCDC120 Antibody (N-term) - Protocols

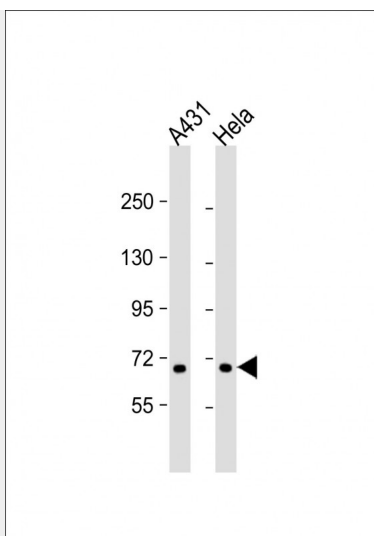
Provided below are standard protocols that you may find useful for product applications.

- [Western Blot](#)
- [Blocking Peptides](#)
- [Dot Blot](#)
- [Immunohistochemistry](#)
- [Immunofluorescence](#)
- [Immunoprecipitation](#)
- [Flow Cytometry](#)
- [Cell Culture](#)

CCDC120 Antibody (N-term) - Images



CCDC120 Antibody (N-term) (Cat. #AP13363a) western blot analysis in uterus tumor cell line lysates (35ug/lane). This demonstrates the CCDC120 antibody detected the CCDC120 protein (arrow).



All lanes : Anti-CCDC120 Antibody (N-term) at 1:1000 dilution Lane 1: A431 whole cell lysate Lane 2: HeLa whole cell lysate Lysates/proteins at 20 μ g per lane. Secondary Goat Anti-Rabbit IgG, (H+L), Peroxidase conjugated at 1/10000 dilution. Predicted band size : 68 kDa Blocking/Dilution buffer: 5% NFDm/TBST.

CCDC120 Antibody (N-term) - Background

This gene encodes a protein that contains a coiled-coil domain. Four alternatively spliced transcript variants that encode different protein isoforms have been described for this gene.

CCDC120 Antibody (N-term) - References

Xin, X., et al. Genome Res. 19(7):1262-1269(2009)
Tarpey, P.S., et al. Nat. Genet. 41(5):535-543(2009)
Matsuoka, S., et al. Science 316(5828):1160-1166(2007)