

**SLIT1 Antibody (N-term)**  
**Affinity Purified Rabbit Polyclonal Antibody (Pab)**  
**Catalog # AP13374a**

**Specification**

---

**SLIT1 Antibody (N-term) - Product Information**

Application	WB, IHC-P,E
Primary Accession	<a href="#">O75093</a>
Other Accession	<a href="#">O88279</a> , <a href="#">Q80TR4</a> , <a href="#">NP_003052.2</a>
Reactivity	Human, Mouse
Predicted	Rat
Host	Rabbit
Clonality	Polyclonal
Isotype	Rabbit IgG
Antigen Region	84-113

**SLIT1 Antibody (N-term) - Additional Information**

**Gene ID** 6585

**Other Names**

Slit homolog 1 protein, Slit-1, Multiple epidermal growth factor-like domains protein 4, Multiple EGF-like domains protein 4, SLIT1, KIAA0813, MEGF4, SLIL1

**Target/Specificity**

This SLIT1 antibody is generated from rabbits immunized with a KLH conjugated synthetic peptide between 84-113 amino acids from the N-terminal region of human SLIT1.

**Dilution**

WB~~1:1000

IHC-P~~1:10~50

E~~Use at an assay dependent concentration.

**Format**

Purified polyclonal antibody supplied in PBS with 0.09% (W/V) sodium azide. This antibody is purified through a protein A column, followed by peptide affinity purification.

**Storage**

Maintain refrigerated at 2-8°C for up to 2 weeks. For long term storage store at -20°C in small aliquots to prevent freeze-thaw cycles.

**Precautions**

SLIT1 Antibody (N-term) is for research use only and not for use in diagnostic or therapeutic procedures.

**SLIT1 Antibody (N-term) - Protein Information**

**Name** SLIT1

**Synonyms** KIAA0813, MEGF4, SLIL1

**Function** Thought to act as molecular guidance cue in cellular migration, and function appears to be mediated by interaction with roundabout homolog receptors. During neural development involved in axonal navigation at the ventral midline of the neural tube and projection of axons to different regions (By similarity). SLIT1 and SLIT2 together seem to be essential for midline guidance in the forebrain by acting as repulsive signal preventing inappropriate midline crossing by axons projecting from the olfactory bulb.

**Cellular Location**  
Secreted.

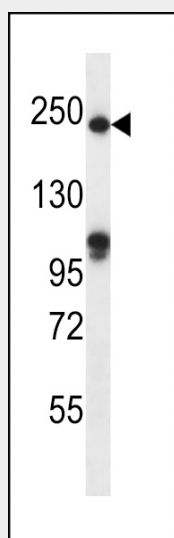
**Tissue Location**  
Predominantly expressed in adult forebrain. Expressed in fetal brain, lung and kidney

### SLIT1 Antibody (N-term) - Protocols

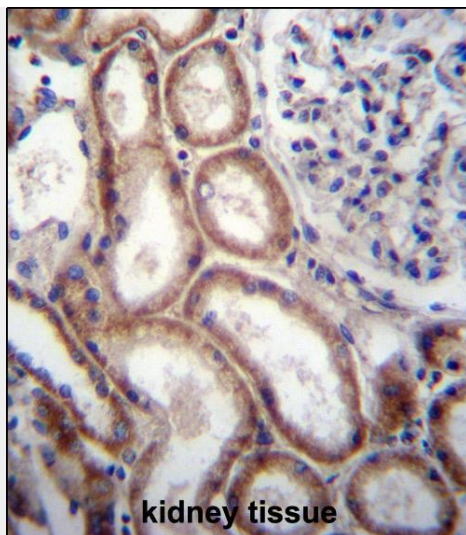
Provided below are standard protocols that you may find useful for product applications.

- [Western Blot](#)
- [Blocking Peptides](#)
- [Dot Blot](#)
- [Immunohistochemistry](#)
- [Immunofluorescence](#)
- [Immunoprecipitation](#)
- [Flow Cytometry](#)
- [Cell Culture](#)

### SLIT1 Antibody (N-term) - Images



SLIT1 Antibody (N-term) (Cat. #AP13374a) western blot analysis in mouse heart tissue lysates (35ug/lane). This demonstrates the SLIT1 antibody detected the SLIT1 protein (arrow).



SLIT1 Antibody (N-term) (Cat. #AP13374a) immunohistochemistry analysis in formalin fixed and paraffin embedded human kidney tissue followed by peroxidase conjugation of the secondary antibody and DAB staining. This data demonstrates the use of SLIT1 Antibody (N-term) for immunohistochemistry. Clinical relevance has not been evaluated.

#### **SLIT1 Antibody (N-term) - Background**

Thought to act as molecular guidance cue in cellular migration, and function appears to be mediated by interaction with roundabout homolog receptors. During neural development involved in axonal navigation at the ventral midline of the neural tube and projection of axons to different regions (By similarity). SLIT1 and SLIT2 together seem to be essential for midline guidance in the forebrain by acting as repulsive signal preventing inappropriate midline crossing by axons projecting from the olfactory bulb.

#### **SLIT1 Antibody (N-term) - References**

Marlow, R., et al. Cancer Res. 68(19):7819-7827(2008)  
Hussain, S.A., et al. J. Biol. Chem. 281(51):39693-39698(2006)  
Lin, L., et al. Stem Cells 24(11):2504-2513(2006)  
Lim, J., et al. Cell 125(4):801-814(2006)  
Grupe, A., et al. Am. J. Hum. Genet. 78(1):78-88(2006)