

BEAN Antibody (N-term)
Affinity Purified Rabbit Polyclonal Antibody (Pab)
Catalog # AP13386a**Specification**

BEAN Antibody (N-term) - Product Information

Application	WB, IHC-P,E
Primary Accession	Q3B7T3
Other Accession	NP_001129578.1 , NP_001171491.1
Reactivity	Human
Host	Rabbit
Clonality	Polyclonal
Isotype	Rabbit IgG
Calculated MW	28626
Antigen Region	45-73

BEAN Antibody (N-term) - Additional Information**Gene ID** 146227**Other Names**

Protein BEAN1, Brain-expressed protein associating with Nedd4 homolog, BEAN, BEAN1

Target/Specificity

This BEAN antibody is generated from rabbits immunized with a KLH conjugated synthetic peptide between 45-73 amino acids from the N-terminal region of human BEAN.

Dilution

WB~~1:1000

IHC-P~~1:10~50

Format

Purified polyclonal antibody supplied in PBS with 0.09% (W/V) sodium azide. This antibody is purified through a protein A column, followed by peptide affinity purification.

Storage

Maintain refrigerated at 2-8°C for up to 2 weeks. For long term storage store at -20°C in small aliquots to prevent freeze-thaw cycles.

Precautions

BEAN Antibody (N-term) is for research use only and not for use in diagnostic or therapeutic procedures.

BEAN Antibody (N-term) - Protein Information**Name** BEAN1**Cellular Location**

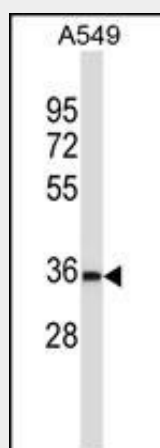
Membrane; Single-pass membrane protein

BEAN Antibody (N-term) - Protocols

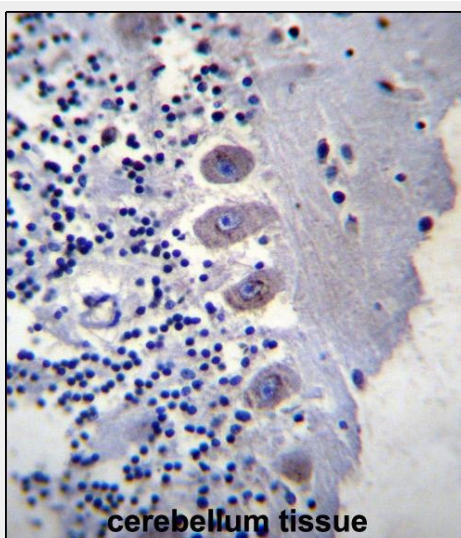
Provided below are standard protocols that you may find useful for product applications.

- [Western Blot](#)
- [Blocking Peptides](#)
- [Dot Blot](#)
- [Immunohistochemistry](#)
- [Immunofluorescence](#)
- [Immunoprecipitation](#)
- [Flow Cytometry](#)
- [Cell Culture](#)

BEAN Antibody (N-term) - Images



BEAN Antibody (N-term) (Cat. #AP13386a) western blot analysis in A549 cell line lysates (35ug/lane). This demonstrates the BEAN antibody detected the BEAN protein (arrow).



BEAN Antibody (N-term) (Cat. #AP13386a) immunohistochemistry analysis in formalin fixed and paraffin embedded human cerebellum tissue followed by peroxidase conjugation of the secondary

antibody and DAB staining. This data demonstrates the use of BEAN Antibody (N-term) for immunohistochemistry. Clinical relevance has not been evaluated.

BEAN Antibody (N-term) - Background

The protein encoded by this gene is one of several proteins that interact with NEDD4, a member of a family of ubiquitin-protein ligases. These proteins have PY motifs in common that bind to the WW domains of NEDD4. NEDD4 is developmentally regulated, and is highly expressed in embryonic tissues. Mutations in this gene (i.e., intronic insertions of >100 copies of pentanucleotide repeats including a (TGGAA)_n sequence) are associated with spinocerebellar ataxia type 31. Alternatively spliced transcript variants encoding different isoforms have been found for this gene.

BEAN Antibody (N-term) - References

Sato, N., et al. Am. J. Hum. Genet. 85(5):544-557(2009)
Jolliffe, C.N., et al. Biochem. J. 351 PT 3, 557-565 (2000) :