

TTC15 Antibody (C-term)
Affinity Purified Rabbit Polyclonal Antibody (Pab)
Catalog # AP13387b

Specification

TTC15 Antibody (C-term) - Product Information

Application	IHC-P, WB,E
Primary Accession	Q8WVT3
Other Accession	Q8K2L8 , NP_057114.5
Reactivity	Human
Predicted	Mouse
Host	Rabbit
Clonality	Polyclonal
Isotype	Rabbit IgG
Calculated MW	79375
Antigen Region	579-608

TTC15 Antibody (C-term) - Additional Information

Gene ID 51112

Other Names

Trafficking protein particle complex subunit 12, Tetratricopeptide repeat protein 15, TPR repeat protein 15, TTC-15, TRAPPC12, TTC15

Target/Specificity

This TTC15 antibody is generated from rabbits immunized with a KLH conjugated synthetic peptide between 579-608 amino acids from the C-terminal region of human TTC15.

Dilution

IHC-P~~1:10~50

WB~~1:1000

E~~Use at an assay dependent concentration.

Format

Purified polyclonal antibody supplied in PBS with 0.09% (W/V) sodium azide. This antibody is purified through a protein A column, followed by peptide affinity purification.

Storage

Maintain refrigerated at 2-8°C for up to 2 weeks. For long term storage store at -20°C in small aliquots to prevent freeze-thaw cycles.

Precautions

TTC15 Antibody (C-term) is for research use only and not for use in diagnostic or therapeutic procedures.

TTC15 Antibody (C-term) - Protein Information

Name TRAPPC12 ([HGNC:24284](#))

Function Component of the TRAPP complex, which is involved in endoplasmic reticulum to Golgi apparatus trafficking at a very early stage (PubMed:[21525244](#), PubMed:[28777934](#)). Also plays a role in chromosome congression, kinetochore assembly and stability and controls the recruitment of CENPE to the kinetochores (PubMed:[25918224](#)).

Cellular Location

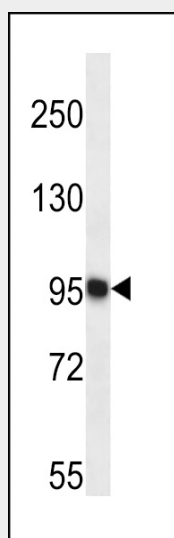
Endoplasmic reticulum-Golgi intermediate compartment. Nucleus. Note=Mainly localizes to structures resembling the Golgi and a small amount is found in the nucleus

TTC15 Antibody (C-term) - Protocols

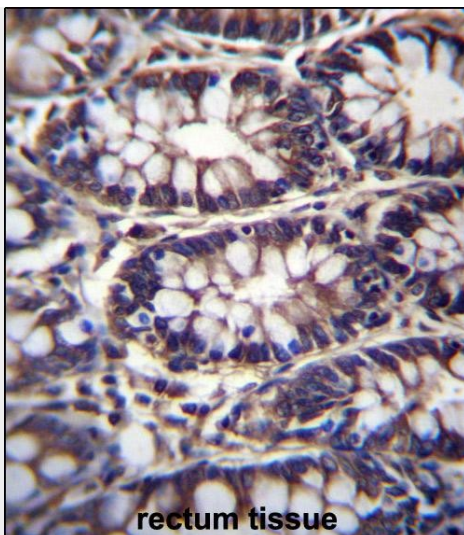
Provided below are standard protocols that you may find useful for product applications.

- [Western Blot](#)
- [Blocking Peptides](#)
- [Dot Blot](#)
- [Immunohistochemistry](#)
- [Immunofluorescence](#)
- [Immunoprecipitation](#)
- [Flow Cytometry](#)
- [Cell Culture](#)

TTC15 Antibody (C-term) - Images



TTC15 Antibody (C-term) (Cat. #AP13387b) western blot analysis in K562 cell line lysates (35ug/lane). This demonstrates the TTC15 antibody detected the TTC15 protein (arrow).



TTC15 Antibody (C-term) (Cat. #AP13387b) immunohistochemistry analysis in formalin fixed and paraffin embedded human rectum tissue followed by peroxidase conjugation of the secondary antibody and DAB staining. This data demonstrates the use of TTC15 Antibody (C-term) for immunohistochemistry. Clinical relevance has not been evaluated.

TTC15 Antibody (C-term) - Background

TTC15 contains 4 TPR repeats.

TTC15 Antibody (C-term) - References

Rose, J. Phd, et al. Mol. Med. (2010) In press :