

**Thioredoxin 2 (Trx2) Antibody (N-term)**  
**Purified Rabbit Polyclonal Antibody (Pab)**  
**Catalog # AP1338A****Specification**

---

**Thioredoxin 2 (Trx2) Antibody (N-term) - Product Information**

Application	WB,E
Primary Accession	<a href="#">Q99757</a>
Reactivity	Human
Host	Rabbit
Clonality	Polyclonal
Isotype	Rabbit IgG
Calculated MW	18383
Antigen Region	2-36

**Thioredoxin 2 (Trx2) Antibody (N-term) - Additional Information****Gene ID** 25828**Other Names**

Thioredoxin, mitochondrial, MTRX, Mt-Trx, Thioredoxin-2, TXN2, TRX2

**Target/Specificity**

This Thioredoxin 2 (Trx2) antibody is generated from rabbits immunized with a KLH conjugated synthetic peptide between 2-36 amino acids from the N-terminal region of human Thioredoxin 2 (Trx2).

**Dilution**

WB~~1:1000

**Format**

Purified polyclonal antibody supplied in PBS with 0.09% (W/V) sodium azide. This antibody is prepared by Saturated Ammonium Sulfate (SAS) precipitation followed by dialysis against PBS.

**Storage**

Maintain refrigerated at 2-8°C for up to 2 weeks. For long term storage store at -20°C in small aliquots to prevent freeze-thaw cycles.

**Precautions**

Thioredoxin 2 (Trx2) Antibody (N-term) is for research use only and not for use in diagnostic or therapeutic procedures.

**Thioredoxin 2 (Trx2) Antibody (N-term) - Protein Information****Name** TXN2**Synonyms** TRX2

**Function** Important for the control of mitochondrial reactive oxygen species homeostasis, apoptosis regulation and cell viability. Possesses a dithiol-reducing activity.

**Cellular Location**

Mitochondrion

**Tissue Location**

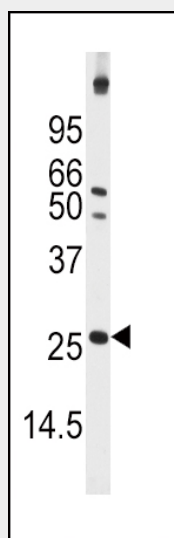
Widely expressed in adult (at protein level) and fetal tissues.

**Thioredoxin 2 (Trx2) Antibody (N-term) - Protocols**

Provided below are standard protocols that you may find useful for product applications.

- [Western Blot](#)
- [Blocking Peptides](#)
- [Dot Blot](#)
- [Immunohistochemistry](#)
- [Immunofluorescence](#)
- [Immunoprecipitation](#)
- [Flow Cytometry](#)
- [Cell Culture](#)

**Thioredoxin 2 (Trx2) Antibody (N-term) - Images**



Western blot analysis of anti-TrX Pab (Cat. #AP1338a) in mouse liver tissue lysate (35ug/lane). Trx2 (arrow) was detected using the purified Pab.

**Thioredoxin 2 (Trx2) Antibody (N-term) - Background**

TRX2 is a mitochondrial member of the thioredoxin family, a group of small multifunctional redox-active proteins. The encoded protein may play important roles in the regulation of the mitochondrial membrane potential and in protection against oxidant-induced apoptosis.

**Thioredoxin 2 (Trx2) Antibody (N-term) - References**

J. Biol. Chem. 277 (36), 33249-33257 (2002)  
J. Biol. Chem. 277 (36), 33242-33248 (2002)