

Thioredoxin 2 (Trx2) Antibody (c-term)
Purified Rabbit Polyclonal Antibody (Pab)
Catalog # AP1338b**Specification**

Thioredoxin 2 (Trx2) Antibody (c-term) - Product Information

Application	WB,E
Primary Accession	Q99757
Other Accession	P97615 , P97493 , Q95108
Reactivity	Human
Predicted	Bovine, Mouse, Rat
Host	Rabbit
Clonality	Polyclonal
Isotype	Rabbit IgG
Calculated MW	18383
Antigen Region	136-166

Thioredoxin 2 (Trx2) Antibody (c-term) - Additional Information**Gene ID** 25828**Other Names**

Thioredoxin, mitochondrial, MTRX, Mt-Trx, Thioredoxin-2, TXN2, TRX2

Target/Specificity

This Thioredoxin 2 (Trx2) antibody is generated from rabbits immunized with a KLH conjugated synthetic peptide between 136-166 amino acids from the C-terminal region of human Thioredoxin 2 (Trx2).

Dilution

WB~~1:1000

E~~Use at an assay dependent concentration.

Format

Purified polyclonal antibody supplied in PBS with 0.09% (W/V) sodium azide. This antibody is prepared by Saturated Ammonium Sulfate (SAS) precipitation followed by dialysis against PBS.

Storage

Maintain refrigerated at 2-8°C for up to 2 weeks. For long term storage store at -20°C in small aliquots to prevent freeze-thaw cycles.

Precautions

Thioredoxin 2 (Trx2) Antibody (c-term) is for research use only and not for use in diagnostic or therapeutic procedures.

Thioredoxin 2 (Trx2) Antibody (c-term) - Protein Information**Name** TXN2

Synonyms TRX2

Function Important for the control of mitochondrial reactive oxygen species homeostasis, apoptosis regulation and cell viability (PubMed:[12032145](#), PubMed:[12080052](#), PubMed:[26626369](#)) Is involved in various redox reactions including the reduction of protein disulfide bonds, through the reversible oxidation of its active center dithiol to a disulfide (By similarity).

Cellular Location

Mitochondrion

Tissue Location

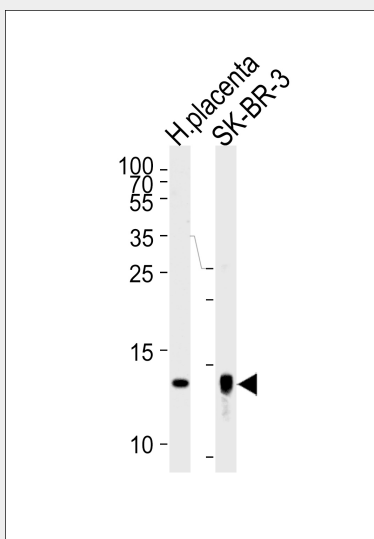
Widely expressed in adult (at protein level) and fetal tissues.

Thioredoxin 2 (Trx2) Antibody (c-term) - Protocols

Provided below are standard protocols that you may find useful for product applications.

- [Western Blot](#)
- [Blocking Peptides](#)
- [Dot Blot](#)
- [Immunohistochemistry](#)
- [Immunofluorescence](#)
- [Immunoprecipitation](#)
- [Flow Cytometry](#)
- [Cell Culture](#)

Thioredoxin 2 (Trx2) Antibody (c-term) - Images



Western blot analysis of lysates from human placenta tissue lysate, SK-BR-3 cell line (from left to right), using Trx2 Antibody (I151)(Cat. #AP1338b). AP1338b was diluted at 1:1000 at each lane. A goat anti-rabbit IgG H&L(HRP) at 1:5000 dilution was used as the secondary antibody. Lysates at 35ug per lane.

Thioredoxin 2 (Trx2) Antibody (c-term) - Background

TRX2 is a mitochondrial member of the thioredoxin family, a group of small multifunctional redox-active proteins. The encoded protein may play important roles in the regulation of the

mitochondrial membrane potential and in protection against oxidant-induced apoptosis.

Thioredoxin 2 (Trx2) Antibody (c-term) - References

J. Biol. Chem. 277 (36), 33249-33257 (2002)

J. Biol. Chem. 277 (36), 33242-33248 (2002)