

TGFBRAP1 Antibody (C-term)
Affinity Purified Rabbit Polyclonal Antibody (Pab)
Catalog # AP13395b**Specification**

TGFBRAP1 Antibody (C-term) - Product Information

Application	IHC-P, WB,E
Primary Accession	Q8WUH2
Other Accession	NP_004248.2 , NP_001136093.1
Reactivity	Human
Host	Rabbit
Clonality	Polyclonal
Isotype	Rabbit IgG
Calculated MW	97158
Antigen Region	499-528

TGFBRAP1 Antibody (C-term) - Additional Information**Gene ID** 9392**Other Names**

Transforming growth factor-beta receptor-associated protein 1, TGF-beta receptor-associated protein 1, TRAP-1, TRAP1, TGFBRAP1

Target/Specificity

This TGFBRAP1 antibody is generated from rabbits immunized with a KLH conjugated synthetic peptide between 499-528 amino acids from the C-terminal region of human TGFBRAP1.

Dilution

IHC-P~~1:10~50

WB~~1:1000

E~~Use at an assay dependent concentration.

Format

Purified polyclonal antibody supplied in PBS with 0.09% (W/V) sodium azide. This antibody is purified through a protein A column, followed by peptide affinity purification.

Storage

Maintain refrigerated at 2-8°C for up to 2 weeks. For long term storage store at -20°C in small aliquots to prevent freeze-thaw cycles.

Precautions

TGFBRAP1 Antibody (C-term) is for research use only and not for use in diagnostic or therapeutic procedures.

TGFBRAP1 Antibody (C-term) - Protein Information**Name** TGFBRAP1

Function Plays a role in the TGF-beta/activin signaling pathway. It associates with inactive heteromeric TGF-beta and activin receptor complexes, mainly through the type II receptor, and is released upon activation of signaling. May recruit SMAD4 to the vicinity of the receptor complex and facilitate its interaction with receptor-regulated Smads, such as SMAD2.

Cellular Location

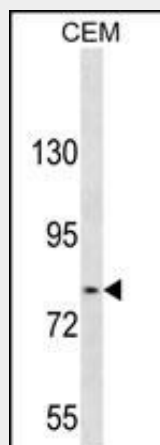
Cytoplasm. Early endosome. Note=Colocalizes with TGF-beta receptors in the absence of signaling

TGFBRAP1 Antibody (C-term) - Protocols

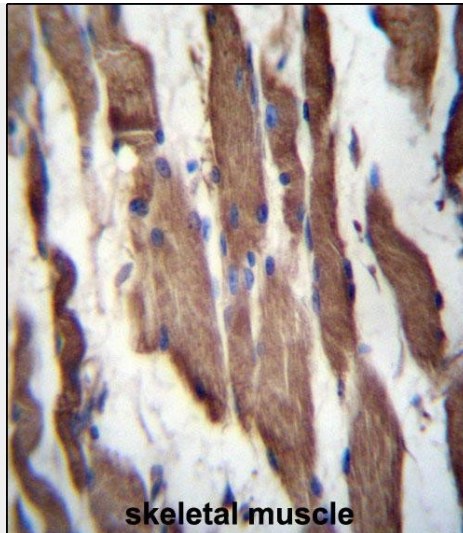
Provided below are standard protocols that you may find useful for product applications.

- [Western Blot](#)
- [Blocking Peptides](#)
- [Dot Blot](#)
- [Immunohistochemistry](#)
- [Immunofluorescence](#)
- [Immunoprecipitation](#)
- [Flow Cytometry](#)
- [Cell Culture](#)

TGFBRAP1 Antibody (C-term) - Images



TGFBRAP1 Antibody (C-term) (Cat. #AP13395b) western blot analysis in CEM cell line lysates (35ug/lane). This demonstrates the TGFBRAP1 antibody detected the TGFBRAP1 protein (arrow).



TGFBRAP1 Antibody (C-term) (Cat. #AP13395b) immunohistochemistry analysis in formalin fixed and paraffin embedded human skeletal muscle followed by peroxidase conjugation of the secondary antibody and DAB staining. This data demonstrates the use of TGFBRAP1 Antibody (C-term) for immunohistochemistry. Clinical relevance has not been evaluated.

TGFBRAP1 Antibody (C-term) - Background

TGFBRAP1 plays a role in the TGF-beta/activin signaling pathway. It associates with inactive heteromeric TGF-beta and activin receptor complexes, mainly through the type II receptor, and is released upon activation of signaling. May recruit SMAD4 to the vicinity of the receptor complex and facilitate its interaction with receptor-regulated Smads, such as SMAD2.

TGFBRAP1 Antibody (C-term) - References

Rose, J. Phd, et al. Mol. Med. (2010) In press :
Le Clerc, S., et al. J. Infect. Dis. 200(8):1194-1201(2009)
Hwang, Y., et al. Pharmacogenomics 7(5):697-709(2006)
Wurthner, J.U., et al. J. Biol. Chem. 276(22):19495-19502(2001)
Provost, P., et al. Proc. Natl. Acad. Sci. U.S.A. 96(5):1881-1885(1999)