

**CTGF Antibody (Center)**  
**Affinity Purified Rabbit Polyclonal Antibody (Pab)**  
**Catalog # AP13399C****Specification**

---

**CTGF Antibody (Center) - Product Information**

Application	WB, IHC-P,E
Primary Accession	<a href="#">P29279</a>
Other Accession	<a href="#">O9R1E9</a> , <a href="#">O19113</a> , <a href="#">P29268</a> , <a href="#">NP_001892.1</a>
Reactivity	Human
Predicted	Mouse, Pig, Rat
Host	Rabbit
Clonality	Polyclonal
Isotype	Rabbit IgG
Calculated MW	38091
Antigen Region	166-193

**CTGF Antibody (Center) - Additional Information****Gene ID** 1490**Other Names**

Connective tissue growth factor, CCN family member 2, Hypertrophic chondrocyte-specific protein 24, Insulin-like growth factor-binding protein 8, IBP-8, IGF-binding protein 8, IGFBP-8, CTGF, CCN2, HCS24, IGFBP8

**Target/Specificity**

This CTGF antibody is generated from rabbits immunized with a KLH conjugated synthetic peptide between 166-193 amino acids from the Central region of human CTGF.

**Dilution**

WB~~1:1000

IHC-P~~1:10~50

E~~Use at an assay dependent concentration.

**Format**

Purified polyclonal antibody supplied in PBS with 0.09% (W/V) sodium azide. This antibody is purified through a protein A column, followed by peptide affinity purification.

**Storage**

Maintain refrigerated at 2-8°C for up to 2 weeks. For long term storage store at -20°C in small aliquots to prevent freeze-thaw cycles.

**Precautions**

CTGF Antibody (Center) is for research use only and not for use in diagnostic or therapeutic procedures.

**CTGF Antibody (Center) - Protein Information**

**Name** CCN2 ([HGNC:2500](#))

**Function** Major connective tissue chemoattractant secreted by vascular endothelial cells. Promotes proliferation and differentiation of chondrocytes. Is involved in the stimulation of osteoblast differentiation and has a critical role in osteogenesis (PubMed:[39414788](#)). Mediates heparin- and divalent cation-dependent cell adhesion in many cell types including fibroblasts, myofibroblasts, endothelial and epithelial cells. Enhances fibroblast growth factor- induced DNA synthesis.

**Cellular Location**

Secreted, extracellular space, extracellular matrix {ECO:0000250|UniProtKB:P29268}. Secreted

**Tissue Location**

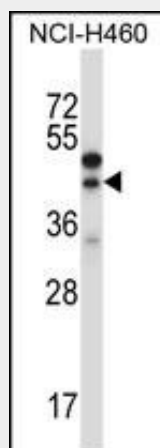
Expressed in bone marrow and thymic cells. Also expressed one of two Wilms tumors tested.

### CTGF Antibody (Center) - Protocols

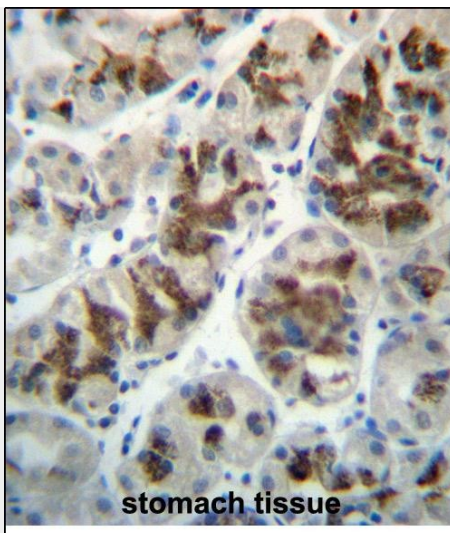
Provided below are standard protocols that you may find useful for product applications.

- [Western Blot](#)
- [Blocking Peptides](#)
- [Dot Blot](#)
- [Immunohistochemistry](#)
- [Immunofluorescence](#)
- [Immunoprecipitation](#)
- [Flow Cytometry](#)
- [Cell Culture](#)

### CTGF Antibody (Center) - Images



CTGF Antibody (Center) (Cat. #AP13399c) western blot analysis in NCI-H460 cell line lysates (35ug/lane). This demonstrates the CTGF antibody detected the CTGF protein (arrow).



CTGF Antibody (Center) (Cat. #AP13399c) immunohistochemistry analysis in formalin fixed and paraffin embedded human stomach tissue followed by peroxidase conjugation of the secondary antibody and DAB staining. This data demonstrates the use of CTGF Antibody (Center) for immunohistochemistry. Clinical relevance has not been evaluated.

#### **CTGF Antibody (Center) - Background**

The protein encoded by this gene is a mitogen that is secreted by vascular endothelial cells. The encoded protein plays a role in chondrocyte proliferation and differentiation, cell adhesion in many cell types, and is related to platelet-derived growth factor. Certain polymorphisms in this gene have been linked with a higher incidence of systemic sclerosis. [provided by RefSeq].

#### **CTGF Antibody (Center) - References**

Behrens, M.E., et al. *Oncogene* 29(42):5667-5677(2010)  
Cunningham, J.L., et al. *Eur. J. Endocrinol.* 163(4):691-697(2010)  
Ito, Y., et al. *Am. J. Physiol. Renal Physiol.* 299 (3), F545-F558 (2010) :  
Adler, S.G., et al. *Clin J Am Soc Nephrol* 5(8):1420-1428(2010)  
Johnatty, S.E., et al. *PLoS Genet.* 6 (7), E1001016 (2010) :