

RPL3 Antibody (Center)
Affinity Purified Rabbit Polyclonal Antibody (Pab)
Catalog # AP13400c**Specification**

RPL3 Antibody (Center) - Product Information

Application	IHC-P, WB,E
Primary Accession	P39023
Other Accession	P14126 , P21531 , Q29293 , P27659 , Q4R5Q0 , P39872 , NP_000958.1 , G1TL06
Reactivity	Human
Predicted	Bovine, Monkey, Mouse, Pig, Rabbit, Rat, Yeast
Host	Rabbit
Clonality	Polyclonal
Isotype	Rabbit IgG
Calculated MW	46109
Antigen Region	224-251

RPL3 Antibody (Center) - Additional Information**Gene ID** 6122**Other Names**

60S ribosomal protein L3, HIV-1 TAR RNA-binding protein B, TARBP-B, RPL3

Target/Specificity

This RPL3 antibody is generated from rabbits immunized with a KLH conjugated synthetic peptide between 224-251 amino acids from the Central region of human RPL3.

Dilution

IHC-P~~1:10~50

WB~~1:1000

E~~Use at an assay dependent concentration.

Format

Purified polyclonal antibody supplied in PBS with 0.09% (W/V) sodium azide. This antibody is purified through a protein A column, followed by peptide affinity purification.

Storage

Maintain refrigerated at 2-8°C for up to 2 weeks. For long term storage store at -20°C in small aliquots to prevent freeze-thaw cycles.

Precautions

RPL3 Antibody (Center) is for research use only and not for use in diagnostic or therapeutic procedures.

RPL3 Antibody (Center) - Protein Information

Name RPL3

Function Component of the large ribosomal subunit (PubMed:[12962325](#), PubMed:[23636399](#), PubMed:[32669547](#), PubMed:[35674491](#)). The ribosome is a large ribonucleoprotein complex responsible for the synthesis of proteins in the cell (PubMed:[12962325](#), PubMed:[23636399](#), PubMed:[32669547](#)).

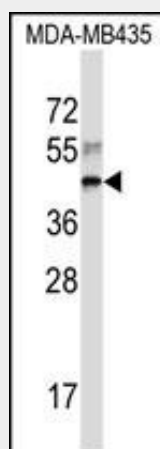
Cellular Location

Nucleus, nucleolus. Cytoplasm

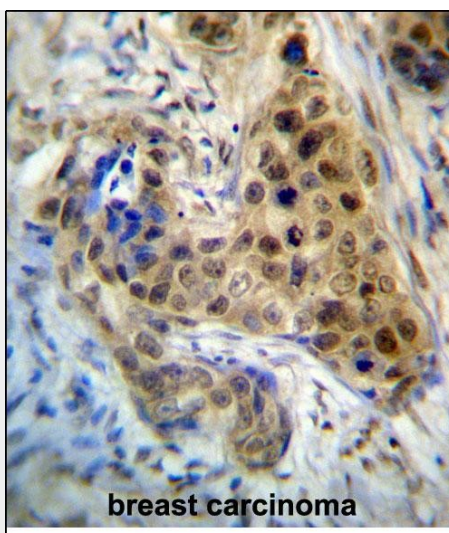
RPL3 Antibody (Center) - Protocols

Provided below are standard protocols that you may find useful for product applications.

- [Western Blot](#)
- [Blocking Peptides](#)
- [Dot Blot](#)
- [Immunohistochemistry](#)
- [Immunofluorescence](#)
- [Immunoprecipitation](#)
- [Flow Cytometry](#)
- [Cell Culture](#)

RPL3 Antibody (Center) - Images

RPL3 Antibody (Center) (Cat. #AP13400c) western blot analysis in MDA-MB435 cell line lysates (35ug/lane). This demonstrates the RPL3 antibody detected the RPL3 protein (arrow).



RPL3 Antibody (Center) (Cat. #AP13400c) immunohistochemistry analysis in formalin fixed and paraffin embedded human breast carcinoma followed by peroxidase conjugation of the secondary antibody and DAB staining. This data demonstrates the use of RPL3 Antibody (Center) for immunohistochemistry. Clinical relevance has not been evaluated.

RPL3 Antibody (Center) - Background

Ribosomes, the complexes that catalyze protein synthesis, consist of a small 40S subunit and a large 60S subunit. Together these subunits are composed of 4 RNA species and approximately 80 structurally distinct proteins. This gene encodes a ribosomal protein that is a component of the 60S subunit. The protein belongs to the L3P family of ribosomal proteins and it is located in the cytoplasm. The protein can bind to the HIV-1 TAR mRNA, and it has been suggested that the protein contributes to tat-mediated transactivation. This gene is co-transcribed with several small nucleolar RNA genes, which are located in several of this gene's introns. Alternate transcriptional splice variants, encoding different isoforms, have been characterized. As is typical for genes encoding ribosomal proteins, there are multiple processed pseudogenes of this gene dispersed through the genome. [provided by RefSeq].

RPL3 Antibody (Center) - References

Russo, A., et al. Biochim. Biophys. Acta 1799 (5-6), 419-428 (2010) :
Rikova, K., et al. Cell 131(6):1190-1203(2007)
Tu, L.C., et al. Mol. Cell Proteomics 6(4):575-588(2007)
Ewing, R.M., et al. Mol. Syst. Biol. 3, 89 (2007) :
Bergqvist, M., et al. Dis. Esophagus 19(1):20-23(2006)