

USP45 Antibody (Center)
Affinity Purified Rabbit Polyclonal Antibody (Pab)
Catalog # AP13409c

Specification

USP45 Antibody (Center) - Product Information

Application	IHC-P, WB,E
Primary Accession	Q70EL2
Other Accession	Q8K387 , NP_001073950.1
Reactivity	Human, Mouse
Host	Rabbit
Clonality	Polyclonal
Isotype	Rabbit IgG
Antigen Region	309-338

USP45 Antibody (Center) - Additional Information

Gene ID 85015

Other Names

Ubiquitin carboxyl-terminal hydrolase 45, Deubiquitinating enzyme 45, Ubiquitin thioesterase 45, Ubiquitin-specific-processing protease 45, USP45

Target/Specificity

This USP45 antibody is generated from rabbits immunized with a KLH conjugated synthetic peptide between 309-338 amino acids from the Central region of human USP45.

Dilution

IHC-P~~1:10~50

WB~~1:2000

E~~Use at an assay dependent concentration.

Format

Purified polyclonal antibody supplied in PBS with 0.09% (W/V) sodium azide. This antibody is purified through a protein A column, followed by peptide affinity purification.

Storage

Maintain refrigerated at 2-8°C for up to 2 weeks. For long term storage store at -20°C in small aliquots to prevent freeze-thaw cycles.

Precautions

USP45 Antibody (Center) is for research use only and not for use in diagnostic or therapeutic procedures.

USP45 Antibody (Center) - Protein Information

Name USP45

Function Catalyzes the deubiquitination of SPDL1 (PubMed:[30258100](#)). Plays a role in the repair of UV-induced DNA damage via deubiquitination of ERCC1, promoting its recruitment to DNA damage sites (PubMed:[25538220](#)). May be involved in the maintenance of photoreceptor function (PubMed:[30573563](#)). May play a role in normal retinal development (By similarity). Plays a role in cell migration (PubMed:[30258100](#)).

Cellular Location

Photoreceptor inner segment. Cytoplasm Nucleus

Tissue Location

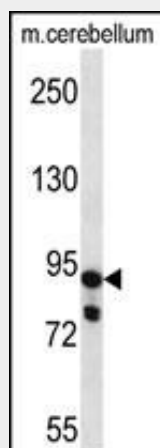
Widely expressed. High expression is detected in the cerebellum. In the eye, it is expressed at high levels in the optic nerve, sclera and retina, with relatively low levels in the choroid, lens and retinal pigment epithelium (PubMed:[30573563](#))

USP45 Antibody (Center) - Protocols

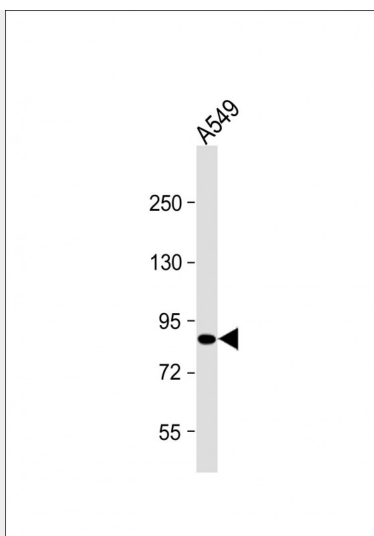
Provided below are standard protocols that you may find useful for product applications.

- [Western Blot](#)
- [Blocking Peptides](#)
- [Dot Blot](#)
- [Immunohistochemistry](#)
- [Immunofluorescence](#)
- [Immunoprecipitation](#)
- [Flow Cytometry](#)
- [Cell Culture](#)

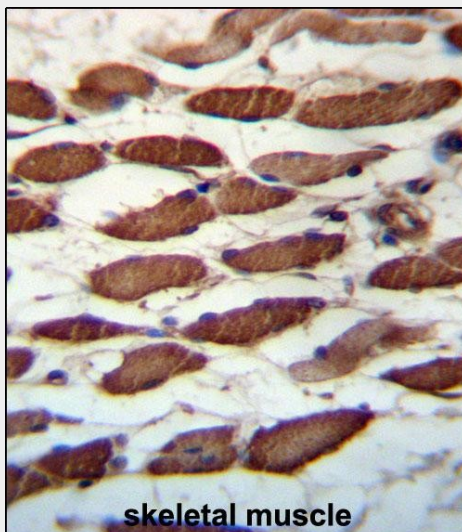
USP45 Antibody (Center) - Images



USP45 Antibody (Center) (Cat. #AP13409c) western blot analysis in mouse cerebellum tissue lysates (35ug/lane). This demonstrates the USP45 antibody detected the USP45 protein (arrow).



Anti-USP45 Antibody (Center) at 1:2000 dilution + A549 whole cell lysate Lysates/proteins at 20 μ g per lane. Secondary Goat Anti-Rabbit IgG, (H+L), Peroxidase conjugated at 1/10000 dilution. Predicted band size : 92 kDa Blocking/Dilution buffer: 5% NFDM/TBST.



USP45 Antibody (Center) (Cat. #AP13409c) immunohistochemistry analysis in formalin fixed and paraffin embedded human skeletal muscle followed by peroxidase conjugation of the secondary antibody and DAB staining. This data demonstrates the use of USP45 Antibody (Center) for immunohistochemistry. Clinical relevance has not been evaluated.

USP45 Antibody (Center) - Background

The function of this protein remains unknown.

USP45 Antibody (Center) - References

- Quesada, V., et al. Biochem. Biophys. Res. Commun. 314(1):54-62(2004)
- Mungall, A.J., et al. Nature 425(6960):805-811(2003)
- Puente, X.S., et al. Nat. Rev. Genet. 4(7):544-558(2003)