

CD1C Antibody (C-term)
Affinity Purified Rabbit Polyclonal Antibody (Pab)
Catalog # AP13430b**Specification**

CD1C Antibody (C-term) - Product Information

| | |
|-------------------|-----------------------------|
| Application | WB,E |
| Primary Accession | P29017 |
| Other Accession | NP_001756.2 |
| Reactivity | Human |
| Host | Rabbit |
| Clonality | Polyclonal |
| Isotype | Rabbit IgG |
| Calculated MW | 37654 |
| Antigen Region | 226-253 |

CD1C Antibody (C-term) - Additional Information**Gene ID** 911**Other Names**

T-cell surface glycoprotein CD1c, CD1c, CD1C

Target/Specificity

This CD1C antibody is generated from rabbits immunized with a KLH conjugated synthetic peptide between 226-253 amino acids from the C-terminal region of human CD1C.

Dilution

WB~~1:1000

E~~Use at an assay dependent concentration.

Format

Purified polyclonal antibody supplied in PBS with 0.09% (W/V) sodium azide. This antibody is purified through a protein A column, followed by peptide affinity purification.

Storage

Maintain refrigerated at 2-8°C for up to 2 weeks. For long term storage store at -20°C in small aliquots to prevent freeze-thaw cycles.

Precautions

CD1C Antibody (C-term) is for research use only and not for use in diagnostic or therapeutic procedures.

CD1C Antibody (C-term) - Protein Information**Name** CD1C**Function** Antigen-presenting protein that binds self and non-self lipid and glycolipid antigens and

presents them to T-cell receptors on natural killer T-cells.

Cellular Location

Cell membrane; Single-pass type I membrane protein. Endosome membrane; Single-pass type I membrane protein Lysosome. Note=Subject to intracellular trafficking between the cell membrane and endosomes

Tissue Location

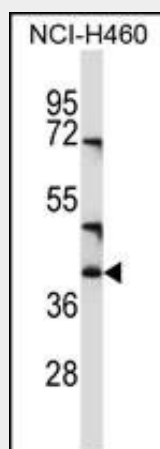
Expressed on cortical thymocytes, on certain T-cell leukemias, and in various other tissues

CD1C Antibody (C-term) - Protocols

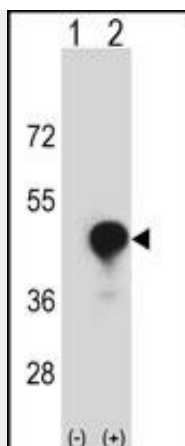
Provided below are standard protocols that you may find useful for product applications.

- [Western Blot](#)
- [Blocking Peptides](#)
- [Dot Blot](#)
- [Immunohistochemistry](#)
- [Immunofluorescence](#)
- [Immunoprecipitation](#)
- [Flow Cytometry](#)
- [Cell Culture](#)

CD1C Antibody (C-term) - Images



CD1C Antibody (C-term) (Cat. #AP13430b) western blot analysis in NCI-H460 cell line lysates (35ug/lane). This demonstrates the CD1C antibody detected the CD1C protein (arrow).



Western blot analysis of CD1C (arrow) using rabbit polyclonal CD1C Antibody (C-term) (Cat. #AP13430b). 293 cell lysates (2 ug/lane) either nontransfected (Lane 1) or transiently transfected (Lane 2) with the CD1C gene.

CD1C Antibody (C-term) - Background

This gene encodes a member of the CD1 family of transmembrane glycoproteins, which are structurally related to the major histocompatibility complex (MHC) proteins and form heterodimers with beta-2-microglobulin. The CD1 proteins mediate the presentation of primarily lipid and glycolipid antigens of self or microbial origin to T cells. The human genome contains five CD1 family genes organized in a cluster on chromosome 1. The CD1 family members are thought to differ in their cellular localization and specificity for particular lipid ligands. The protein encoded by this gene is broadly distributed throughout the endocytic system via a tyrosine-based motif in the cytoplasmic tail. Alternatively spliced transcript variants of this gene have been observed, but their full-length nature is not known.

CD1C Antibody (C-term) - References

Van Brussel, I., et al. J. Immunol. Methods 362 (1-2), 168-175 (2010) :
Davila, S., et al. Genes Immun. 11(3):232-238(2010)
Garzon, D., et al. Mol. Immunol. 47 (2-3), 253-260 (2009) :
Van Rhijn, I., et al. J. Exp. Med. 206(6):1409-1422(2009)
Kaser, A., et al. Eur. J. Immunol. 38(8):2351-2359(2008)