

ARMC9 Antibody (N-term)
Affinity Purified Rabbit Polyclonal Antibody (Pab)
Catalog # AP13443a

Specification

ARMC9 Antibody (N-term) - Product Information

Application	IHC-P, WB,E
Primary Accession	Q7Z3E5
Other Accession	NP_079415.3
Reactivity	Human
Host	Rabbit
Clonality	Polyclonal
Isotype	Rabbit IgG
Calculated MW	91819
Antigen Region	95-124

ARMC9 Antibody (N-term) - Additional Information

Gene ID 80210

Other Names

LisH domain-containing protein ARMC9, Melanoma/melanocyte-specific tumor antigen KU-MEL-1, NS21, ARMC9, KIAA1868

Target/Specificity

This ARMC9 antibody is generated from rabbits immunized with a KLH conjugated synthetic peptide between 95-124 amino acids from the N-terminal region of human ARMC9.

Dilution

IHC-P~~1:10~50

WB~~1:1000

E~~Use at an assay dependent concentration.

Format

Purified polyclonal antibody supplied in PBS with 0.09% (W/V) sodium azide. This antibody is purified through a protein A column, followed by peptide affinity purification.

Storage

Maintain refrigerated at 2-8°C for up to 2 weeks. For long term storage store at -20°C in small aliquots to prevent freeze-thaw cycles.

Precautions

ARMC9 Antibody (N-term) is for research use only and not for use in diagnostic or therapeutic procedures.

ARMC9 Antibody (N-term) - Protein Information

Name ARMC9 ([HGNC:20730](#))

Synonyms KIAA1868

Function Involved in ciliogenesis (PubMed:[32453716](#)). It is required for appropriate acetylation and polyglutamylation of ciliary microtubules, and regulation of cilium length (PubMed:[32453716](#)). Acts as a positive regulator of hedgehog (Hh) signaling (By similarity). May participate in the trafficking and/or retention of GLI2 and GLI3 proteins at the ciliary tip (By similarity).

Cellular Location

Cytoplasm, cytoskeleton, cilium basal body. Cell projection, cilium {ECO:0000250|UniProtKB:Q9D2I5}. Cytoplasm, cytoskeleton, microtubule organizing center, centrosome, centriole Note=Localized to the proximal region in cilia. Stimulation of Hh signaling leads to redistribution of ARMC9 toward the ciliary tip within 6 hours, follow by a gradual return to its original proximal location (By similarity). Localizes to the daughter centriole of the primary cilium in RPE1 cells (PubMed:28625504) {ECO:0000250|UniProtKB:Q9D2I5, ECO:0000269|PubMed:28625504}

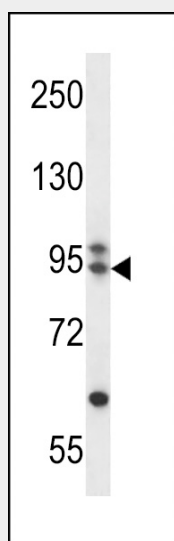
Tissue Location

Strongly expressed in most melanomas and melanocytes. Weakly expressed in the testis

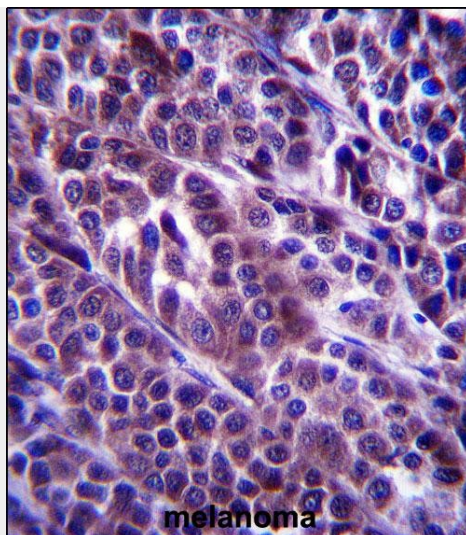
ARMC9 Antibody (N-term) - Protocols

Provided below are standard protocols that you may find useful for product applications.

- [Western Blot](#)
- [Blocking Peptides](#)
- [Dot Blot](#)
- [Immunohistochemistry](#)
- [Immunofluorescence](#)
- [Immunoprecipitation](#)
- [Flow Cytometry](#)
- [Cell Culture](#)

ARMC9 Antibody (N-term) - Images

ARMC9 Antibody (N-term) (Cat. #AP13443a) western blot analysis in CEM cell line lysates (35ug/lane). This demonstrates the ARMC9 antibody detected the ARMC9 protein (arrow).



ARMC9 Antibody (N-term) (Cat. #AP13443a) immunohistochemistry analysis in formalin fixed and paraffin embedded human melanoma followed by peroxidase conjugation of the secondary antibody and DAB staining. This data demonstrates the use of ARMC9 Antibody (N-term) for immunohistochemistry. Clinical relevance has not been evaluated.

ARMC9 Antibody (N-term) - Background

The specific function of the protein remains unknown.

ARMC9 Antibody (N-term) - References

Bailey, S.D., et al. Diabetes Care (2010) In press :
Rose, J.E., et al. Mol. Med. 16 (7-8), 247-253 (2010) :
Talmud, P.J., et al. Am. J. Hum. Genet. 85(5):628-642(2009)
Hillier, L.W., et al. Nature 434(7034):724-731(2005)
Kiniwa, Y., et al. Cancer Res. 61(21):7900-7907(2001)