

MAGED4B Antibody (Center)
Affinity Purified Rabbit Polyclonal Antibody (Pab)
Catalog # AP13447c**Specification**

MAGED4B Antibody (Center) - Product Information

Application	IHC-P, WB,E
Primary Accession	O96JG8
Other Accession	A6QLI5 , NP_803881.1 , NP_803879.1 , NP_001092270.1 , NP_110428.2
Reactivity	Human
Predicted	Bovine
Host	Rabbit
Clonality	Polyclonal
Isotype	Rabbit IgG
Calculated MW	81378
Antigen Region	328-357

MAGED4B Antibody (Center) - Additional Information**Gene ID** 728239;81557**Other Names**

Melanoma-associated antigen D4, MAGE-D4 antigen, MAGE-E1 antigen, MAGED4, KIAA1859, MAGED4A, MAGEE1

Target/Specificity

This MAGED4B antibody is generated from rabbits immunized with a KLH conjugated synthetic peptide between 328-357 amino acids from the Central region of human MAGED4B.

Dilution

IHC-P~~1:10~50

WB~~1:1000

E~~Use at an assay dependent concentration.

Format

Purified polyclonal antibody supplied in PBS with 0.09% (W/V) sodium azide. This antibody is purified through a protein A column, followed by peptide affinity purification.

Storage

Maintain refrigerated at 2-8°C for up to 2 weeks. For long term storage store at -20°C in small aliquots to prevent freeze-thaw cycles.

Precautions

MAGED4B Antibody (Center) is for research use only and not for use in diagnostic or therapeutic procedures.

MAGED4B Antibody (Center) - Protein Information

Name MAGED4

Synonyms KIAA1859, MAGED4A, MAGEE1

Function May enhance ubiquitin ligase activity of RING-type zinc finger-containing E3 ubiquitin-protein ligases. Proposed to act through recruitment and/or stabilization of the Ubl-conjugating enzyme (E2) at the E3:substrate complex.

Tissue Location

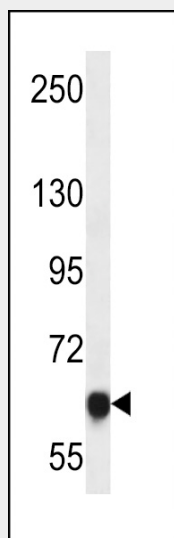
Expressed only in brain and ovary among normal tissues. Isoform 1 and isoform 2 are specifically expressed in glioma cells among cancer cells. Detected in some renal cell carcinoma samples.

MAGED4B Antibody (Center) - Protocols

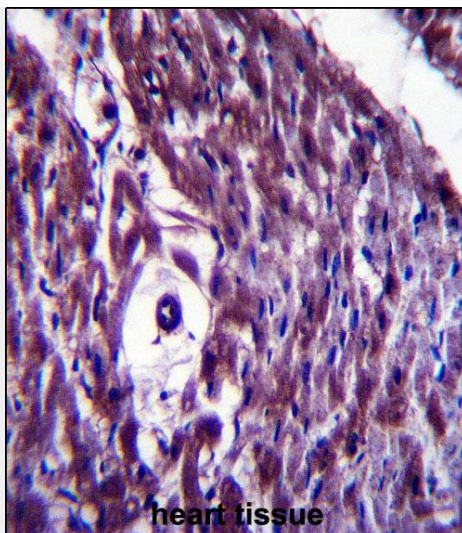
Provided below are standard protocols that you may find useful for product applications.

- [Western Blot](#)
- [Blocking Peptides](#)
- [Dot Blot](#)
- [Immunohistochemistry](#)
- [Immunofluorescence](#)
- [Immunoprecipitation](#)
- [Flow Cytometry](#)
- [Cell Culture](#)

MAGED4B Antibody (Center) - Images



MAGED4B Antibody (Center) (Cat. #AP13447c) western blot analysis in HepG2 cell line lysates (35ug/lane). This demonstrates the MAGED4B antibody detected the MAGED4B protein (arrow).



heart tissue

MAGED4B Antibody (Center) (Cat. #AP13447c) immunohistochemistry analysis in formalin fixed and paraffin embedded human heart tissue followed by peroxidase conjugation of the secondary antibody and DAB staining. This data demonstrates the use of MAGED4B Antibody (Center) for immunohistochemistry. Clinical relevance has not been evaluated.

MAGED4B Antibody (Center) - Background

This gene is a member of the MAGED gene family. It is expressed only in brain and ovary among normal tissues, and two transcript variants of this gene are specifically expressed in glioma cells among cancer cells. This gene and the other MAGED genes are clustered on chromosome Xp11. Multiple alternatively spliced transcript variants have been found for this gene, however, the full-length nature of some variants has not been defined.

MAGED4B Antibody (Center) - References

Ito, S., et al. Lung Cancer 51(1):79-88(2006)
Kawano, Y., et al. Gene 277 (1-2), 129-137 (2001) :
Sasaki, M., et al. Cancer Res. 61(12):4809-4814(2001)