

NRK Antibody (Center)
Affinity Purified Rabbit Polyclonal Antibody (Pab)
Catalog # AP13448c**Specification**

NRK Antibody (Center) - Product Information

Application	IF, WB,E
Primary Accession	Q7Z2Y5
Other Accession	NP_940867.2
Reactivity	Human
Host	Rabbit
Clonality	Polyclonal
Isotype	Rabbit IgG
Calculated MW	178479
Antigen Region	721-750

NRK Antibody (Center) - Additional Information**Gene ID** 203447**Other Names**

Nik-related protein kinase, NRK

Target/Specificity

This NRK antibody is generated from rabbits immunized with a KLH conjugated synthetic peptide between 721-750 amino acids from the Central region of human NRK.

Dilution

IF~~1:10~50

WB~~1:1000

E~~Use at an assay dependent concentration.

Format

Purified polyclonal antibody supplied in PBS with 0.09% (W/V) sodium azide. This antibody is purified through a protein A column, followed by peptide affinity purification.

Storage

Maintain refrigerated at 2-8°C for up to 2 weeks. For long term storage store at -20°C in small aliquots to prevent freeze-thaw cycles.

Precautions

NRK Antibody (Center) is for research use only and not for use in diagnostic or therapeutic procedures.

NRK Antibody (Center) - Protein Information**Name** NRK

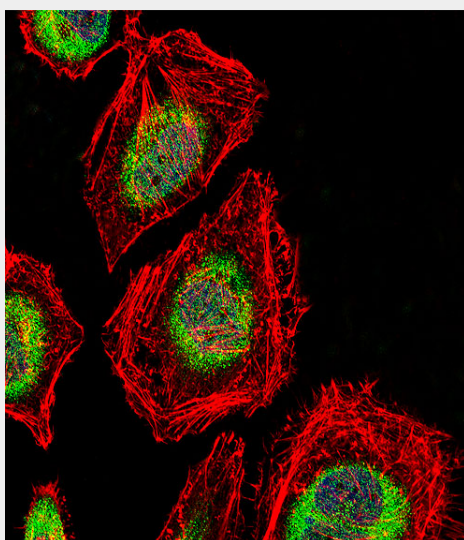
Function May phosphorylate cofilin-1 and induce actin polymerization through this process, during the late stages of embryogenesis. Involved in the TNF-alpha-induced signaling pathway (By similarity).

NRK Antibody (Center) - Protocols

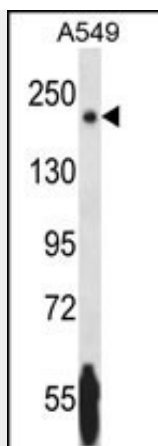
Provided below are standard protocols that you may find useful for product applications.

- [Western Blot](#)
- [Blocking Peptides](#)
- [Dot Blot](#)
- [Immunohistochemistry](#)
- [Immunofluorescence](#)
- [Immunoprecipitation](#)
- [Flow Cytometry](#)
- [Cell Culture](#)

NRK Antibody (Center) - Images



Fluorescent confocal image of HeLa cell stained with NRK Antibody (Center)(Cat#AP13448c). HeLa cells were fixed with 4% PFA (20 min), permeabilized with Triton X-100 (0.1%, 10 min), then incubated with NRK primary antibody (1:25, 1 h at 37°C). For secondary antibody, Alexa Fluor® 488 conjugated donkey anti-rabbit antibody (green) was used (1:400, 50 min at 37°C). Cytoplasmic actin was counterstained with Alexa Fluor® 555 (red) conjugated Phalloidin (7 units/ml, 1 h at 37°C). Nuclei were counterstained with DAPI (blue) (10 µg/ml, 10 min). NRK immunoreactivity is localized to Cytoplasm and Nucleus significantly.



NRK Antibody (Center) (Cat. #AP13448c) western blot analysis in A549 cell line lysates (35ug/lane). This demonstrates the NRK antibody detected the NRK protein (arrow).

NRK Antibody (Center) - Background

The mouse ortholog of this gene encodes a protein kinase required for JNK activation. The encoded protein may be involved in the induction of actin polymerization in late embryogenesis.

NRK Antibody (Center) - References

Ross, M.T., et al. Nature 434(7031):325-337(2005)
Nakano, K., et al. Exp. Cell Res. 287(2):219-227(2003)