

SFRS2B Antibody (N-term)
Affinity Purified Rabbit Polyclonal Antibody (Pab)
Catalog # AP13474a

Specification

SFRS2B Antibody (N-term) - Product Information

Application	WB,E
Primary Accession	O9BRL6
Other Accession	NP_115285.1
Reactivity	Human, Mouse
Host	Rabbit
Clonality	Polyclonal
Isotype	Rabbit IgG
Calculated MW	32288
Antigen Region	45-73

SFRS2B Antibody (N-term) - Additional Information

Gene ID 10929

Other Names

Serine/arginine-rich splicing factor 8, Pre-mRNA-splicing factor SRP46, Splicing factor SRp46, Splicing factor, arginine/serine-rich 2B, SRSF8, SFRS2B, SRP46

Target/Specificity

This SFRS2B antibody is generated from rabbits immunized with a KLH conjugated synthetic peptide between 45-73 amino acids from the N-terminal region of human SFRS2B.

Dilution

WB~~1:1000

E~~Use at an assay dependent concentration.

Format

Purified polyclonal antibody supplied in PBS with 0.09% (W/V) sodium azide. This antibody is purified through a protein A column, followed by peptide affinity purification.

Storage

Maintain refrigerated at 2-8°C for up to 2 weeks. For long term storage store at -20°C in small aliquots to prevent freeze-thaw cycles.

Precautions

SFRS2B Antibody (N-term) is for research use only and not for use in diagnostic or therapeutic procedures.

SFRS2B Antibody (N-term) - Protein Information

Name SRSF8

Synonyms SFRS2B, SRP46

Function Involved in pre-mRNA alternative splicing.

Cellular Location
Nucleus.

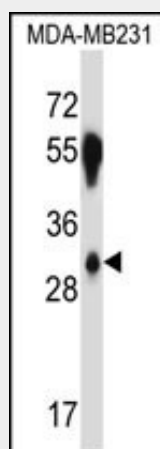
Tissue Location
Strongly expressed in pancreas, spleen and prostate. Weakly expressed in lung, liver and thymus

SFRS2B Antibody (N-term) - Protocols

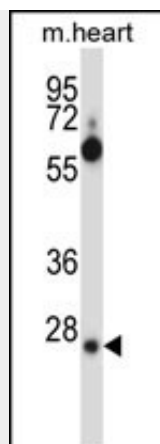
Provided below are standard protocols that you may find useful for product applications.

- [Western Blot](#)
- [Blocking Peptides](#)
- [Dot Blot](#)
- [Immunohistochemistry](#)
- [Immunofluorescence](#)
- [Immunoprecipitation](#)
- [Flow Cytometry](#)
- [Cell Culture](#)

SFRS2B Antibody (N-term) - Images



SFRS2B Antibody (N-term) (Cat. #AP13474a) western blot analysis in MDA-MB231 cell line lysates (35ug/lane). This demonstrates the SFRS2B antibody detected the SFRS2B protein (arrow).



SFRS2B Antibody (N-term) (Cat. #AP13474a) western blot analysis in mouse heart tissue lysates (35ug/lane). This demonstrates the SFRS2B antibody detected the SFRS2B protein (arrow).

SFRS2B Antibody (N-term) - Background

The SR (serine/arginine-rich) family contains a number of phosphoproteins that function as essential and alternative splicing factors. The SR family of proteins is characterized by the presence of a ribonucleoprotein (RNP)-type RNA binding motif and a carboxyl-terminal arginine-serine-rich (RS) domain. The protein encoded by this gene is a member of the SR family and functions as an essential splicing factor in vitro. This gene is thought to be an expressed PR264/SC35 retropseudogene.

SFRS2B Antibody (N-term) - References

Manley, J.L., et al. Genes Dev. 24(11):1073-1074(2010)
Lareau, L.F., et al. Nature 446(7138):926-929(2007)
Olsen, J.V., et al. Cell 127(3):635-648(2006)
Li, J., et al. Mol. Cell. Biol. 23(21):7437-7447(2003)
Grottke, C., et al. Int. J. Cancer 88(4):535-546(2000)