

RNASE6 Antibody (C-term)
Affinity Purified Rabbit Polyclonal Antibody (Pab)
Catalog # AP13484B**Specification**

RNASE6 Antibody (C-term) - Product Information

Application	WB,E
Primary Accession	O93091
Other Accession	NP_005606.1
Reactivity	Mouse
Host	Rabbit
Clonality	Polyclonal
Isotype	Rabbit IgG
Antigen Region	119-147

RNASE6 Antibody (C-term) - Additional Information**Gene ID** 6039**Other Names**

Ribonuclease K6, RNase K6, 3127-, RNASE6, RNS6

Target/Specificity

This RNASE6 antibody is generated from rabbits immunized with a KLH conjugated synthetic peptide between 119-147 amino acids from the C-terminal region of human RNASE6.

Dilution

WB~~1:1000

Format

Purified polyclonal antibody supplied in PBS with 0.09% (W/V) sodium azide. This antibody is purified through a protein A column, followed by peptide affinity purification.

Storage

Maintain refrigerated at 2-8°C for up to 2 weeks. For long term storage store at -20°C in small aliquots to prevent freeze-thaw cycles.

Precautions

RNASE6 Antibody (C-term) is for research use only and not for use in diagnostic or therapeutic procedures.

RNASE6 Antibody (C-term) - Protein Information**Name** RNASE6**Synonyms** RNS6**Function** Ribonuclease which shows a preference for the pyrimidines uridine and cytosine

(PubMed:[8836175](#), PubMed:[27013146](#)). Has potent antibacterial activity against a range of Gram-positive and Gram-negative bacteria, including *P.aeruginosa*, *A.baumannii*, *M.luteus*, *S.aureus*, *E.faecalis*, *E.faecium*, *S.saprophyticus* and *E.coli* (PubMed:[25075772](#), PubMed:[27089320](#)). Causes loss of bacterial membrane integrity, and also promotes agglutination of Gram-negative bacteria (PubMed:[27089320](#)). Probably contributes to urinary tract sterility (PubMed:[25075772](#)). Bactericidal activity is independent of RNase activity (PubMed:[27089320](#)).

Cellular Location

Secreted. Lysosome. Cytoplasmic granule

Tissue Location

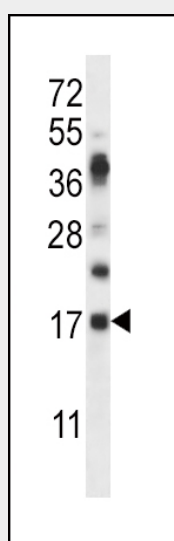
Highly expressed in spleen (at protein level) (PubMed:[8836175](#), PubMed:[25075772](#)). Has little or no expression in healthy kidneys (at protein level) (PubMed:[25075772](#)). Detected in interstitial leukocytes in infected kidneys (at protein level) (PubMed:[25075772](#)). Expressed in ureter where it localizes to urothelial and submucosal leukocytes (at protein level) (PubMed:[25075772](#)). Strong expression in lung and thymus, and lower expression in heart, placenta, pancreas, liver, brain and skeletal muscle (PubMed:[8836175](#), PubMed:[25075772](#)). Also expressed in monocytes and neutrophils (PubMed:[8836175](#)).

RNASE6 Antibody (C-term) - Protocols

Provided below are standard protocols that you may find useful for product applications.

- [Western Blot](#)
- [Blocking Peptides](#)
- [Dot Blot](#)
- [Immunohistochemistry](#)
- [Immunofluorescence](#)
- [Immunoprecipitation](#)
- [Flow Cytometry](#)
- [Cell Culture](#)

RNASE6 Antibody (C-term) - Images



RNASE6 Antibody (C-term) (Cat. #AP13484b) western blot analysis in mouse heart tissue lysates (35ug/lane). This demonstrates the RNASE6 antibody detected the RNASE6 protein (arrow).

RNASE6 Antibody (C-term) - Background

RNASE6 may have a role in host defense.

RNASE6 Antibody (C-term) - References

Lamesch, P., et al. Genomics 89(3):307-315(2007)
Cho, S., et al. Genomics 85(2):208-220(2005)
Deming, M.S., et al. Genome Res. 8(6):599-607(1998)
Rosenberg, H.F., et al. Nucleic Acids Res. 24(18):3507-3513(1996)