

CABP5 Antibody (N-term)
Affinity Purified Rabbit Polyclonal Antibody (Pab)
Catalog # AP13491a

Specification

CABP5 Antibody (N-term) - Product Information

Application	WB,E
Primary Accession	Q9NP86
Other Accession	NP_062829.1
Reactivity	Human
Host	Rabbit
Clonality	Polyclonal
Isotype	Rabbit IgG
Calculated MW	19826
Antigen Region	3-32

CABP5 Antibody (N-term) - Additional Information

Gene ID 56344

Other Names

Calcium-binding protein 5, CaBP5, CABP5, CABP3

Target/Specificity

This CABP5 antibody is generated from rabbits immunized with a KLH conjugated synthetic peptide between 3-32 amino acids from the N-terminal region of human CABP5.

Dilution

WB~~1:1000

Format

Purified polyclonal antibody supplied in PBS with 0.09% (W/V) sodium azide. This antibody is purified through a protein A column, followed by peptide affinity purification.

Storage

Maintain refrigerated at 2-8°C for up to 2 weeks. For long term storage store at -20°C in small aliquots to prevent freeze-thaw cycles.

Precautions

CABP5 Antibody (N-term) is for research use only and not for use in diagnostic or therapeutic procedures.

CABP5 Antibody (N-term) - Protein Information

Name CABP5

Synonyms CABP3

Function Inhibits calcium-dependent inactivation of L-type calcium channel and shifts voltage dependence of activation to more depolarized membrane potentials (By similarity). Involved in the transmission of light signals (By similarity). May positively regulate neurotransmitter vesicle endocytosis and exocytosis in a salt-dependent manner (By similarity). May play a role in the extension and network organization of neurites (By similarity).

Cellular Location

Cytoplasm.

Tissue Location

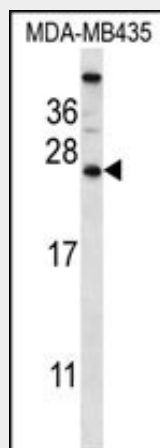
Retina..

CABP5 Antibody (N-term) - Protocols

Provided below are standard protocols that you may find useful for product applications.

- [Western Blot](#)
- [Blocking Peptides](#)
- [Dot Blot](#)
- [Immunohistochemistry](#)
- [Immunofluorescence](#)
- [Immunoprecipitation](#)
- [Flow Cytometry](#)
- [Cell Culture](#)

CABP5 Antibody (N-term) - Images



CABP5 Antibody (N-term) (Cat. #AP13491a) western blot analysis in MDA-MB435 cell line lysates (35ug/lane). This demonstrates the CABP5 antibody detected the CABP5 protein (arrow).

CABP5 Antibody (N-term) - Background

The product of this gene belongs to a subfamily of calcium binding proteins, which share similarity to calmodulin. Calcium binding proteins are an important component of calcium mediated cellular signal transduction. Expression of this gene is retina-specific. The mouse homolog of this protein has been shown to express in the inner nuclear layer of the retina, suggested its role in neuronal functioning. The specific function of this gene is unknown.

CABP5 Antibody (N-term) - References

Haeseleer, F., et al. Biochem. Biophys. Res. Commun. 290(2):615-623(2002)

Haeseleer, F., et al. J. Biol. Chem. 275(2):1247-1260(2000)