

POU3F3 Antibody (Center)
Affinity Purified Rabbit Polyclonal Antibody (Pab)
Catalog # AP13495c

Specification

POU3F3 Antibody (Center) - Product Information

Application	WB,E
Primary Accession	P20264
Other Accession	O63262 , P31361 , P56222 , P31360 , P20265 , P79745 , NP_006227.1
Reactivity	Human
Predicted	Zebrafish, Mouse, Rat
Host	Rabbit
Clonality	Polyclonal
Isotype	Rabbit IgG
Calculated MW	50327
Antigen Region	294-323

POU3F3 Antibody (Center) - Additional Information

Gene ID 5455

Other Names

POU domain, class 3, transcription factor 3, Brain-specific homeobox/POU domain protein 1, Brain-1, Brn-1, Octamer-binding protein 8, Oct-8, Octamer-binding transcription factor 8, OTF-8, POU3F3, BRN1, OTF8

Target/Specificity

This POU3F3 antibody is generated from rabbits immunized with a KLH conjugated synthetic peptide between 294-323 amino acids from the Central region of human POU3F3.

Dilution

WB~~1:1000
E~~Use at an assay dependent concentration.

Format

Purified polyclonal antibody supplied in PBS with 0.09% (W/V) sodium azide. This antibody is purified through a protein A column, followed by peptide affinity purification.

Storage

Maintain refrigerated at 2-8°C for up to 2 weeks. For long term storage store at -20°C in small aliquots to prevent freeze-thaw cycles.

Precautions

POU3F3 Antibody (Center) is for research use only and not for use in diagnostic or therapeutic procedures.

POU3F3 Antibody (Center) - Protein Information

Name POU3F3 ([HGNC:9216](#))

Synonyms BRN1, OTF8

Function Transcription factor that acts synergistically with SOX11 and SOX4. Plays a role in neuronal development (PubMed:[31303265](#)). Is implicated in an enhancer activity at the embryonic met-mesencephalic junction; the enhancer element contains the octamer motif (5'-ATTTGCAT- 3') (By similarity).

Cellular Location

Nucleus.

Tissue Location

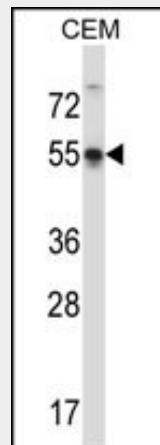
Brain..

POU3F3 Antibody (Center) - Protocols

Provided below are standard protocols that you may find useful for product applications.

- [Western Blot](#)
- [Blocking Peptides](#)
- [Dot Blot](#)
- [Immunohistochemistry](#)
- [Immunofluorescence](#)
- [Immunoprecipitation](#)
- [Flow Cytometry](#)
- [Cell Culture](#)

POU3F3 Antibody (Center) - Images



POU3F3 Antibody (Center) (Cat. #AP13495c) western blot analysis in CEM cell line lysates (35ug/lane). This demonstrates the POU3F3 antibody detected the POU3F3 protein (arrow).

POU3F3 Antibody (Center) - Background

POU3F3 is a member of the class III POU family of transcription factors (see POU3F1; MIM 602479) that are expressed in the central nervous system. The POU domain in these proteins is required for high affinity binding to octamer DNA sequences (summarized by Sumiyama et al., 1996 [PubMed 8703082]). [supplied by

OMIM].

POU3F3 Antibody (Center) - References

- Wissmuller, S., et al. Nucleic Acids Res. 34(6):1735-1744(2006)
Kuhlbrodt, K., et al. J. Biol. Chem. 273(26):16050-16057(1998)
Sumiyama, K., et al. Mamm. Genome 9(2):180-181(1998)
Malik, K.F., et al. Brain Res. Mol. Brain Res. 45(1):99-107(1997)
Sumiyama, K., et al. J. Mol. Evol. 43(3):170-178(1996)