

**MORC1 Antibody (C-term)**  
**Affinity Purified Rabbit Polyclonal Antibody (Pab)**  
**Catalog # AP13528B****Specification**

---

**MORC1 Antibody (C-term) - Product Information**

|                   |                             |
|-------------------|-----------------------------|
| Application       | WB,E                        |
| Primary Accession | <a href="#">Q86VD1</a>      |
| Other Accession   | <a href="#">NP_055244.3</a> |
| Reactivity        | Human                       |
| Host              | Rabbit                      |
| Clonality         | Polyclonal                  |
| Isotype           | Rabbit IgG                  |
| Calculated MW     | 112881                      |
| Antigen Region    | 892-921                     |

**MORC1 Antibody (C-term) - Additional Information****Gene ID** 27136**Other Names**MORC family CW-type zinc finger protein 1, Cancer/testis antigen 33, CT33, MORC1  
{ECO:0000312|EMBL:AAH503071}**Target/Specificity**

This MORC1 antibody is generated from rabbits immunized with a KLH conjugated synthetic peptide between 892-921 amino acids from the C-terminal region of human MORC1.

**Dilution**

WB~~1:1000

**Format**

Purified polyclonal antibody supplied in PBS with 0.09% (W/V) sodium azide. This antibody is purified through a protein A column, followed by peptide affinity purification.

**Storage**

Maintain refrigerated at 2-8°C for up to 2 weeks. For long term storage store at -20°C in small aliquots to prevent freeze-thaw cycles.

**Precautions**

MORC1 Antibody (C-term) is for research use only and not for use in diagnostic or therapeutic procedures.

**MORC1 Antibody (C-term) - Protein Information****Name** MORC1 {ECO:0000312|EMBL:AAH50307.1}**Function** Required for spermatogenesis (By similarity). Essential for de novo DNA methylation and

silencing of transposable elements in the male embryonic germ cells (By similarity).

#### Cellular Location

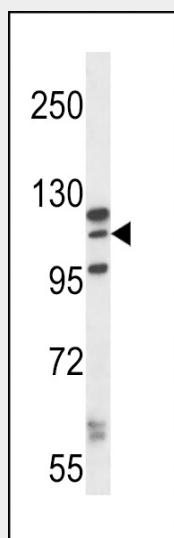
Nucleus {ECO:0000250|UniProtKB:Q9WVL5}.

### MORC1 Antibody (C-term) - Protocols

Provided below are standard protocols that you may find useful for product applications.

- [Western Blot](#)
- [Blocking Peptides](#)
- [Dot Blot](#)
- [Immunohistochemistry](#)
- [Immunofluorescence](#)
- [Immunoprecipitation](#)
- [Flow Cytometry](#)
- [Cell Culture](#)

### MORC1 Antibody (C-term) - Images



MORC1 Antibody (C-term) (Cat. #AP13528b) western blot analysis in K562 cell line lysates (35ug/lane). This demonstrates the MORC1 antibody detected the MORC1 protein (arrow).

### MORC1 Antibody (C-term) - Background

This gene encodes the human homolog of mouse morc and like the mouse protein it is testis-specific. Mouse studies support a testis-specific function since only male knockout mice are infertile; infertility is the only apparent defect. These studies further support a role for this protein early in spermatogenesis, possibly by affecting entry into apoptosis because testis from knockout mice show greatly increased numbers of apoptotic cells.

### MORC1 Antibody (C-term) - References

Rose, J. Phd, et al. Mol. Med. (2010) In press :  
Inoue, N., et al. Cytogenet. Cell Genet. 90 (1-2), 123-125 (2000) :

Inoue, N., et al. Hum. Mol. Genet. 8(7):1201-1207(1999)