

RNASE3 Antibody (C-term)
Affinity Purified Rabbit Polyclonal Antibody (Pab)
Catalog # AP13557b

Specification

RNASE3 Antibody (C-term) - Product Information

Application	IF, WB,E
Primary Accession	P12724
Other Accession	NP_002926.2
Reactivity	Human
Host	Rabbit
Clonality	Polyclonal
Isotype	Rabbit IgG
Antigen Region	124-151

RNASE3 Antibody (C-term) - Additional Information

Gene ID 6037

Other Names

Eosinophil cationic protein, ECP, 3127-, Ribonuclease 3, RNase 3, RNASE3, ECP, RNS3

Target/Specificity

This RNASE3 antibody is generated from rabbits immunized with a KLH conjugated synthetic peptide between 124-151 amino acids of human RNASE3.

Dilution

IF~~1:10~50

WB~~1:1000

Format

Purified polyclonal antibody supplied in PBS with 0.09% (W/V) sodium azide. This antibody is purified through a protein A column, followed by peptide affinity purification.

Storage

Maintain refrigerated at 2-8°C for up to 2 weeks. For long term storage store at -20°C in small aliquots to prevent freeze-thaw cycles.

Precautions

RNASE3 Antibody (C-term) is for research use only and not for use in diagnostic or therapeutic procedures.

RNASE3 Antibody (C-term) - Protein Information

Name RNASE3

Synonyms ECP, RNS3

Function Cytotoxin and helminthotoxin with low-efficiency ribonuclease activity. Possesses a wide variety of biological activities. Exhibits antibacterial activity, including cytoplasmic membrane depolarization of preferentially Gram-negative, but also Gram-positive strains. Promotes E.coli outer membrane detachment, alteration of the overall cell shape and partial loss of cell content.

Cellular Location

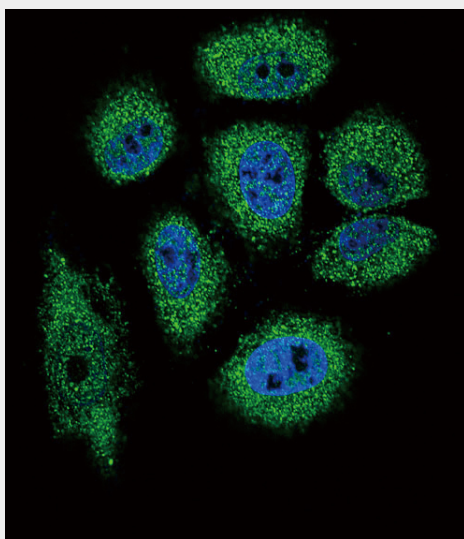
Secreted. Note=Located in the matrix of eosinophil large specific granule, which are released following activation by an immune stimulus

RNASE3 Antibody (C-term) - Protocols

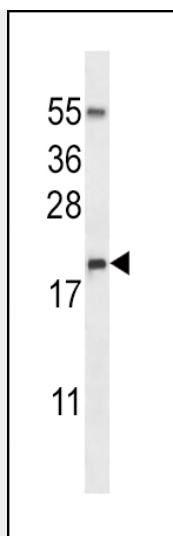
Provided below are standard protocols that you may find useful for product applications.

- [Western Blot](#)
- [Blocking Peptides](#)
- [Dot Blot](#)
- [Immunohistochemistry](#)
- [Immunofluorescence](#)
- [Immunoprecipitation](#)
- [Flow Cytometry](#)
- [Cell Culture](#)

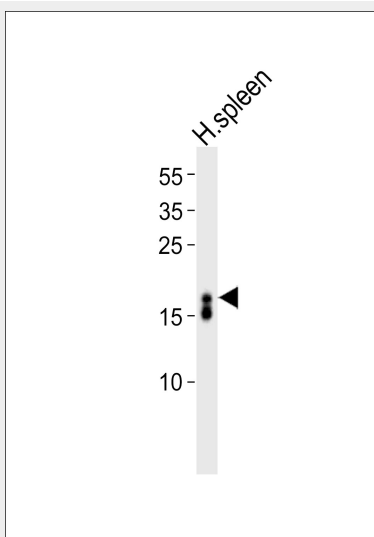
RNASE3 Antibody (C-term) - Images



Confocal immunofluorescent analysis of RNASE3 Antibody (C-term) (Cat#AP13557b) with NCI-H460 cell followed by Alexa Fluor 488-conjugated goat anti-rabbit IgG (green). DAPI was used to stain the cell nuclear (blue).



RNASE3 Antibody (C-term) (Cat. #AP13557b) western blot analysis in NCI-H460 cell line lysates (35ug/lane). This demonstrates the RNASE3 antibody detected the RNASE3 protein (arrow).



Western blot analysis of lysate from human spleen tissue lysate, using RNASE3 Antibody (C-term) (Cat. #AP13557b). AP13557b was diluted at 1:1000. A goat anti-rabbit IgG H&L(HRP) at 1:10000 dilution was used as the secondary antibody. Lysate at 35ug.

RNASE3 Antibody (C-term) - Background

Cytotoxin and helminthotoxin with low-efficiency ribonuclease activity. Possesses a wide variety of biological activities. Exhibits antibacterial activity.

RNASE3 Antibody (C-term) - References

- Peona, V., et al. J Asthma 47(2):131-134(2010)
- Kang, I., et al. Eur Arch Otorhinolaryngol 267(3):391-395(2010)
- Jonsson, U.B., et al. BMC Pulm Med 10, 36 (2010) :
- Kato, M., et al. Int. Arch. Allergy Immunol. 152 SUPPL 1, 62-66 (2010) :
- Chang, K.C., et al. BMC Cell Biol. 11, 6 (2010) :