

NFE2 Antibody (C-term)
Affinity Purified Rabbit Polyclonal Antibody (Pab)
Catalog # AP13561b**Specification**

NFE2 Antibody (C-term) - Product Information

Application	WB,E
Primary Accession	Q16621
Other Accession	NP_001129495.1 , NP_006154.1
Reactivity	Human
Host	Rabbit
Clonality	Polyclonal
Isotype	Rabbit IgG
Calculated MW	41473
Antigen Region	312-340

NFE2 Antibody (C-term) - Additional Information**Gene ID** 4778**Other Names**

Transcription factor NF-E2 45 kDa subunit, Leucine zipper protein NF-E2, Nuclear factor, erythroid-derived 2 45 kDa subunit, p45 NF-E2, NFE2

Target/Specificity

This NFE2 antibody is generated from rabbits immunized with a KLH conjugated synthetic peptide between 312-340 amino acids from the C-terminal region of human NFE2.

Dilution

WB~~1:1000

E~~Use at an assay dependent concentration.

Format

Purified polyclonal antibody supplied in PBS with 0.09% (W/V) sodium azide. This antibody is purified through a protein A column, followed by peptide affinity purification.

Storage

Maintain refrigerated at 2-8°C for up to 2 weeks. For long term storage store at -20°C in small aliquots to prevent freeze-thaw cycles.

Precautions

NFE2 Antibody (C-term) is for research use only and not for use in diagnostic or therapeutic procedures.

NFE2 Antibody (C-term) - Protein Information**Name** NFE2

Function Component of the NF-E2 complex essential for regulating erythroid and megakaryocytic maturation and differentiation. Binds to the hypersensitive site 2 (HS2) of the beta-globin control region (LCR). This subunit (NFE2) recognizes the TCAT/C sequence of the AP-1- like core palindrome present in a number of erythroid and megakaryocytic gene promoters. Requires MAFK or other small MAF proteins for binding to the NF-E2 motif. May play a role in all aspects of hemoglobin production from globin and heme synthesis to procurement of iron.

Cellular Location

Nucleus, PML body. Cytoplasm. Note=The sumoylated form locates to the nuclear bodies PML oncogenic domains (PODs) Translocated to the cytoplasm through interaction with ITCH

Tissue Location

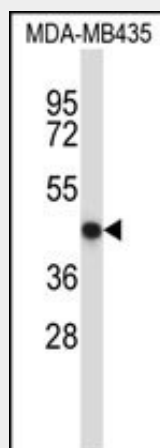
Expressed in hematopoietic cells and also in colon and testis

NFE2 Antibody (C-term) - Protocols

Provided below are standard protocols that you may find useful for product applications.

- [Western Blot](#)
- [Blocking Peptides](#)
- [Dot Blot](#)
- [Immunohistochemistry](#)
- [Immunofluorescence](#)
- [Immunoprecipitation](#)
- [Flow Cytometry](#)
- [Cell Culture](#)

NFE2 Antibody (C-term) - Images



NFE2 Antibody (C-term) (Cat. #AP13561b) western blot analysis in MDA-MB435 cell line lysates (35ug/lane). This demonstrates the NFE2 antibody detected the NFE2 protein (arrow).

NFE2 Antibody (C-term) - Background

Component of the NF-E2 complex essential for regulating erythroid and megakaryocytic maturation and differentiation. Binds to the hypersensitive site 2 (HS2) of the beta-globin control region (LCR). This subunit (NFE2) recognizes the TCAT/C sequence of the AP-1-like core palindrome present in a number of erythroid and megakaryocytic gene promoters. Requires MAFK or other small MAF proteins for binding to the NF-E2 motif. May play a role in all aspects of hemoglobin production from globin and heme synthesis to procurement of iron.

NFE2 Antibody (C-term) - References

Wang, W., et al. Blood 116(2):254-266(2010)
Zhou, Z., et al. J. Biol. Chem. 285(21):15894-15905(2010)
Motohashi, H., et al. Blood 115(3):677-686(2010)
Lee, T.L., et al. Proc. Natl. Acad. Sci. U.S.A. 107(1):52-57(2010)
Soranzo, N., et al. Nat. Genet. 41(11):1182-1190(2009)