

**HSPA12B Antibody (N-term)**  
**Affinity Purified Rabbit Polyclonal Antibody (Pab)**  
**Catalog # AP13579a****Specification**

---

**HSPA12B Antibody (N-term) - Product Information**

Application	IHC-P, WB,E
Primary Accession	<a href="#">O96MM6</a>
Other Accession	<a href="#">O9CZJ2</a> , <a href="#">NP_443202.3</a>
Reactivity	Human
Predicted	Mouse
Host	Rabbit
Clonality	Polyclonal
Isotype	Rabbit IgG
Calculated MW	75688
Antigen Region	108-136

**HSPA12B Antibody (N-term) - Additional Information****Gene ID** 116835**Other Names**

Heat shock 70 kDa protein 12B, HSPA12B, C20orf60

**Target/Specificity**

This HSPA12B antibody is generated from rabbits immunized with a KLH conjugated synthetic peptide between 108-136 amino acids from the N-terminal region of human HSPA12B.

**Dilution**

IHC-P~~1:10~50

WB~~1:1000

E~~Use at an assay dependent concentration.

**Format**

Purified polyclonal antibody supplied in PBS with 0.09% (W/V) sodium azide. This antibody is purified through a protein A column, followed by peptide affinity purification.

**Storage**

Maintain refrigerated at 2-8°C for up to 2 weeks. For long term storage store at -20°C in small aliquots to prevent freeze-thaw cycles.

**Precautions**

HSPA12B Antibody (N-term) is for research use only and not for use in diagnostic or therapeutic procedures.

**HSPA12B Antibody (N-term) - Protein Information****Name** HSPA12B

**Synonyms** C20orf60

**Tissue Location**

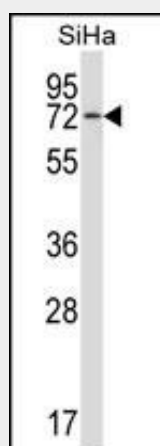
Highest expression in muscle and heart. Lower levels in liver and kidney.

**HSPA12B Antibody (N-term) - Protocols**

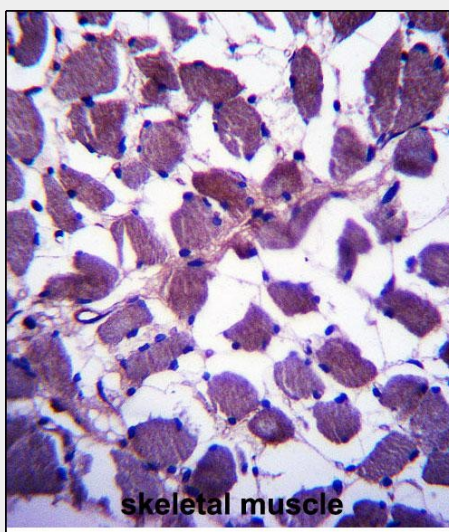
Provided below are standard protocols that you may find useful for product applications.

- [Western Blot](#)
- [Blocking Peptides](#)
- [Dot Blot](#)
- [Immunohistochemistry](#)
- [Immunofluorescence](#)
- [Immunoprecipitation](#)
- [Flow Cytometry](#)
- [Cell Culture](#)

**HSPA12B Antibody (N-term) - Images**



HSPA12B Antibody (N-term) (Cat. #AP13579a) western blot analysis in SiHa cell line lysates (35ug/lane). This demonstrates the HSPA12B antibody detected the HSPA12B protein (arrow).



HSPA12B Antibody (N-term) (Cat. #AP13579a) immunohistochemistry analysis in formalin fixed and paraffin embedded human skeletal muscle followed by peroxidase conjugation of the secondary antibody and DAB staining. This data demonstrates the use of HSPA12B Antibody (N-term) for immunohistochemistry. Clinical relevance has not been evaluated.

#### **HSPA12B Antibody (N-term) - Background**

The protein encoded by this gene contains an atypical heat shock protein 70 (Hsp70) ATPase domain and is therefore a distant member of the mammalian Hsp70 family. This gene may be involved in susceptibility to atherosclerosis. Alternative splicing results in multiple transcript variants.

#### **HSPA12B Antibody (N-term) - References**

Bailey, S.D., et al. Diabetes Care 33(10):2250-2253(2010)  
Talmud, P.J., et al. Am. J. Hum. Genet. 85(5):628-642(2009)  
Starr, J.M., et al. Mech. Ageing Dev. 129(12):745-751(2008)  
Harris, S.E., et al. BMC Genet. 8, 43 (2007) :  
Han, Z., et al. Proc. Natl. Acad. Sci. U.S.A. 100(3):1256-1261(2003)