

**SFRS14 Antibody (C-term)**  
**Affinity Purified Rabbit Polyclonal Antibody (Pab)**  
**Catalog # AP13584B****Specification**

---

**SFRS14 Antibody (C-term) - Product Information**

Application	WB,E
Primary Accession	<a href="#">Q8IX01</a>
Other Accession	<a href="#">Q8CH09</a> , <a href="#">NP_055699.2</a> , <a href="#">NP_001017392.2</a>
Reactivity	Mouse
Host	Rabbit
Clonality	Polyclonal
Isotype	Rabbit IgG
Calculated MW	120207
Antigen Region	1010-1039

**SFRS14 Antibody (C-term) - Additional Information****Gene ID** 10147**Other Names**

SURP and G-patch domain-containing protein 2, Arginine/serine-rich-splicing factor 14, Splicing factor, arginine/serine-rich 14, SUGP2, KIAA0365, SFRS14

**Target/Specificity**

This SFRS14 antibody is generated from rabbits immunized with a KLH conjugated synthetic peptide between 1010-1039 amino acids from the C-terminal region of human SFRS14.

**Dilution**

WB~~1:1000

E~~Use at an assay dependent concentration.

**Format**

Purified polyclonal antibody supplied in PBS with 0.09% (W/V) sodium azide. This antibody is purified through a protein A column, followed by peptide affinity purification.

**Storage**

Maintain refrigerated at 2-8°C for up to 2 weeks. For long term storage store at -20°C in small aliquots to prevent freeze-thaw cycles.

**Precautions**

SFRS14 Antibody (C-term) is for research use only and not for use in diagnostic or therapeutic procedures.

**SFRS14 Antibody (C-term) - Protein Information****Name** SUGP2

**Synonyms** KIAA0365, SFRS14

**Function** May play a role in mRNA splicing.

**Cellular Location**  
Nucleus.

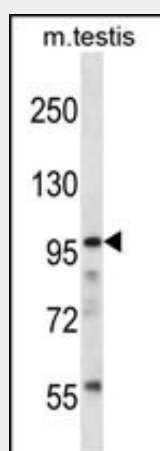
**Tissue Location**  
Detected in adult testis, and in fetal brain and kidney.

### **SFRS14 Antibody (C-term) - Protocols**

Provided below are standard protocols that you may find useful for product applications.

- [Western Blot](#)
- [Blocking Peptides](#)
- [Dot Blot](#)
- [Immunohistochemistry](#)
- [Immunofluorescence](#)
- [Immunoprecipitation](#)
- [Flow Cytometry](#)
- [Cell Culture](#)

### **SFRS14 Antibody (C-term) - Images**



SFRS14 Antibody (C-term) (Cat. #AP13584b) western blot analysis in mouse testis tissue lysates (35ug/lane). This demonstrates the SFRS14 antibody detected the SFRS14 protein (arrow).

### **SFRS14 Antibody (C-term) - Background**

This gene encodes a member of the arginine/serine-rich family of splicing factors. The encoded protein functions in mRNA processing. Alternatively spliced transcript variants have been described.

### **SFRS14 Antibody (C-term) - References**

Sampson, N.D., et al. Gene 305(1):91-100(2003)