

**PCDH18 Antibody (C-term)**  
**Affinity Purified Rabbit Polyclonal Antibody (Pab)**  
**Catalog # AP13587B**

**Specification**

---

**PCDH18 Antibody (C-term) - Product Information**

Application	WB,E
Primary Accession	<a href="#">O9HCL0</a>
Other Accession	<a href="#">NP_061908.1</a>
Reactivity	Mouse
Host	Rabbit
Clonality	Polyclonal
Isotype	Rabbit IgG
Calculated MW	126149
Antigen Region	970-999

**PCDH18 Antibody (C-term) - Additional Information**

**Gene ID** 54510

**Other Names**

Protocadherin-18, PCDH18, KIAA1562

**Target/Specificity**

This PCDH18 antibody is generated from rabbits immunized with a KLH conjugated synthetic peptide between 970-999 amino acids from the C-terminal region of human PCDH18.

**Dilution**

WB~~1:1000

E~~Use at an assay dependent concentration.

**Format**

Purified polyclonal antibody supplied in PBS with 0.09% (W/V) sodium azide. This antibody is purified through a protein A column, followed by peptide affinity purification.

**Storage**

Maintain refrigerated at 2-8°C for up to 2 weeks. For long term storage store at -20°C in small aliquots to prevent freeze-thaw cycles.

**Precautions**

PCDH18 Antibody (C-term) is for research use only and not for use in diagnostic or therapeutic procedures.

**PCDH18 Antibody (C-term) - Protein Information**

**Name** PCDH18

**Synonyms** KIAA1562

**Function** Potential calcium-dependent cell-adhesion protein.

**Cellular Location**

Cell membrane; Single-pass type I membrane protein

**Tissue Location**

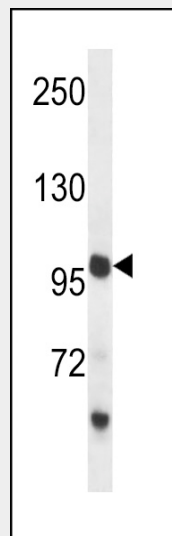
Expressed in all tissues, with highest expression in lung and ovary.

**PCDH18 Antibody (C-term) - Protocols**

Provided below are standard protocols that you may find useful for product applications.

- [Western Blot](#)
- [Blocking Peptides](#)
- [Dot Blot](#)
- [Immunohistochemistry](#)
- [Immunofluorescence](#)
- [Immunoprecipitation](#)
- [Flow Cytometry](#)
- [Cell Culture](#)

**PCDH18 Antibody (C-term) - Images**



PCDH18 Antibody (C-term) (Cat. #AP13587b) western blot analysis in mouse liver tissue lysates (35ug/lane). This demonstrates the PCDH18 antibody detected the PCDH18 protein (arrow).

**PCDH18 Antibody (C-term) - Background**

This gene belongs to the protocadherin gene family, a subfamily of the cadherin superfamily. This gene encodes a protein which contains 6 extracellular cadherin domains, a transmembrane domain and a cytoplasmic tail differing from those of the classical cadherins. Although its specific function is undetermined, the cadherin-related neuronal receptor is thought to play a role in the establishment and function of specific cell-cell connections in the brain.

**PCDH18 Antibody (C-term) - References**

- Homayouni, R., et al. Biochem. Biophys. Res. Commun. 289(2):539-547(2001)  
Wolverton, T., et al. Genomics 76 (1-3), 66-72 (2001) :  
Suzuki, S.T. Exp. Cell Res. 261(1):13-18(2000)  
Nollet, F., et al. J. Mol. Biol. 299(3):551-572(2000)  
Yagi, T., et al. Genes Dev. 14(10):1169-1180(2000)