

**RHBDF2 Antibody (N-term)**  
**Affinity Purified Rabbit Polyclonal Antibody (Pab)**  
**Catalog # AP13588A**

**Specification**

---

**RHBDF2 Antibody (N-term) - Product Information**

Application	WB, IHC-P,E
Primary Accession	<a href="#">Q6PJF5</a>
Other Accession	<a href="#">NP_001005498.2</a> , <a href="#">NP_078875.4</a>
Reactivity	Human, Mouse
Host	Rabbit
Clonality	Polyclonal
Isotype	Rabbit IgG
Antigen Region	80-109

**RHBDF2 Antibody (N-term) - Additional Information**

**Gene ID** 79651

**Other Names**

Inactive rhomboid protein 2, iRhom2, Rhomboid 5 homolog 2, Rhomboid family member 2, Rhomboid veinlet-like protein 5, Rhomboid veinlet-like protein 6, RHBDF2, IRHOM2, RHBDL5, RHBDL6

**Target/Specificity**

This RHBDF2 antibody is generated from rabbits immunized with a KLH conjugated synthetic peptide between 80-109 amino acids from the N-terminal region of human RHBDF2.

**Dilution**

WB~~1:2000

IHC-P~~1:25

E~~Use at an assay dependent concentration.

**Format**

Purified polyclonal antibody supplied in PBS with 0.09% (W/V) sodium azide. This antibody is purified through a protein A column, followed by peptide affinity purification.

**Storage**

Maintain refrigerated at 2-8°C for up to 2 weeks. For long term storage store at -20°C in small aliquots to prevent freeze-thaw cycles.

**Precautions**

RHBDF2 Antibody (N-term) is for research use only and not for use in diagnostic or therapeutic procedures.

**RHBDF2 Antibody (N-term) - Protein Information**

**Name** RHBDF2

**Synonyms** IRHOM2, RHBDL5, RHBDL6

**Function** Regulates ADAM17 protease, a sheddase of the epidermal growth factor (EGF) receptor ligands and TNF, thereby plays a role in sleep, cell survival, proliferation, migration and inflammation. Does not exhibit any protease activity on its own.

**Cellular Location**

Endoplasmic reticulum membrane {ECO:0000250|UniProtKB:Q80WQ6}; Multi-pass membrane protein {ECO:0000250|UniProtKB:Q80WQ6}. Cell membrane

**Tissue Location**

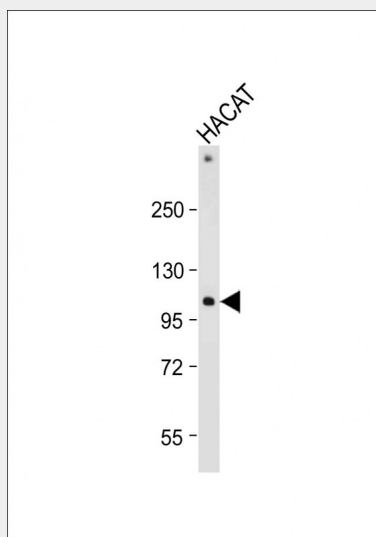
Found in the epidermis and esophageal epithelium.

**RHBDF2 Antibody (N-term) - Protocols**

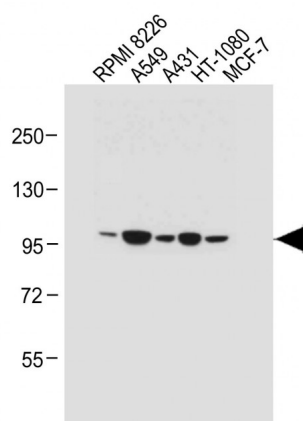
Provided below are standard protocols that you may find useful for product applications.

- [Western Blot](#)
- [Blocking Peptides](#)
- [Dot Blot](#)
- [Immunohistochemistry](#)
- [Immunofluorescence](#)
- [Immunoprecipitation](#)
- [Flow Cytometry](#)
- [Cell Culture](#)

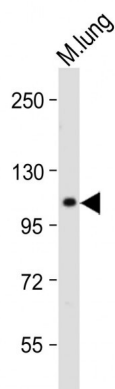
**RHBDF2 Antibody (N-term) - Images**



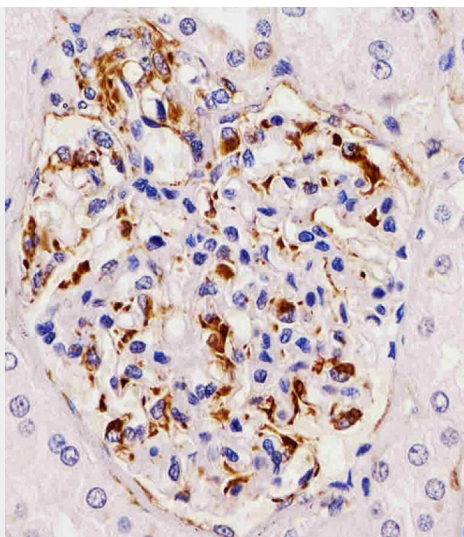
Anti-RHBDF2 Antibody (N-term) at 1:2000 dilution + HACAT whole cell lysate Lysates/proteins at 20 µg per lane. Secondary Goat Anti-Rabbit IgG, (H+L), Peroxidase conjugated at 1/10000 dilution. Predicted band size : 97 kDa Blocking/Dilution buffer: 5% NFDM/TBST.



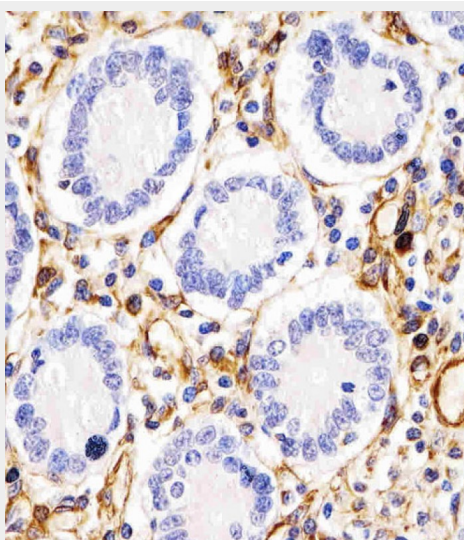
All lanes : Anti-RHBDF2 Antibody (N-term) at 1:1000 dilution Lane 1: RPMI 8226 whole cell lysate Lane 2: A549 whole cell lysate Lane 3: A431 whole cell lysate Lane 4: HT-1080 whole cell lysate Lane 5: MCF-7 whole cell lysate Lysates/proteins at 20  $\mu$ g per lane. Secondary Goat Anti-Rabbit IgG, (H+L), Peroxidase conjugated at 1/10000 dilution. Predicted band size : 97 kDa Blocking/Dilution buffer: 5% NFDM/TBST.



Anti-RHBDF2 Antibody (N-term) at 1:2000 dilution + Mouse lung tissue lysate Lysates/proteins at 20  $\mu$ g per lane. Secondary Goat Anti-Rabbit IgG, (H+L), Peroxidase conjugated at 1/10000 dilution. Predicted band size : 97 kDa Blocking/Dilution buffer: 5% NFDM/TBST.



AP13588a staining RHBDF2 in human kidney tissue sections by Immunohistochemistry (IHC-P - paraformaldehyde-fixed, paraffin-embedded sections). Tissue was fixed with formaldehyde and blocked with 3% BSA for 0.5 hour at room temperature; antigen retrieval was by heat mediation with a citrate buffer (pH6). Samples were incubated with primary antibody (1/25) for 1 hour at 37°C. A undiluted biotinylated goat polyvalent antibody was used as the secondary antibody.



AP13588a staining RHBDF2 in human duodenum tissue sections by Immunohistochemistry (IHC-P - paraformaldehyde-fixed, paraffin-embedded sections). Tissue was fixed with formaldehyde and blocked with 3% BSA for 0.5 hour at room temperature; antigen retrieval was by heat mediation with a citrate buffer (pH6). Samples were incubated with primary antibody (1/25) for 1 hour at 37°C. A undiluted biotinylated goat polyvalent antibody was used as the secondary antibody.

#### **RHBDF2 Antibody (N-term) - Background**

Not expected to have protease activity (By similarity).

#### **RHBDF2 Antibody (N-term) - Citations**

- [Shikonin suppresses colon cancer cell growth and exerts synergistic effects by regulating ADAM17 and the IL-6/STAT3 signaling pathway](#)