

**CNNM4 Antibody (C-term)**  
**Affinity Purified Rabbit Polyclonal Antibody (Pab)**  
**Catalog # AP13590b****Specification**

---

**CNNM4 Antibody (C-term) - Product Information**

Application	WB,E
Primary Accession	<a href="#">Q6P4Q7</a>
Other Accession	<a href="#">NP_064569.3</a>
Reactivity	Human
Host	Rabbit
Clonality	Polyclonal
Isotype	Rabbit IgG
Calculated MW	86607
Antigen Region	501-530

**CNNM4 Antibody (C-term) - Additional Information****Gene ID** 26504**Other Names**

Metal transporter CNNM4, Ancient conserved domain-containing protein 4, Cyclin-M4, CNNM4, ACDP4, KIAA1592

**Target/Specificity**

This CNNM4 antibody is generated from rabbits immunized with a KLH conjugated synthetic peptide between 501-530 amino acids from the C-terminal region of human CNNM4.

**Dilution**

WB~~1:1000

E~~Use at an assay dependent concentration.

**Format**

Purified polyclonal antibody supplied in PBS with 0.09% (W/V) sodium azide. This antibody is purified through a protein A column, followed by peptide affinity purification.

**Storage**

Maintain refrigerated at 2-8°C for up to 2 weeks. For long term storage store at -20°C in small aliquots to prevent freeze-thaw cycles.

**Precautions**

CNNM4 Antibody (C-term) is for research use only and not for use in diagnostic or therapeutic procedures.

**CNNM4 Antibody (C-term) - Protein Information****Name** CNNM4

**Synonyms** ACDP4, KIAA1592

**Function** Probable metal transporter. The interaction with the metal ion chaperone COX11 suggests that it may play a role in sensory neuron functions (By similarity). May play a role in biomineralization and retinal function.

**Cellular Location**

Cell membrane; Multi-pass membrane protein

**Tissue Location**

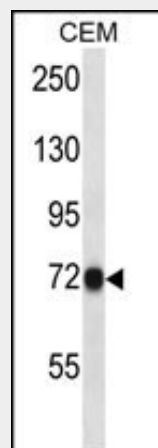
Widely expressed. Highly expressed in heart.

**CNNM4 Antibody (C-term) - Protocols**

Provided below are standard protocols that you may find useful for product applications.

- [Western Blot](#)
- [Blocking Peptides](#)
- [Dot Blot](#)
- [Immunohistochemistry](#)
- [Immunofluorescence](#)
- [Immunoprecipitation](#)
- [Flow Cytometry](#)
- [Cell Culture](#)

**CNNM4 Antibody (C-term) - Images**



CNNM4 Antibody (C-term) (Cat. #AP13590b) western blot analysis in CEM cell line lysates (35ug/lane). This demonstrates the CNNM4 antibody detected the CNNM4 protein (arrow).

**CNNM4 Antibody (C-term) - Background**

This gene encodes a member of the ancient conserved domain containing protein family. Members of this protein family contain a cyclin box motif and have structural similarity to the cyclins. The encoded protein may play a role in metal ion transport. Mutations in this gene are associated with Jalili syndrome which consists of cone-rod dystrophy and amelogenesis imperfecta. [provided by RefSeq].

**CNNM4 Antibody (C-term) - References**

Polok, B., et al. Am. J. Hum. Genet. 84(2):259-265(2009)  
Parry, D.A., et al. Am. J. Hum. Genet. 84(2):266-273(2009)  
Guo, D., et al. Mol Pain 1, 15 (2005) :  
Michaelides, M., et al. J. Med. Genet. 41(6):468-473(2004)  
Wang, C.Y., et al. Gene 306, 37-44 (2003) :