

**RGL1 Antibody (Center)**  
**Affinity Purified Rabbit Polyclonal Antibody (Pab)**  
**Catalog # AP13609c**

**Specification**

---

**RGL1 Antibody (Center) - Product Information**

Application	WB,E
Primary Accession	<a href="#">O9NZL6</a>
Other Accession	<a href="#">NP_055964.3</a>
Reactivity	Mouse
Host	Rabbit
Clonality	Polyclonal
Isotype	Rabbit IgG
Calculated MW	86701
Antigen Region	247-275

**RGL1 Antibody (Center) - Additional Information**

**Gene ID** 23179

**Other Names**

Ral guanine nucleotide dissociation stimulator-like 1, RaIGDS-like 1, RGL1, KIAA0959, RGL

**Target/Specificity**

This RGL1 antibody is generated from rabbits immunized with a KLH conjugated synthetic peptide between 247-275 amino acids from the Central region of human RGL1.

**Dilution**

WB~~1:1000

E~~Use at an assay dependent concentration.

**Format**

Purified polyclonal antibody supplied in PBS with 0.09% (W/V) sodium azide. This antibody is purified through a protein A column, followed by peptide affinity purification.

**Storage**

Maintain refrigerated at 2-8°C for up to 2 weeks. For long term storage store at -20°C in small aliquots to prevent freeze-thaw cycles.

**Precautions**

RGL1 Antibody (Center) is for research use only and not for use in diagnostic or therapeutic procedures.

**RGL1 Antibody (Center) - Protein Information**

**Name** RGL1

**Synonyms** KIAA0959, RGL

**Function** Probable guanine nucleotide exchange factor.

**Tissue Location**

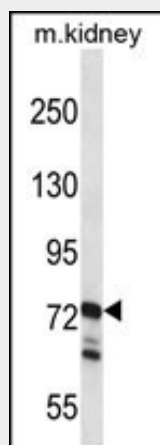
Expressed in a wide variety of tissues with strong expression being seen in the heart, brain, kidney, spleen and testis

**RGL1 Antibody (Center) - Protocols**

Provided below are standard protocols that you may find useful for product applications.

- [Western Blot](#)
- [Blocking Peptides](#)
- [Dot Blot](#)
- [Immunohistochemistry](#)
- [Immunofluorescence](#)
- [Immunoprecipitation](#)
- [Flow Cytometry](#)
- [Cell Culture](#)

**RGL1 Antibody (Center) - Images**



RGL1 Antibody (Center) (Cat. #AP13609c) western blot analysis in mouse kidney tissue lysates (35ug/lane). This demonstrates the RGL1 antibody detected the RGL1 protein (arrow).

**RGL1 Antibody (Center) - Background**

RGL1 is probable guanine nucleotide exchange factor.

**RGL1 Antibody (Center) - References**

Rose, J.E., et al. Mol. Med. 16 (7-8), 247-253 (2010) :  
Uher, R., et al. Am J Psychiatry 167(5):555-564(2010)  
Anney, R.J., et al. Am. J. Med. Genet. B Neuropsychiatr. Genet. 147B (8), 1369-1378 (2008) :  
Sood, R., et al. Biochim. Biophys. Acta 1491 (1-3), 285-288 (2000) :  
Shao, H., et al. Arch. Biochem. Biophys. 371(2):207-219(1999)