

TNN Antibody (Center)
Affinity Purified Rabbit Polyclonal Antibody (Pab)
Catalog # AP13618C**Specification**

TNN Antibody (Center) - Product Information

Application	WB, IHC-P,E
Primary Accession	O9UQP3
Other Accession	NP_071376.1
Reactivity	Mouse
Host	Rabbit
Clonality	Polyclonal
Isotype	Rabbit IgG
Calculated MW	144034
Antigen Region	587-615

TNN Antibody (Center) - Additional Information**Gene ID** 63923**Other Names**

Tenascin-N, TN-N, TNN

Target/Specificity

This TNN antibody is generated from rabbits immunized with a KLH conjugated synthetic peptide between 587-615 amino acids from the Central region of human TNN.

Dilution

WB~~1:1000

IHC-P~~1:10~50

Format

Purified polyclonal antibody supplied in PBS with 0.09% (W/V) sodium azide. This antibody is purified through a protein A column, followed by peptide affinity purification.

Storage

Maintain refrigerated at 2-8°C for up to 2 weeks. For long term storage store at -20°C in small aliquots to prevent freeze-thaw cycles.

Precautions

TNN Antibody (Center) is for research use only and not for use in diagnostic or therapeutic procedures.

TNN Antibody (Center) - Protein Information**Name** TNN ([HGNC:22942](#))**Function** Extracellular matrix protein that seems to be a ligand for ITGA8:ITGB1, ITGAV:ITGB1 and

ITGA4:ITGB1 (By similarity) (PubMed:[17909022](#)). Involved in neurite outgrowth and cell migration in hippocampal explants (By similarity). During endochondral bone formation, inhibits proliferation and differentiation of proteoblasts mediated by canonical WNT signaling (By similarity). In tumors, stimulates angiogenesis by elongation, migration and sprouting of endothelial cells (PubMed:[19884327](#)). Expressed in most mammary tumors, may facilitate tumorigenesis by supporting the migratory behavior of breast cancer cells (PubMed:[17909022](#)).

Cellular Location

Secreted, extracellular space, extracellular matrix

Tissue Location

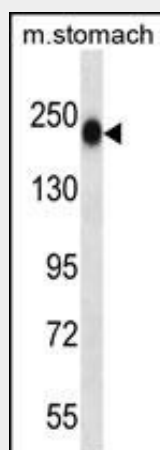
Not detected in normal adult mammary tissues or brain but expressed in most breast tumors and brain tumors, such as glioblastomas, astrocytomas and oligodendrogliomas, tested (PubMed:[17909022](#), PubMed:[19884327](#)). In brain tumors, detected around the endothelial cell layer of the blood vessels (PubMed:[19884327](#))

TNN Antibody (Center) - Protocols

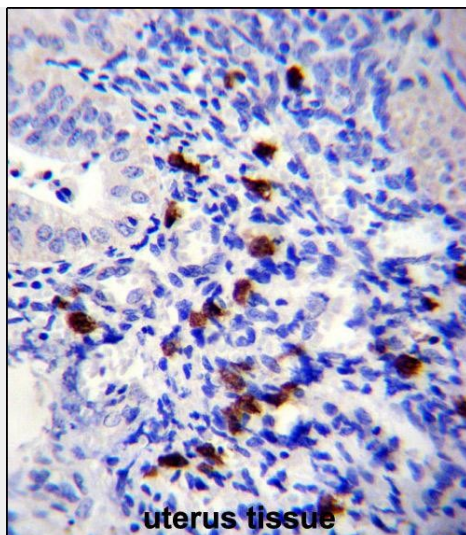
Provided below are standard protocols that you may find useful for product applications.

- [Western Blot](#)
- [Blocking Peptides](#)
- [Dot Blot](#)
- [Immunohistochemistry](#)
- [Immunofluorescence](#)
- [Immunoprecipitation](#)
- [Flow Cytometry](#)
- [Cell Culture](#)

TNN Antibody (Center) - Images



TNN Antibody (Center) (Cat. #AP13618c) western blot analysis in mouse stomach tissue lysates (35ug/lane). This demonstrates the TNN antibody detected the TNN protein (arrow).



TNN Antibody (Center) (Cat. #AP13618c) immunohistochemistry analysis in formalin fixed and paraffin embedded human uterus tissue followed by peroxidase conjugation of the secondary antibody and DAB staining. This data demonstrates the use of TNN Antibody (Center) for immunohistochemistry. Clinical relevance has not been evaluated.

TNN Antibody (Center) - Background

TNN is involved in neurite outgrowth and cell migration in hippocampal explants (By similarity).

TNN Antibody (Center) - References

Gylfe, A.E., et al. Int. J. Cancer (2010) In press :
Degen, M., et al. Int. J. Cancer 122(11):2454-2461(2008)
Degen, M., et al. Cancer Res. 67(19):9169-9179(2007)
Liu, T., et al. J. Proteome Res. 4(6):2070-2080(2005)
Scherberich, A., et al. Oncogene 24(9):1525-1532(2005)