

**PRR18 Antibody (C-term)**  
**Affinity Purified Rabbit Polyclonal Antibody (Pab)**  
**Catalog # AP13631b**

**Specification**

---

**PRR18 Antibody (C-term) - Product Information**

Application	WB, IHC-P,E
Primary Accession	<a href="#">Q8N4B5</a>
Other Accession	<a href="#">NP_787118.2</a>
Reactivity	Human
Host	Rabbit
Clonality	Polyclonal
Isotype	Rabbit IgG
Calculated MW	30926
Antigen Region	225-253

**PRR18 Antibody (C-term) - Additional Information**

**Gene ID** 285800

**Other Names**

Proline-rich protein 18, PRR18

**Target/Specificity**

This PRR18 antibody is generated from rabbits immunized with a KLH conjugated synthetic peptide between 225-253 amino acids from the C-terminal region of human PRR18.

**Dilution**

WB~~1:1000

IHC-P~~1:10~50

**Format**

Purified polyclonal antibody supplied in PBS with 0.09% (W/V) sodium azide. This antibody is purified through a protein A column, followed by peptide affinity purification.

**Storage**

Maintain refrigerated at 2-8°C for up to 2 weeks. For long term storage store at -20°C in small aliquots to prevent freeze-thaw cycles.

**Precautions**

PRR18 Antibody (C-term) is for research use only and not for use in diagnostic or therapeutic procedures.

**PRR18 Antibody (C-term) - Protein Information**

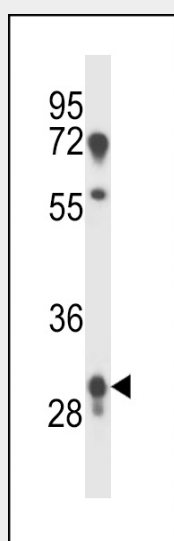
**Name** PRR18

## PRR18 Antibody (C-term) - Protocols

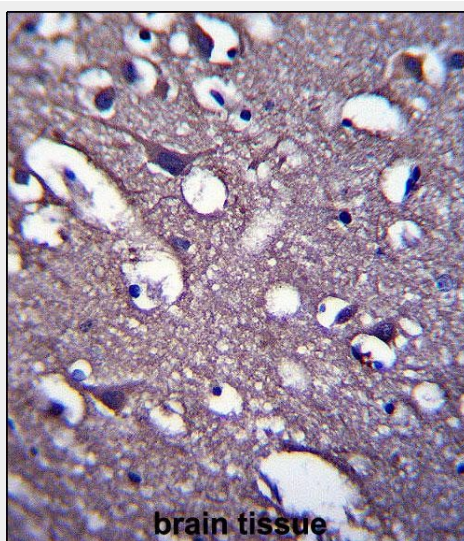
Provided below are standard protocols that you may find useful for product applications.

- [Western Blot](#)
- [Blocking Peptides](#)
- [Dot Blot](#)
- [Immunohistochemistry](#)
- [Immunofluorescence](#)
- [Immunoprecipitation](#)
- [Flow Cytometry](#)
- [Cell Culture](#)

## PRR18 Antibody (C-term) - Images



PRR18 Antibody (C-term) (Cat. #AP13631b) western blot analysis in human placenta tissue lysates (35ug/lane). This demonstrates the PRR18 antibody detected the PRR18 protein (arrow).



PRR18 Antibody (C-term) (Cat. #AP13631b) immunohistochemistry analysis in formalin fixed and paraffin embedded human brain tissue followed by peroxidase conjugation of the secondary antibody and DAB staining. This data demonstrates the use of PRR18 Antibody (C-term) for

immunohistochemistry. Clinical relevance has not been evaluated.

**PRR18 Antibody (C-term) - Background**

The exact functions of PRR18 remain unknown.

**PRR18 Antibody (C-term) - References**

Strausberg, R.L., et al. Proc. Natl. Acad. Sci. U.S.A. 99(26):16899-16903(2002)