

**TRIM31 Antibody (C-term)**  
**Affinity Purified Rabbit Polyclonal Antibody (Pab)**  
**Catalog # AP13642B**

**Specification**

---

**TRIM31 Antibody (C-term) - Product Information**

Application	WB,E
Primary Accession	<a href="#">O9BZY9</a>
Other Accession	<a href="#">NP_008959.3</a>
Reactivity	Human
Host	Rabbit
Clonality	Polyclonal
Isotype	Rabbit IgG
Calculated MW	48244
Antigen Region	279-307

**TRIM31 Antibody (C-term) - Additional Information**

**Gene ID** 11074

**Other Names**

E3 ubiquitin-protein ligase TRIM31, 632-, Tripartite motif-containing protein 31, TRIM31, C6orf13, RNF

**Target/Specificity**

This TRIM31 antibody is generated from rabbits immunized with a KLH conjugated synthetic peptide between 279-307 amino acids from the C-terminal region of human TRIM31.

**Dilution**

WB~~1:1000

E~~Use at an assay dependent concentration.

**Format**

Purified polyclonal antibody supplied in PBS with 0.09% (W/V) sodium azide. This antibody is purified through a protein A column, followed by peptide affinity purification.

**Storage**

Maintain refrigerated at 2-8°C for up to 2 weeks. For long term storage store at -20°C in small aliquots to prevent freeze-thaw cycles.

**Precautions**

TRIM31 Antibody (C-term) is for research use only and not for use in diagnostic or therapeutic procedures.

**TRIM31 Antibody (C-term) - Protein Information**

**Name** TRIM31 {ECO:0000303|PubMed:11331580, ECO:0000312|HGNC:HGNC:16289}

**Function** E3 ubiquitin-protein ligase that acts as a regulator of antiviral immune response and inflammation by mediating ubiquitination of substrates (PubMed:[18773414](#), PubMed:[27929086](#), PubMed:[27992402](#)). Acts as a regulator of innate immune defense against viruses by mediating 'Lys-63'-linked ubiquitination of MAVS, promoting MAVS polymerization and formation of three-stranded helical filaments on mitochondria (PubMed:[27992402](#)). Acts as a negative regulator of the NLRP3 inflammasome by catalyzing 'Lys-48'-linked ubiquitination of NLRP3, leading to its degradation (PubMed:[27929086](#)). Regulator of Src-induced anchorage independent cell growth (By similarity).

#### Cellular Location

Cytoplasm. Mitochondrion. Note=Predominantly expressed in the cytoplasm but a fraction is associated with the mitochondria (PubMed:[18773414](#)). Recruited to mitochondria after viral infection (PubMed:[27992402](#)).

#### Tissue Location

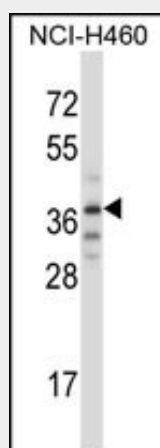
Up-regulated in gastric adenocarcinomas.

### TRIM31 Antibody (C-term) - Protocols

Provided below are standard protocols that you may find useful for product applications.

- [Western Blot](#)
- [Blocking Peptides](#)
- [Dot Blot](#)
- [Immunohistochemistry](#)
- [Immunofluorescence](#)
- [Immunoprecipitation](#)
- [Flow Cytometry](#)
- [Cell Culture](#)

### TRIM31 Antibody (C-term) - Images



TRIM31 Antibody (C-term) (Cat. #AP13642b) western blot analysis in NCI-H460 cell line lysates (35ug/lane). This demonstrates the TRIM31 antibody detected the TRIM31 protein (arrow).

### TRIM31 Antibody (C-term) - Background

The protein encoded by this gene is a member of the tripartite motif (TRIM) family. The TRIM motif includes three zinc-binding domains, a RING, a B-box type 1 and a B-box type 2,

and a coiled-coil region. The protein localizes to both the cytoplasm and the nucleus. Its function has not been identified.

#### **TRIM31 Antibody (C-term) - References**

- Cirulli, E.T., et al. Eur. J. Hum. Genet. 18(7):815-820(2010)  
Barcellos, L.F., et al. PLoS Genet. 5 (10), E1000696 (2009) :  
Wang, A.G., et al. Biochem. Biophys. Res. Commun. 345(3):1022-1032(2006)  
Shiina, T., et al. Genetics 173(3):1555-1570(2006)  
Oh, J.H., et al. Mamm. Genome 16(12):942-954(2005)