

EXOC6B Antibody (C-term)
Affinity Purified Rabbit Polyclonal Antibody (Pab)
Catalog # AP13655B**Specification**

EXOC6B Antibody (C-term) - Product Information

Application	WB,E
Primary Accession	O9Y2D4
Other Accession	A6H5Z3 , NP_056004.1
Reactivity	Mouse
Host	Rabbit
Clonality	Polyclonal
Isotype	Rabbit IgG
Calculated MW	94201
Antigen Region	767-796

EXOC6B Antibody (C-term) - Additional Information**Gene ID** 23233**Other Names**

Exocyst complex component 6B, Exocyst complex component Sec15B, SEC15-like protein 2, EXOC6B, KIAA0919, SEC15B, SEC15L2

Target/Specificity

This EXOC6B antibody is generated from rabbits immunized with a KLH conjugated synthetic peptide between 767-796 amino acids from the C-terminal region of human EXOC6B.

Dilution

WB~~1:1000

E~~Use at an assay dependent concentration.

Format

Purified polyclonal antibody supplied in PBS with 0.09% (W/V) sodium azide. This antibody is purified through a protein A column, followed by peptide affinity purification.

Storage

Maintain refrigerated at 2-8°C for up to 2 weeks. For long term storage store at -20°C in small aliquots to prevent freeze-thaw cycles.

Precautions

EXOC6B Antibody (C-term) is for research use only and not for use in diagnostic or therapeutic procedures.

EXOC6B Antibody (C-term) - Protein Information**Name** EXOC6B

Synonyms KIAA0919, SEC15B, SEC15L2

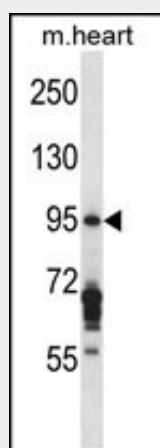
Function Component of the exocyst complex involved in the docking of exocytic vesicles with fusion sites on the plasma membrane.

EXOC6B Antibody (C-term) - Protocols

Provided below are standard protocols that you may find useful for product applications.

- [Western Blot](#)
- [Blocking Peptides](#)
- [Dot Blot](#)
- [Immunohistochemistry](#)
- [Immunofluorescence](#)
- [Immunoprecipitation](#)
- [Flow Cytometry](#)
- [Cell Culture](#)

EXOC6B Antibody (C-term) - Images



EXOC6B Antibody (C-term) (Cat. #AP13655b) western blot analysis in mouse heart tissue lysates (35ug/lane). This demonstrates the EXOC6B antibody detected the EXOC6B protein (arrow).

EXOC6B Antibody (C-term) - Background

In yeast and rat, Sec15 is part of a multiprotein complex that is required for targeted exocytosis.

EXOC6B Antibody (C-term) - References

Borsani, G., et al. Eur J Med Genet 51(4):292-302(2008)
Brymora, A., et al. J. Biol. Chem. 276(32):29792-29797(2001)