

**YY2 Antibody (C-term)**  
**Affinity Purified Rabbit Polyclonal Antibody (Pab)**  
**Catalog # AP13666b****Specification**

---

**YY2 Antibody (C-term) - Product Information**

Application	WB,E
Primary Accession	<a href="#">O15391</a>
Other Accession	<a href="#">NP_996806.2</a>
Reactivity	Human
Host	Rabbit
Clonality	Polyclonal
Isotype	Rabbit IgG
Calculated MW	41347
Antigen Region	224-253

**YY2 Antibody (C-term) - Additional Information****Gene ID** 404281**Other Names**

Transcription factor YY2, Yin and yang 2, YY-2, Zinc finger protein 631, YY2, ZNF631

**Target/Specificity**

This YY2 antibody is generated from rabbits immunized with a KLH conjugated synthetic peptide between 224-253 amino acids from the C-terminal region of human YY2.

**Dilution**

WB~~1:1000

**Format**

Purified polyclonal antibody supplied in PBS with 0.09% (W/V) sodium azide. This antibody is purified through a protein A column, followed by peptide affinity purification.

**Storage**

Maintain refrigerated at 2-8°C for up to 2 weeks. For long term storage store at -20°C in small aliquots to prevent freeze-thaw cycles.

**Precautions**

YY2 Antibody (C-term) is for research use only and not for use in diagnostic or therapeutic procedures.

**YY2 Antibody (C-term) - Protein Information****Name** YY2**Synonyms** ZNF631

**Function** Functions as a multifunctional transcription factor that may exhibit positive and negative control on a large number of genes. May antagonize YY1 and function in development and differentiation.

**Cellular Location**

Nucleus.

**Tissue Location**

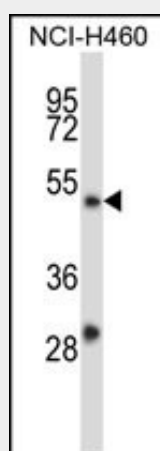
Expressed in kidney, liver, spleen and testis but not in colon.

**YY2 Antibody (C-term) - Protocols**

Provided below are standard protocols that you may find useful for product applications.

- [Western Blot](#)
- [Blocking Peptides](#)
- [Dot Blot](#)
- [Immunohistochemistry](#)
- [Immunofluorescence](#)
- [Immunoprecipitation](#)
- [Flow Cytometry](#)
- [Cell Culture](#)

**YY2 Antibody (C-term) - Images**



YY2 Antibody (C-term) (Cat. #AP13666b) western blot analysis in NCI-H460 cell line lysates (35ug/lane). This demonstrates the YY2 antibody detected the YY2 protein (arrow).

**YY2 Antibody (C-term) - Background**

The protein encoded by this gene is a transcription factor that includes several Kruppel-like zinc fingers in its C-terminal region. It possesses both activation and repression domains, and it can therefore have both positive and negative effects on the transcription of target genes. This gene has an intronless coding region, and it appears to have arisen by retrotransposition of the related YY1 transcription factor gene, which is located on chromosome 14.

**YY2 Antibody (C-term) - References**

Chen, L., et al. Nucleic Acids Res. 38(12):4011-4026(2010)

Klar, M., et al. Gene 430 (1-2), 58-63 (2009) :

Kim, J.D., et al. Nucleic Acids Res. 35(10):3442-3452(2007)

Luo, C., et al. Genomics 87(3):348-355(2006)

Klar, M., et al. Mol. Cell. Biol. 25(22):10159-10170(2005)

**YY2 Antibody (C-term) - Citations**

- [The Forgotten YY2 in Reported YY1 Expression Levels in Human Cancers.](#)