

PPP1R3F Antibody (C-term)
Affinity Purified Rabbit Polyclonal Antibody (Pab)
Catalog # AP13676b

Specification

PPP1R3F Antibody (C-term) - Product Information

Application	IHC-P, WB,E
Primary Accession	Q6ZSY5
Other Accession	Q9JIG4 , NP_149992.3
Reactivity	Human
Predicted	Mouse
Host	Rabbit
Clonality	Polyclonal
Isotype	Rabbit IgG
Calculated MW	82798
Antigen Region	549-578

PPP1R3F Antibody (C-term) - Additional Information

Gene ID 89801

Other Names

Protein phosphatase 1 regulatory subunit 3F, R3F, PPP1R3F

Target/Specificity

This PPP1R3F antibody is generated from rabbits immunized with a KLH conjugated synthetic peptide between 549-578 amino acids from the C-terminal region of human PPP1R3F.

Dilution

IHC-P~~1:10~50

WB~~1:1000

E~~Use at an assay dependent concentration.

Format

Purified polyclonal antibody supplied in PBS with 0.09% (W/V) sodium azide. This antibody is purified through a protein A column, followed by peptide affinity purification.

Storage

Maintain refrigerated at 2-8°C for up to 2 weeks. For long term storage store at -20°C in small aliquots to prevent freeze-thaw cycles.

Precautions

PPP1R3F Antibody (C-term) is for research use only and not for use in diagnostic or therapeutic procedures.

PPP1R3F Antibody (C-term) - Protein Information

Name PPP1R3F

Function Glycogen-targeting subunit for protein phosphatase 1 (PP1).

Cellular Location

Membrane; Single-pass membrane protein

Tissue Location

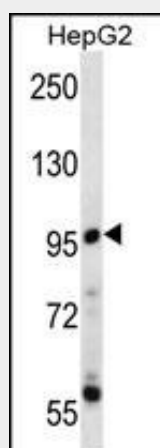
Expressed in brain, skeletal muscle and heart.

PPP1R3F Antibody (C-term) - Protocols

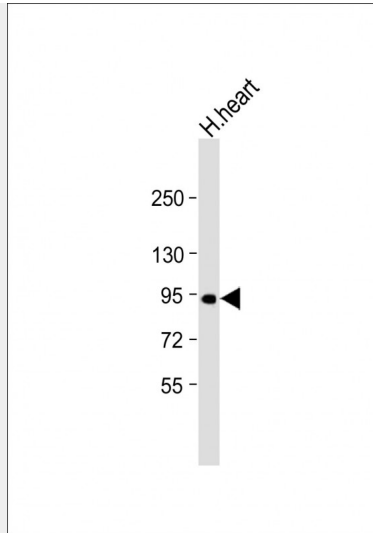
Provided below are standard protocols that you may find useful for product applications.

- [Western Blot](#)
- [Blocking Peptides](#)
- [Dot Blot](#)
- [Immunohistochemistry](#)
- [Immunofluorescence](#)
- [Immunoprecipitation](#)
- [Flow Cytometry](#)
- [Cell Culture](#)

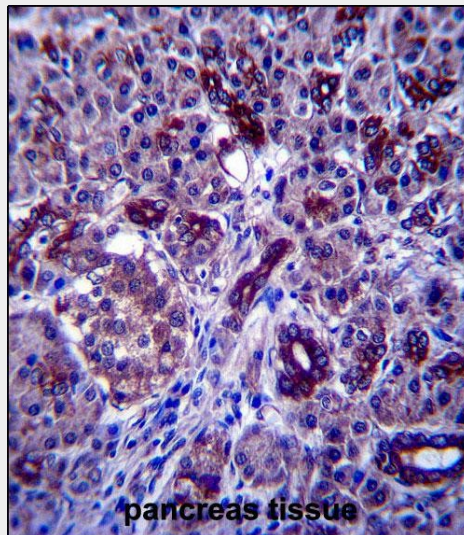
PPP1R3F Antibody (C-term) - Images



PPP1R3F Antibody (C-term) (Cat. #AP13676b) western blot analysis in HepG2 cell line lysates (35ug/lane). This demonstrates the PPP1R3F antibody detected the PPP1R3F protein (arrow).



Anti-PPP1R3F Antibody (C-term) at 1:1000 dilution + human heart lysate Lysates/proteins at 20 µg per lane. Secondary Goat Anti-Rabbit IgG, (H+L), Peroxidase conjugated at 1/10000 dilution. Predicted band size : 83 kDa Blocking/Dilution buffer: 5% NFDM/TBST.



PPP1R3F Antibody (C-term) (Cat. #AP13676b) immunohistochemistry analysis in formalin fixed and paraffin embedded human pancreas tissue followed by peroxidase conjugation of the secondary antibody and DAB staining. This data demonstrates the use of PPP1R3F Antibody (C-term) for immunohistochemistry. Clinical relevance has not been evaluated.

PPP1R3F Antibody (C-term) - Background

This gene encodes a protein that has been identified as one of several type-1 protein phosphatase (PP1) regulatory subunits. One or two of these subunits, together with the well-conserved catalytic subunit, can form the PP1 holoenzyme, where the regulatory subunit functions to regulate substrate specificity and/or targeting to a particular cellular compartment. Alternative splicing results in multiple transcript variants.

PPP1R3F Antibody (C-term) - References

Suttner, K., et al. J. Allergy Clin. Immunol. 125(6):1395-1399(2010)

Piton, A., et al. Mol. Psychiatry (2010) In press :
Ceulemans, H., et al. Bioessays 24(4):371-381(2002)
Schindelhauer, D., et al. Genome Res. 6(11):1056-1069(1996)