

PYGB Antibody (N-term)
Affinity Purified Rabbit Polyclonal Antibody (Pab)
Catalog # AP13699a

Specification

PYGB Antibody (N-term) - Product Information

Application	WB,E
Primary Accession	P11216
Other Accession	NP_002853.2
Reactivity	Mouse
Host	Rabbit
Clonality	Polyclonal
Isotype	Rabbit IgG
Calculated MW	96696
Antigen Region	1-30

PYGB Antibody (N-term) - Additional Information

Gene ID 5834

Other Names

Glycogen phosphorylase, brain form, PYGB

Target/Specificity

This PYGB antibody is generated from rabbits immunized with a KLH conjugated synthetic peptide between 1-30 amino acids from the N-terminal region of human PYGB.

Dilution

WB~~1:1000

Format

Purified polyclonal antibody supplied in PBS with 0.09% (W/V) sodium azide. This antibody is purified through a protein A column, followed by peptide affinity purification.

Storage

Maintain refrigerated at 2-8°C for up to 2 weeks. For long term storage store at -20°C in small aliquots to prevent freeze-thaw cycles.

Precautions

PYGB Antibody (N-term) is for research use only and not for use in diagnostic or therapeutic procedures.

PYGB Antibody (N-term) - Protein Information

Name PYGB {ECO:0000303|PubMed:3346228}

Function Glycogen phosphorylase that regulates glycogen mobilization (PubMed:[27402852](#)). Phosphorylase is an important allosteric enzyme in carbohydrate metabolism (PubMed:[3346228](#)).

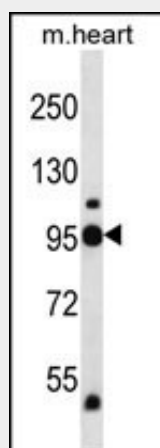
Enzymes from different sources differ in their regulatory mechanisms and in their natural substrates (PubMed:[3346228](#)). However, all known phosphorylases share catalytic and structural properties (PubMed:[3346228](#)).

PYGB Antibody (N-term) - Protocols

Provided below are standard protocols that you may find useful for product applications.

- [Western Blot](#)
- [Blocking Peptides](#)
- [Dot Blot](#)
- [Immunohistochemistry](#)
- [Immunofluorescence](#)
- [Immunoprecipitation](#)
- [Flow Cytometry](#)
- [Cell Culture](#)

PYGB Antibody (N-term) - Images



PYGB Antibody (N-term) (Cat. #AP13699a) western blot analysis in mouse heart tissue lysates (35ug/lane). This demonstrates the PYGB antibody detected the PYGB protein (arrow).

PYGB Antibody (N-term) - Background

The protein encoded by this gene is a glycogen phosphorylase found predominantly in the brain. The encoded protein forms homodimers which can associate into homotetramers, the enzymatically active form of glycogen phosphorylase. The activity of this enzyme is positively regulated by AMP and negatively regulated by ATP, ADP, and glucose-6-phosphate. This enzyme catalyzes the rate-determining step in glycogen degradation.

PYGB Antibody (N-term) - References

Pudil, R., et al. Clin. Chem. Lab. Med. 48(8):1193-1195(2010)
Martins-de-Souza, D., et al. J Psychiatr Res (2010) In press :
Yoshida, T., et al. Int. J. Mol. Med. 25(4):649-656(2010)
Oguri, M., et al. Am. J. Hypertens. 23(1):70-77(2010)
Chapuis, J., et al. Mol. Psychiatry 14(11):1004-1016(2009)