

**MCL1 Antibody (Center)**  
**Affinity Purified Rabbit Polyclonal Antibody (Pab)**  
**Catalog # AP13704c****Specification**

---

**MCL1 Antibody (Center) - Product Information**

Application	IHC-P, WB,E
Primary Accession	<a href="#">Q07820</a>
Other Accession	<a href="#">Q9Z1P3</a> , <a href="#">NP_877495.1</a> , <a href="#">NP_068779.1</a>
Reactivity	Human
Predicted	Rat
Host	Rabbit
Clonality	Polyclonal
Isotype	Rabbit IgG
Calculated MW	37337
Antigen Region	217-245

**MCL1 Antibody (Center) - Additional Information****Gene ID** 4170**Other Names**

Induced myeloid leukemia cell differentiation protein Mcl-1, Bcl-2-like protein 3, Bcl2-L-3, Bcl-2-related protein EAT/mcl1, mcl1/EAT, MCL1, BCL2L3

**Target/Specificity**

This MCL1 antibody is generated from rabbits immunized with a KLH conjugated synthetic peptide between 217-245 amino acids from the Central region of human MCL1.

**Dilution**

IHC-P~~1:10~50

WB~~1:1000

E~~Use at an assay dependent concentration.

**Format**

Purified polyclonal antibody supplied in PBS with 0.09% (W/V) sodium azide. This antibody is purified through a protein A column, followed by peptide affinity purification.

**Storage**

Maintain refrigerated at 2-8°C for up to 2 weeks. For long term storage store at -20°C in small aliquots to prevent freeze-thaw cycles.

**Precautions**

MCL1 Antibody (Center) is for research use only and not for use in diagnostic or therapeutic procedures.

**MCL1 Antibody (Center) - Protein Information**

**Name** MCL1

**Synonyms** BCL2L3

**Function** Involved in the regulation of apoptosis versus cell survival, and in the maintenance of viability but not of proliferation. Mediates its effects by interactions with a number of other regulators of apoptosis. Isoform 1 inhibits apoptosis. Isoform 2 promotes apoptosis.

**Cellular Location**

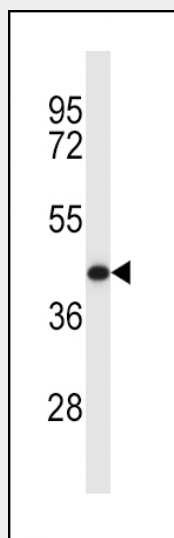
Membrane; Single-pass membrane protein. Cytoplasm. Mitochondrion. Nucleus, nucleoplasm  
Note=Cytoplasmic, associated with mitochondria

**MCL1 Antibody (Center) - Protocols**

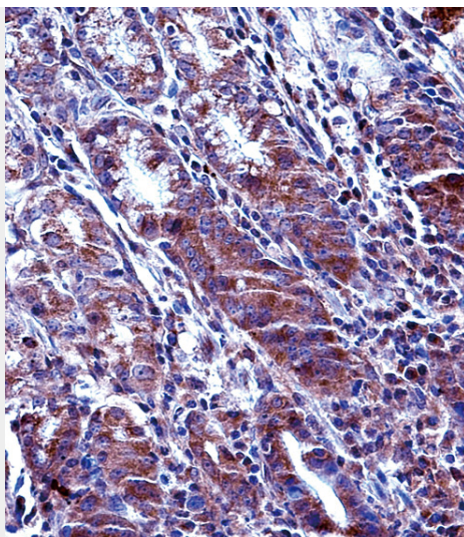
Provided below are standard protocols that you may find useful for product applications.

- [Western Blot](#)
- [Blocking Peptides](#)
- [Dot Blot](#)
- [Immunohistochemistry](#)
- [Immunofluorescence](#)
- [Immunoprecipitation](#)
- [Flow Cytometry](#)
- [Cell Culture](#)

**MCL1 Antibody (Center) - Images**



MCL1 Antibody (Center) (Cat. #AP13704c) western blot analysis in Y79 cell line lysates (35ug/lane). This demonstrates the MCL1 antibody detected the MCL1 protein (arrow).



MCL1 Antibody (Center) (Cat. #AP13704c) immunohistochemistry analysis in formalin fixed and paraffin embedded human stomach tissue followed by peroxidase conjugation of the secondary antibody and DAB staining. This data demonstrates the use of MCL1 Antibody (Center) for immunohistochemistry. Clinical relevance has not been evaluated.

#### **MCL1 Antibody (Center) - Background**

This gene encodes an anti-apoptotic protein, which is a member of the Bcl-2 family. Alternative splicing results in multiple transcript variants. The longest gene product (isoform 1) enhances cell survival by inhibiting apoptosis while the alternatively spliced shorter gene products (isoform 2 and isoform 3) promote apoptosis and are death-inducing.

#### **MCL1 Antibody (Center) - References**

Shimada, M., et al. Hum. Genet. 128(4):433-441(2010)  
Bailey, S.D., et al. Diabetes Care 33(10):2250-2253(2010)  
Kim, J.H., et al. FEBS Lett. 583(17):2758-2764(2009)  
Maurer, U., et al. Mol. Cell 21(6):749-760(2006)  
Domina, A.M., et al. Oncogene 23(31):5301-5315(2004)