

ICAM3 Antibody (Center)
Affinity Purified Rabbit Polyclonal Antibody (Pab)
Catalog # AP13708c**Specification**

ICAM3 Antibody (Center) - Product Information

Application	WB,E
Primary Accession	P32942
Other Accession	NP_002153.2
Reactivity	Human
Host	Rabbit
Clonality	Polyclonal
Isotype	Rabbit IgG
Calculated MW	59541
Antigen Region	282-310

ICAM3 Antibody (Center) - Additional Information**Gene ID** 3385**Other Names**

Intercellular adhesion molecule 3, ICAM-3, CDw50, ICAM-R, CD50, ICAM3

Target/Specificity

This ICAM3 antibody is generated from rabbits immunized with a KLH conjugated synthetic peptide between 282-310 amino acids from the Central region of human ICAM3.

Dilution

WB~~1:1000

E~~Use at an assay dependent concentration.

Format

Purified polyclonal antibody supplied in PBS with 0.09% (W/V) sodium azide. This antibody is purified through a protein A column, followed by peptide affinity purification.

Storage

Maintain refrigerated at 2-8°C for up to 2 weeks. For long term storage store at -20°C in small aliquots to prevent freeze-thaw cycles.

Precautions

ICAM3 Antibody (Center) is for research use only and not for use in diagnostic or therapeutic procedures.

ICAM3 Antibody (Center) - Protein Information**Name** ICAM3**Function** ICAM proteins are ligands for the leukocyte adhesion protein LFA-1 (integrin

alpha-L/beta-2) (PubMed:[1448173](#)). ICAM3 is also a ligand for integrin alpha-D/beta-2. In association with integrin alpha- L/beta-2, contributes to apoptotic neutrophil phagocytosis by macrophages (PubMed:[23775590](#)).

Cellular Location

Membrane; Single-pass type I membrane protein.

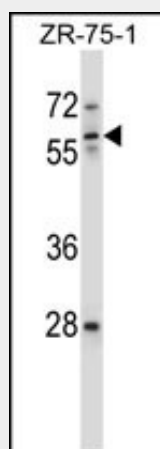
Tissue Location

Leukocytes.

ICAM3 Antibody (Center) - Protocols

Provided below are standard protocols that you may find useful for product applications.

- [Western Blot](#)
- [Blocking Peptides](#)
- [Dot Blot](#)
- [Immunohistochemistry](#)
- [Immunofluorescence](#)
- [Immunoprecipitation](#)
- [Flow Cytometry](#)
- [Cell Culture](#)

ICAM3 Antibody (Center) - Images

ICAM3 Antibody (Center) (Cat. #AP13708c) western blot analysis in ZR-75-1 cell line lysates (35ug/lane). This demonstrates the ICAM3 antibody detected the ICAM3 protein (arrow).

ICAM3 Antibody (Center) - Background

The protein encoded by this gene is a member of the intercellular adhesion molecule (ICAM) family. All ICAM proteins are type I transmembrane glycoproteins, contain 2-9 immunoglobulin-like C2-type domains, and bind to the leukocyte adhesion LFA-1 protein. This protein is constitutively and abundantly expressed by all leucocytes and may be the most important ligand for LFA-1 in the initiation of the immune response. It functions not only as an adhesion molecule, but also as a potent signalling molecule.

ICAM3 Antibody (Center) - References

Bailey, S.D., et al. Diabetes Care 33(10):2250-2253(2010)
Han, S., et al. Hum. Immunol. 71(7):727-730(2010)
Mosbruger, T.L., et al. J. Infect. Dis. 201(9):1371-1380(2010)
Rajaraman, P., et al. Cancer Epidemiol. Biomarkers Prev. 19(5):1356-1361(2010)
Reuss, R., et al. Mult. Scler. 16(3):366-369(2010)