

**SUMO1 Antibody (N-term)**  
**Affinity Purified Rabbit Polyclonal Antibody (Pab)**  
**Catalog # AP13711a**

**Specification**

---

**SUMO1 Antibody (N-term) - Product Information**

Application	WB, IHC-P, IF, E
Primary Accession	<a href="#">P63165</a>
Other Accession	<a href="#">Q5I0H3</a> , <a href="#">A7WLH8</a> , <a href="#">P63166</a> , <a href="#">Q5E9D1</a> , <a href="#">NP_001005781.1</a> , <a href="#">NP_003343.1</a>
Reactivity	Human, Mouse
Predicted	Bovine, Pig, Rat
Host	Rabbit
Clonality	Polyclonal
Isotype	Rabbit IgG
Antigen Region	1-30

**SUMO1 Antibody (N-term) - Additional Information**

**Gene ID** 7341

**Other Names**

Small ubiquitin-related modifier 1, SUMO-1, GAP-modifying protein 1, GMP1, SMT3 homolog 3, Sentrin, Ubiquitin-homology domain protein PIC1, Ubiquitin-like protein SMT3C, Smt3C, Ubiquitin-like protein UBL1, SUMO1, SMT3C, SMT3H3, UBL1

**Target/Specificity**

This SUMO1 antibody is generated from rabbits immunized with a KLH conjugated synthetic peptide between 1-30 amino acids from the N-terminal region of human SUMO1.

**Dilution**

WB~~1:1000  
IHC-P~~1:10~50  
IF~~1:10~50  
E~~Use at an assay dependent concentration.

**Format**

Purified polyclonal antibody supplied in PBS with 0.09% (W/V) sodium azide. This antibody is purified through a protein A column, followed by peptide affinity purification.

**Storage**

Maintain refrigerated at 2-8°C for up to 2 weeks. For long term storage store at -20°C in small aliquots to prevent freeze-thaw cycles.

**Precautions**

SUMO1 Antibody (N-term) is for research use only and not for use in diagnostic or therapeutic procedures.

**SUMO1 Antibody (N-term) - Protein Information**

**Name** SUMO1**Synonyms** SMT3C, SMT3H3, UBL1

**Function** Ubiquitin-like protein that can be covalently attached to proteins as a monomer or a lysine-linked polymer. Covalent attachment via an isopeptide bond to its substrates requires prior activation by the E1 complex SAE1-SAE2 and linkage to the E2 enzyme UBE2I, and can be promoted by E3 ligases such as PIAS1-4, RANBP2 or CBX4. This post- translational modification on lysine residues of proteins plays a crucial role in a number of cellular processes such as nuclear transport, DNA replication and repair, mitosis and signal transduction. Involved for instance in targeting RANGAP1 to the nuclear pore complex protein RANBP2. Covalently attached to the voltage-gated potassium channel KCNB1; this modulates the gating characteristics of KCNB1 (PubMed:[19223394](#)). Polymeric SUMO1 chains are also susceptible to polyubiquitination which functions as a signal for proteasomal degradation of modified proteins. May also regulate a network of genes involved in palate development. Covalently attached to ZFH3 (PubMed:[24651376](#)).

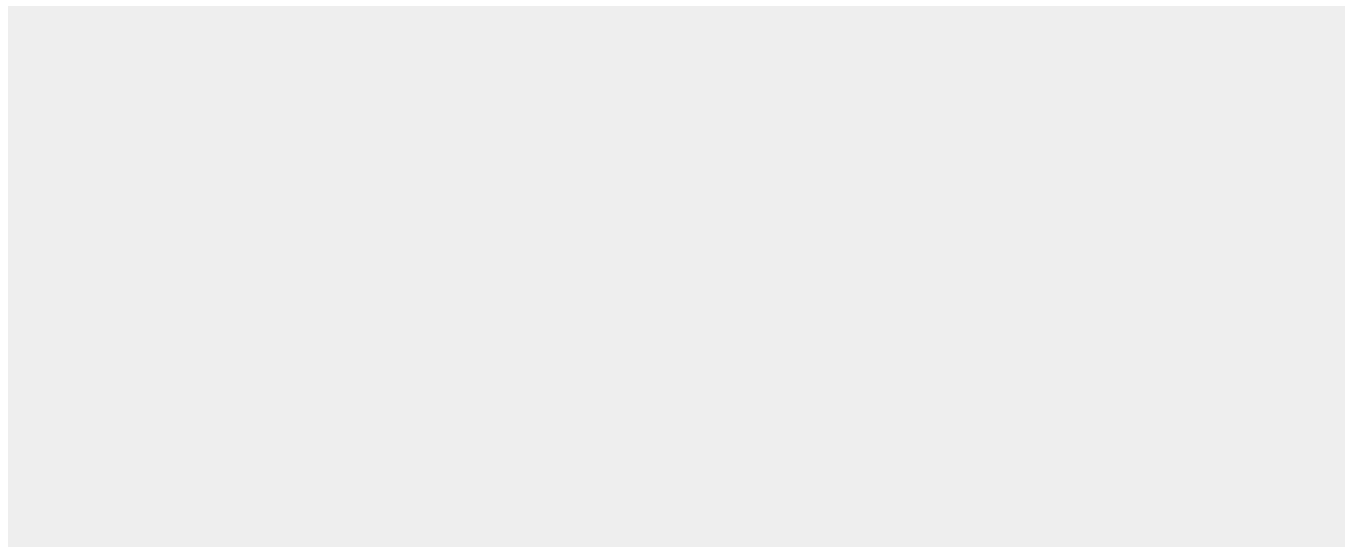
**Cellular Location**

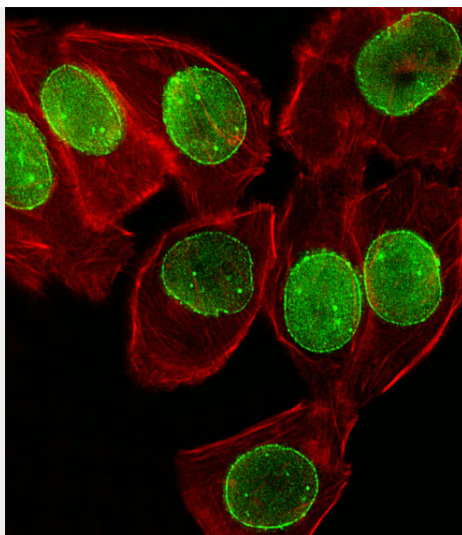
Nucleus membrane. Nucleus speckle {ECO:0000250|UniProtKB:P63166}. Cytoplasm. Nucleus, PML body. Cell membrane. Nucleus. Note=Recruited by BCL11A into the nuclear body (By similarity). In the presence of ZFH3, sequestered to nuclear body (NB)-like dots in the nucleus some of which overlap or closely associate with PML body (PubMed:24651376) {ECO:0000250|UniProtKB:P63166, ECO:0000269|PubMed:24651376}

**SUMO1 Antibody (N-term) - Protocols**

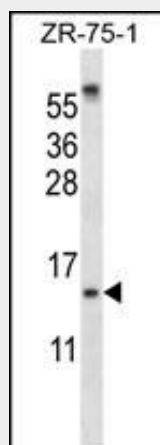
Provided below are standard protocols that you may find useful for product applications.

- [Western Blot](#)
- [Blocking Peptides](#)
- [Dot Blot](#)
- [Immunohistochemistry](#)
- [Immunofluorescence](#)
- [Immunoprecipitation](#)
- [Flow Cytometry](#)
- [Cell Culture](#)

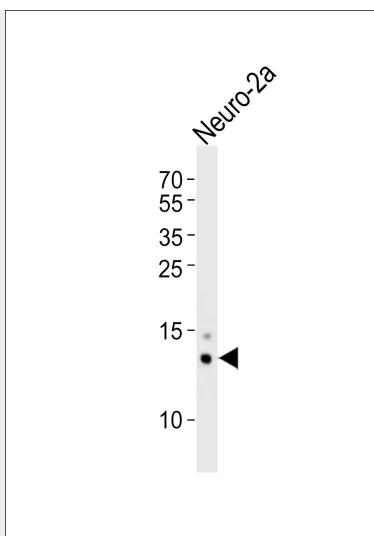
**SUMO1 Antibody (N-term) - Images**



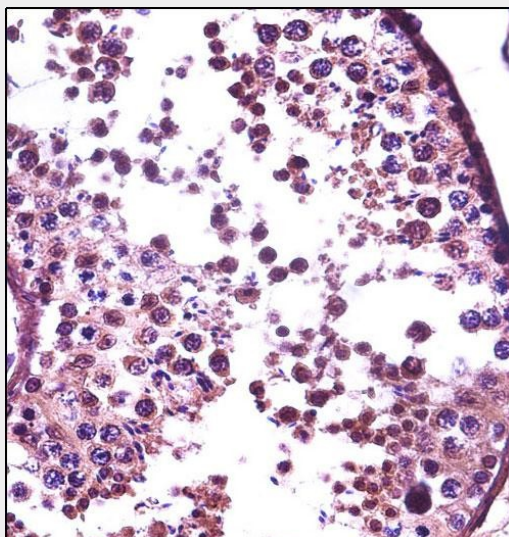
Fluorescent image of A549 cell stained with SUMO1 Antibody (N-term)(Cat#AP13711a).A549 cells were fixed with 4% PFA (20 min), permeabilized with Triton X-100 (0.1%, 10 min), then incubated with SUMO1 primary antibody (1:25, 1 h at 37°C). For secondary antibody, Alexa Fluor® 488 conjugated donkey anti-rabbit antibody (green) was used (1:400, 50 min at 37°C).Cytoplasmic actin was counterstained with Alexa Fluor® 555 (red) conjugated Phalloidin (7units/ml, 1 h at 37°C).SUMO1 immunoreactivity is localized to Nuclear Membrane significantly.



SUMO1 Antibody (N-term) (Cat. #AP13711a) western blot analysis in ZR-75-1 cell line lysates (35ug/lane).This demonstrates the SUMO1 antibody detected the SUMO1 protein (arrow).



Western blot analysis of lysate from mouse Neuro-2a cell line, using SUMO1 Antibody (N-term) (Cat. #AP13711a). AP13711a was diluted at 1:1000 at each lane. A goat anti-rabbit IgG H&L(HRP) at 1:5000 dilution was used as the secondary antibody. Lysate at 35ug.



SUMO1 Antibody (N-term) (Cat. #AP13711a) immunohistochemistry analysis in formalin fixed and paraffin embedded human testis tissue followed by peroxidase conjugation of the secondary antibody and DAB staining. This data demonstrates the use of SUMO1 Antibody (N-term) for immunohistochemistry. Clinical relevance has not been evaluated.

### **SUMO1 Antibody (N-term) - Background**

This gene encodes a protein that is a member of the SUMO (small ubiquitin-like modifier) protein family. It functions in a manner similar to ubiquitin in that it is bound to target proteins as part of a post-translational modification system. However, unlike ubiquitin which targets proteins for degradation, this protein is involved in a variety of cellular processes, such as nuclear transport, transcriptional regulation, apoptosis, and protein stability. It is not active until the last four amino acids of the carboxy-terminus have been cleaved off. Several pseudogenes have been reported for this gene. Alternate transcriptional splice variants encoding different isoforms have been characterized.

### **SUMO1 Antibody (N-term) - References**

Jia, Z.L., et al. DNA Cell Biol. 29(11):675-680(2010) Kang, X., et al. Oncogene 29(41):5568-5578(2010) Bailey, S.D., et al. Diabetes Care 33(10):2250-2253(2010) Cox, B., et al. PLoS ONE 5 (8), E11996 (2010) : Jugessur, A., et al. PLoS ONE 5 (7), E11493 (2010) :