

CD7 Antibody (Center)
Affinity Purified Rabbit Polyclonal Antibody (Pab)
Catalog # AP13714c**Specification**

CD7 Antibody (Center) - Product Information

Application	WB,E
Primary Accession	P09564
Other Accession	NP_006128.1
Reactivity	Human
Host	Rabbit
Clonality	Polyclonal
Isotype	Rabbit IgG
Calculated MW	25409
Antigen Region	63-92

CD7 Antibody (Center) - Additional Information**Gene ID** 924**Other Names**

T-cell antigen CD7, GP40, T-cell leukemia antigen, T-cell surface antigen Leu-9, TP41, CD7, CD7

Target/Specificity

This CD7 antibody is generated from rabbits immunized with a KLH conjugated synthetic peptide between 63-92 amino acids from the Central region of human CD7.

Dilution

WB~~1:1000

E~~Use at an assay dependent concentration.

Format

Purified polyclonal antibody supplied in PBS with 0.09% (W/V) sodium azide. This antibody is purified through a protein A column, followed by peptide affinity purification.

Storage

Maintain refrigerated at 2-8°C for up to 2 weeks. For long term storage store at -20°C in small aliquots to prevent freeze-thaw cycles.

Precautions

CD7 Antibody (Center) is for research use only and not for use in diagnostic or therapeutic procedures.

CD7 Antibody (Center) - Protein Information**Name** CD7**Function** Transmembrane glycoprotein expressed by T-cells and natural killer (NK) cells and their

precursors (PubMed:[7506726](#)). Plays a costimulatory role in T-cell activation upon binding to its ligand K12/SECTM1 (PubMed:[10652336](#)). In turn, mediates the production of cytokines such as IL-2 (PubMed:[1709867](#)). On resting NK-cells, CD7 activation results in a significant induction of interferon-gamma levels (PubMed:[7506726](#)).

Cellular Location

Membrane; Single-pass type I membrane protein.

Tissue Location

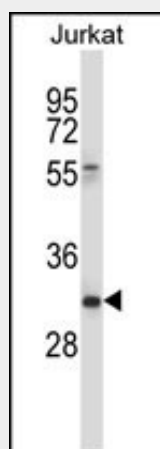
Expressed on T-cells and natural killer (NK) cells and their precursors.

CD7 Antibody (Center) - Protocols

Provided below are standard protocols that you may find useful for product applications.

- [Western Blot](#)
- [Blocking Peptides](#)
- [Dot Blot](#)
- [Immunohistochemistry](#)
- [Immunofluorescence](#)
- [Immunoprecipitation](#)
- [Flow Cytometry](#)
- [Cell Culture](#)

CD7 Antibody (Center) - Images



CD7 Antibody (Center) (Cat. #AP13714c) western blot analysis in Jurkat cell line lysates (35ug/lane). This demonstrates the CD7 antibody detected the CD7 protein (arrow).

CD7 Antibody (Center) - Background

This gene encodes a transmembrane protein which is a member of the immunoglobulin superfamily. This protein is found on thymocytes and mature T cells. It plays an essential role in T-cell interactions and also in T-cell/B-cell interaction during early lymphoid development.

CD7 Antibody (Center) - References

Rohrs, S., et al. J Hematol Oncol 3, 15 (2010) :

Rogers, S.L., et al. Mol. Cancer 9, 41 (2010) :
Koh, H.S., et al. Mol. Cells 28(6):553-558(2009)
Yoo, E.H., et al. Korean J Lab Med 29(6):491-496(2009)
SundarRaj, S., et al. Mol. Immunol. 46(16):3411-3419(2009)