

PRSS2 Antibody (Center)
Affinity Purified Rabbit Polyclonal Antibody (Pab)
Catalog # AP13719C**Specification**

PRSS2 Antibody (Center) - Product Information

Application	IHC-P, WB,E
Primary Accession	P07478
Other Accession	NP_002761.1
Reactivity	Human
Host	Rabbit
Clonality	Polyclonal
Isotype	Rabbit IgG
Calculated MW	26488
Antigen Region	80-108

PRSS2 Antibody (Center) - Additional Information**Gene ID** 5645**Other Names**

Trypsin-2, Anionic trypsinogen, Serine protease 2, Trypsin II, PRSS2, TRY2, TRYP2

Target/Specificity

This PRSS2 antibody is generated from rabbits immunized with a KLH conjugated synthetic peptide between 80-108 amino acids from the Central region of human PRSS2.

Dilution

IHC-P~~1:10~50

WB~~1:1000

E~~Use at an assay dependent concentration.

Format

Purified polyclonal antibody supplied in PBS with 0.09% (W/V) sodium azide. This antibody is purified through a protein A column, followed by peptide affinity purification.

Storage

Maintain refrigerated at 2-8°C for up to 2 weeks. For long term storage store at -20°C in small aliquots to prevent freeze-thaw cycles.

Precautions

PRSS2 Antibody (Center) is for research use only and not for use in diagnostic or therapeutic procedures.

PRSS2 Antibody (Center) - Protein Information**Name** PRSS2

Synonyms TRY2, TRYP2

Function In the ileum, may be involved in defensin processing, including DEFA5.

Cellular Location

Secreted, extracellular space.

Tissue Location

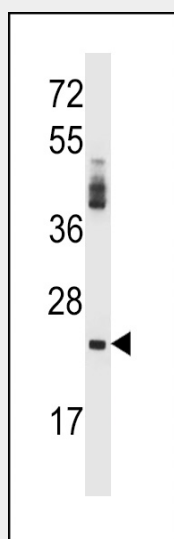
Expressed in Paneth cells, at the base of small intestinal crypts.

PRSS2 Antibody (Center) - Protocols

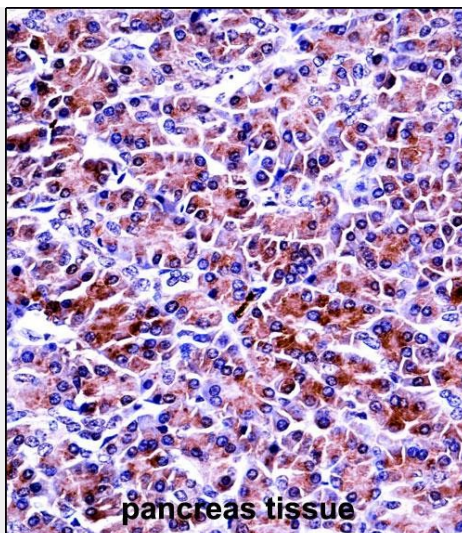
Provided below are standard protocols that you may find useful for product applications.

- [Western Blot](#)
- [Blocking Peptides](#)
- [Dot Blot](#)
- [Immunohistochemistry](#)
- [Immunofluorescence](#)
- [Immunoprecipitation](#)
- [Flow Cytometry](#)
- [Cell Culture](#)

PRSS2 Antibody (Center) - Images



PRSS2 Antibody (Center) (Cat. #AP13719c) western blot analysis in NCI-H292 cell line lysates (35ug/lane). This demonstrates the PRSS2 antibody detected the PRSS2 protein (arrow).



PRSS2 Antibody (Center) (AP13719c) immunohistochemistry analysis in formalin fixed and paraffin embedded human pancreas tissue followed by peroxidase conjugation of the secondary antibody and DAB staining. This data demonstrates the use of PRSS2 Antibody (Center) for immunohistochemistry. Clinical relevance has not been evaluated.

PRSS2 Antibody (Center) - Background

This gene encodes a trypsinogen, which is a member of the trypsin family of serine proteases. This enzyme is secreted by the pancreas and cleaved to its active form in the small intestine. It is active on peptide linkages involving the carboxyl group of lysine or arginine. This gene and several other trypsinogen genes are localized to the T cell receptor beta locus on chromosome 7.

PRSS2 Antibody (Center) - References

Felderbauer, P., et al. Exp. Clin. Endocrinol. Diabetes (2010) In press :
Gao, J., et al. Oncol. Rep. 23(6):1683-1692(2010)
Cevik, Y., et al. Ulus Travma Acil Cerrahi Derg 16(2):125-129(2010)
Andersen, A.M., et al. Pancreas 39(1):26-30(2010)
Johansen, D., et al. Pancreatology 10 (2-3), 229-237 (2010) :