

MMP11 Antibody (C-term)
Affinity Purified Rabbit Polyclonal Antibody (Pab)
Catalog # AP13729B**Specification**

MMP11 Antibody (C-term) - Product Information

Application	IHC-P, WB,E
Primary Accession	P24347
Other Accession	NP_005931.2
Reactivity	Human
Host	Rabbit
Clonality	Polyclonal
Isotype	Rabbit IgG
Calculated MW	54590
Antigen Region	399-428

MMP11 Antibody (C-term) - Additional Information**Gene ID** 4320**Other Names**

Stromelysin-3, SL-3, ST3, 3424-, Matrix metalloproteinase-11, MMP-11, MMP11, STMY3

Target/Specificity

This MMP11 antibody is generated from rabbits immunized with a KLH conjugated synthetic peptide between 399-428 amino acids from the C-terminal region of human MMP11.

Dilution

IHC-P~~1:10~50

WB~~1:1000

E~~Use at an assay dependent concentration.

Format

Purified polyclonal antibody supplied in PBS with 0.09% (W/V) sodium azide. This antibody is purified through a protein A column, followed by peptide affinity purification.

Storage

Maintain refrigerated at 2-8°C for up to 2 weeks. For long term storage store at -20°C in small aliquots to prevent freeze-thaw cycles.

Precautions

MMP11 Antibody (C-term) is for research use only and not for use in diagnostic or therapeutic procedures.

MMP11 Antibody (C-term) - Protein Information**Name** MMP11

Synonyms STMY3

Function May play an important role in the progression of epithelial malignancies.

Cellular Location

Secreted, extracellular space, extracellular matrix

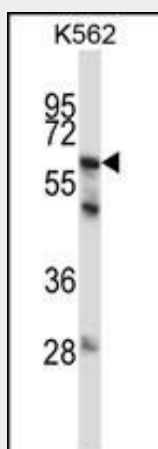
Tissue Location

Specifically expressed in stromal cells of breast carcinomas

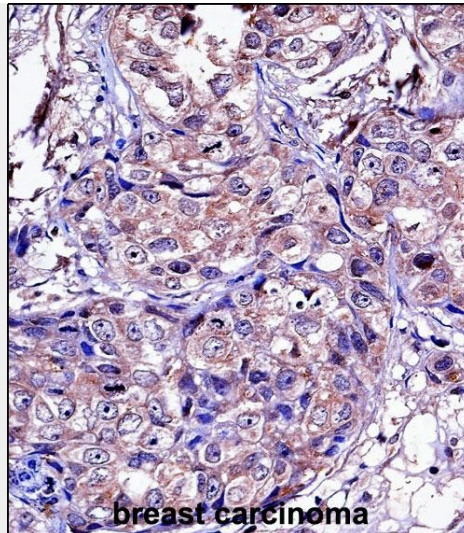
MMP11 Antibody (C-term) - Protocols

Provided below are standard protocols that you may find useful for product applications.

- [Western Blot](#)
- [Blocking Peptides](#)
- [Dot Blot](#)
- [Immunohistochemistry](#)
- [Immunofluorescence](#)
- [Immunoprecipitation](#)
- [Flow Cytometry](#)
- [Cell Culture](#)

MMP11 Antibody (C-term) - Images

MMP11 Antibody (C-term) (Cat. #AP13729b) western blot analysis in K562 cell line lysates (35ug/lane). This demonstrates the MMP11 antibody detected the MMP11 protein (arrow).



MMP11 Antibody (C-term) (AP13729b) immunohistochemistry analysis in formalin fixed and paraffin embedded human breast carcinoma followed by peroxidase conjugation of the secondary antibody and DAB staining. This data demonstrates the use of MMP11 Antibody (C-term) for immunohistochemistry. Clinical relevance has not been evaluated.

MMP11 Antibody (C-term) - Background

Proteins of the matrix metalloproteinase (MMP) family are involved in the breakdown of extracellular matrix in normal physiological processes, such as embryonic development, reproduction, and tissue remodeling, as well as in disease processes, such as arthritis and metastasis. Most MMP's are secreted as inactive proproteins which are activated when cleaved by extracellular proteinases. However, the enzyme encoded by this gene is activated intracellularly by furin within the constitutive secretory pathway. Also in contrast to other MMP's, this enzyme cleaves alpha 1-proteinase inhibitor but weakly degrades structural proteins of the extracellular matrix.

MMP11 Antibody (C-term) - References

Romero, R., et al. Am. J. Obstet. Gynecol. 203 (4), 361 (2010) :
Bailey, S.D., et al. Diabetes Care 33(10):2250-2253(2010)
Nalpas, B., et al. Gut 59(8):1120-1126(2010)
Ban, J.Y., et al. Life Sci. 86 (19-20), 756-759 (2010) :
Romero, R., et al. Am. J. Obstet. Gynecol. 202 (5), 431 (2010) :