

ARHGDIB Antibody (C-term)
Affinity Purified Rabbit Polyclonal Antibody (Pab)
Catalog # AP13743b**Specification**

ARHGDIB Antibody (C-term) - Product Information

Application	IHC-P, WB,E
Primary Accession	P52566
Other Accession	NP_001166.3
Reactivity	Human
Host	Rabbit
Clonality	Polyclonal
Isotype	Rabbit IgG
Antigen Region	160-188

ARHGDIB Antibody (C-term) - Additional Information**Gene ID** 397**Other Names**

Rho GDP-dissociation inhibitor 2, Rho GDI 2, Ly-GDI, Rho-GDI beta, ARHGDIB, GDIA2, GDID4, RAP1GN1

Target/Specificity

This ARHGDIB antibody is generated from rabbits immunized with a KLH conjugated synthetic peptide between 160-188 amino acids from the C-terminal region of human ARHGDIB.

Dilution

IHC-P~~1:10~50

WB~~1:1000

E~~Use at an assay dependent concentration.

Format

Purified polyclonal antibody supplied in PBS with 0.09% (W/V) sodium azide. This antibody is purified through a protein A column, followed by peptide affinity purification.

Storage

Maintain refrigerated at 2-8°C for up to 2 weeks. For long term storage store at -20°C in small aliquots to prevent freeze-thaw cycles.

Precautions

ARHGDIB Antibody (C-term) is for research use only and not for use in diagnostic or therapeutic procedures.

ARHGDIB Antibody (C-term) - Protein Information**Name** ARHGDIB

Synonyms GDIA2, GDID4, RAP1GN1

Function Regulates the GDP/GTP exchange reaction of the Rho proteins by inhibiting the dissociation of GDP from them, and the subsequent binding of GTP to them (PubMed:[7512369](#), PubMed:[8356058](#)). Regulates reorganization of the actin cytoskeleton mediated by Rho family members (PubMed:[8262133](#)).

Cellular Location
Cytoplasm, cytosol.

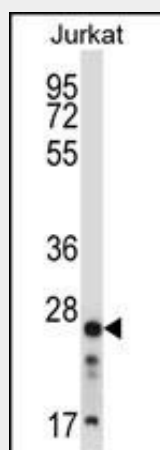
Tissue Location
Detected in bone marrow, thymus and spleen.

ARHGDIB Antibody (C-term) - Protocols

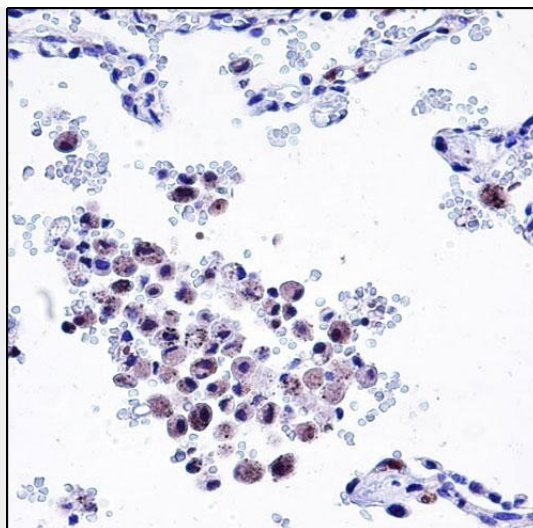
Provided below are standard protocols that you may find useful for product applications.

- [Western Blot](#)
- [Blocking Peptides](#)
- [Dot Blot](#)
- [Immunohistochemistry](#)
- [Immunofluorescence](#)
- [Immunoprecipitation](#)
- [Flow Cytometry](#)
- [Cell Culture](#)

ARHGDIB Antibody (C-term) - Images



ARHGDIB Antibody (C-term) (Cat. #AP13743b) western blot analysis in Jurkat cell line lysates (35ug/lane). This demonstrates the ARHGDIB antibody detected the ARHGDIB protein (arrow).



ARHGDIB Antibody (C-term) (Cat. #AP13743b) immunohistochemistry analysis in formalin fixed and paraffin embedded human lung tissue followed by peroxidase conjugation of the secondary antibody and DAB staining. This data demonstrates the use of ARHGDIB Antibody (C-term) for immunohistochemistry. Clinical relevance has not been evaluated.

ARHGDIB Antibody (C-term) - Background

Members of the Rho (or ARH) protein family (see MIM 165390) and other Ras-related small GTP-binding proteins (see MIM 179520) are involved in diverse cellular events, including cell signaling, proliferation, cytoskeletal organization, and secretion. The GTP-binding proteins are active only in the GTP-bound state. At least 3 classes of proteins tightly regulate cycling between the GTP-bound and GDP-bound states: GTPase-activating proteins (GAPs), guanine nucleotide-releasing factors (GRFs), and GDP-dissociation inhibitors (GDIs). The GDIs, including ARHGDIB, decrease the rate of GDP dissociation from Ras-like GTPases (summary by Scherle et al., 1993 [PubMed 8356058]).

ARHGDIB Antibody (C-term) - References

Niu, H., et al. Oncol. Rep. 24(2):465-471(2010)
Zhen, H., et al. Int. J. Gynecol. Cancer 20(3):316-322(2010)
Guey, L.T., et al. Eur. Urol. 57(2):283-292(2010)
Said, N., et al. Cancer Metastasis Rev. 28 (3-4), 327-333 (2009) :
Hosgood, H.D. III, et al. Respir Med 103(12):1866-1870(2009)

ARHGDIB Antibody (C-term) - Citations

- [RhoGDI \$\beta\$ Inhibits BMP4-induced Adipocyte Lineage Commitment and Favors Smooth Muscle-like Cell Differentiation.](#)