

**CDH16 Antibody (C-term)**  
**Affinity Purified Rabbit Polyclonal Antibody (Pab)**  
**Catalog # AP13746b****Specification**

---

**CDH16 Antibody (C-term) - Product Information**

Application	WB,E
Primary Accession	<a href="#">O75309</a>
Other Accession	<a href="#">NP_004053.1</a>
Reactivity	Human
Host	Rabbit
Clonality	Polyclonal
Isotype	Rabbit IgG
Calculated MW	89923
Antigen Region	796-824

**CDH16 Antibody (C-term) - Additional Information****Gene ID** 1014**Other Names**

Cadherin-16, Kidney-specific cadherin, Ksp-cadherin, CDH16

**Target/Specificity**

This CDH16 antibody is generated from rabbits immunized with a KLH conjugated synthetic peptide between 796-824 amino acids from the C-terminal region of human CDH16.

**Dilution**

WB~~1:1000

E~~Use at an assay dependent concentration.

**Format**

Purified polyclonal antibody supplied in PBS with 0.09% (W/V) sodium azide. This antibody is purified through a protein A column, followed by peptide affinity purification.

**Storage**

Maintain refrigerated at 2-8°C for up to 2 weeks. For long term storage store at -20°C in small aliquots to prevent freeze-thaw cycles.

**Precautions**

CDH16 Antibody (C-term) is for research use only and not for use in diagnostic or therapeutic procedures.

**CDH16 Antibody (C-term) - Protein Information****Name** CDH16**Function** Cadherins are calcium-dependent cell adhesion proteins. They preferentially interact

with themselves in a homophilic manner in connecting cells; cadherins may thus contribute to the sorting of heterogeneous cell types.

**Cellular Location**

Cell membrane; Single-pass type I membrane protein

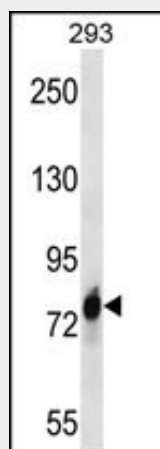
**Tissue Location**

Kidney specific.

**CDH16 Antibody (C-term) - Protocols**

Provided below are standard protocols that you may find useful for product applications.

- [Western Blot](#)
- [Blocking Peptides](#)
- [Dot Blot](#)
- [Immunohistochemistry](#)
- [Immunofluorescence](#)
- [Immunoprecipitation](#)
- [Flow Cytometry](#)
- [Cell Culture](#)

**CDH16 Antibody (C-term) - Images**

CDH16 Antibody (C-term) (Cat. #AP13746b) western blot analysis in 293 cell line lysates (35ug/lane). This demonstrates the CDH16 antibody detected the CDH16 protein (arrow).

**CDH16 Antibody (C-term) - Background**

This gene is a member of the cadherin superfamily, genes encoding calcium-dependent, membrane-associated glycoproteins. Mapped to a previously identified cluster of cadherin genes on chromosome 16q22.1, the gene localizes with superfamily members CDH1, CDH3, CDH5, CDH8 and CDH11. The protein consists of an extracellular domain containing 6 cadherin domains, a transmembrane region and a truncated cytoplasmic domain but lacks the prosequence and tripeptide HAV adhesion recognition sequence typical of most classical cadherins. Expression is exclusively in kidney, where the protein functions as the principal mediator of homotypic cellular recognition, playing a role in the morphogenic direction of tissue

development.

#### **CDH16 Antibody (C-term) - References**

Thedieck, C., et al. J. Mol. Biol. 378(1):145-153(2008)  
Kuehn, A., et al. Am. J. Surg. Pathol. 31(10):1528-1533(2007)  
Thedieck, C., et al. Br. J. Cancer 92(11):2010-2017(2005)  
Hishikawa, K., et al. Biochem. Biophys. Res. Commun. 328(1):288-291(2005)  
Wendeler, M.W., et al. Exp. Cell Res. 294(2):345-355(2004)