

**CSK Antibody (N-term)**  
**Affinity Purified Rabbit Polyclonal Antibody (Pab)**  
**Catalog # AP13748a****Specification**

---

**CSK Antibody (N-term) - Product Information**

Application	WB,E
Primary Accession	<a href="#">P41240</a>
Other Accession	<a href="#">P32577</a> , <a href="#">P41241</a> , <a href="#">P41239</a> , <a href="#">Q0VBZ0</a> , <a href="#">NP_001120662.1</a> , <a href="#">NP_004374.1</a>
Reactivity	Human
Predicted	Bovine, Chicken, Mouse, Rat
Host	Rabbit
Clonality	Polyclonal
Isotype	Rabbit IgG
Calculated MW	50704
Antigen Region	33-61

**CSK Antibody (N-term) - Additional Information****Gene ID** 1445**Other Names**

Tyrosine-protein kinase CSK, C-Src kinase, Protein-tyrosine kinase CYL, CSK

**Target/Specificity**

This CSK antibody is generated from rabbits immunized with a KLH conjugated synthetic peptide between 33-61 amino acids from the N-terminal region of human CSK.

**Dilution**

WB~~1:1000

E~~Use at an assay dependent concentration.

**Format**

Purified polyclonal antibody supplied in PBS with 0.09% (W/V) sodium azide. This antibody is purified through a protein A column, followed by peptide affinity purification.

**Storage**

Maintain refrigerated at 2-8°C for up to 2 weeks. For long term storage store at -20°C in small aliquots to prevent freeze-thaw cycles.

**Precautions**

CSK Antibody (N-term) is for research use only and not for use in diagnostic or therapeutic procedures.

**CSK Antibody (N-term) - Protein Information****Name** CSK

**Function** Non-receptor tyrosine-protein kinase that plays an important role in the regulation of cell growth, differentiation, migration and immune response. Phosphorylates tyrosine residues located in the C- terminal tails of Src-family kinases (SFKs) including LCK, SRC, HCK, FYN, LYN, CSK or YES1. Upon tail phosphorylation, Src-family members engage in intramolecular interactions between the phosphotyrosine tail and the SH2 domain that result in an inactive conformation. To inhibit SFKs, CSK is recruited to the plasma membrane via binding to transmembrane proteins or adapter proteins located near the plasma membrane. Suppresses signaling by various surface receptors, including T-cell receptor (TCR) and B-cell receptor (BCR) by phosphorylating and maintaining inactive several positive effectors such as FYN or LCK.

#### **Cellular Location**

Cytoplasm. Cell membrane. Note=Mainly cytoplasmic, also present in lipid rafts

#### **Tissue Location**

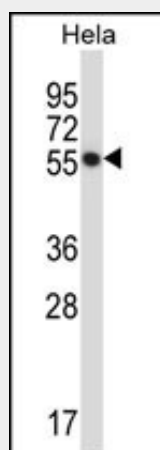
Expressed in lung and macrophages.

### **CSK Antibody (N-term) - Protocols**

Provided below are standard protocols that you may find useful for product applications.

- [Western Blot](#)
- [Blocking Peptides](#)
- [Dot Blot](#)
- [Immunohistochemistry](#)
- [Immunofluorescence](#)
- [Immunoprecipitation](#)
- [Flow Cytometry](#)
- [Cell Culture](#)

### **CSK Antibody (N-term) - Images**



CSK Antibody (N-term) (Cat. #AP13748a) western blot analysis in HeLa cell line lysates (35ug/lane). This demonstrates the CSK antibody detected the CSK protein (arrow).

### **CSK Antibody (N-term) - Background**

Specifically phosphorylates 'Tyr-504' on LCK, which acts as a negative regulatory site. Can also act on the LYN and FYN kinases.

### **CSK Antibody (N-term) - References**

Niu, W., et al. Clin. Chim. Acta 411 (19-20), 1491-1495 (2010) :

Bailey, S.D., et al. Diabetes Care 33(10):2250-2253(2010)

Liu, C.Y., et al. Carcinogenesis 31(7):1259-1263(2010)

Mikkola, E.T., et al. J. Mol. Biol. 399(4):618-627(2010)

Takeuchi, F., et al. Circulation 121(21):2302-2309(2010)

**CSK Antibody (N-term) - Citations**

- [Overexpression of Csk-binding protein/phosphoprotein associated with glycosphingolipid-enriched microdomains induces cluster of differentiation 59-mediated apoptosis in Jurkat cells.](#)