

**SILV Antibody (Center)**  
**Affinity Purified Rabbit Polyclonal Antibody (Pab)**  
**Catalog # AP13753c**

**Specification**

---

**SILV Antibody (Center) - Product Information**

Application	WB,E
Primary Accession	<a href="#">P40967</a>
Other Accession	<a href="#">NP_008859.1</a>
Reactivity	Human
Host	Rabbit
Clonality	Polyclonal
Isotype	Rabbit IgG
Calculated MW	70255
Antigen Region	412-440

**SILV Antibody (Center) - Additional Information**

**Gene ID** 6490

**Other Names**

Melanocyte protein PMEL, ME20-M, ME20M, Melanocyte protein Pmel 17, Melanocytes lineage-specific antigen GP100, Melanoma-associated ME20 antigen, P1, P100, Premelanosome protein, Silver locus protein homolog, M-alpha, 95 kDa melanocyte-specific secreted glycoprotein, P26, Secreted melanoma-associated ME20 antigen, ME20-S, ME20S, M-beta, PMEL, D12S53E, PMEL17, SILV

**Target/Specificity**

This SILV antibody is generated from rabbits immunized with a KLH conjugated synthetic peptide between 412-440 amino acids from the Central region of human SILV.

**Dilution**

WB~~1:1000

E~~Use at an assay dependent concentration.

**Format**

Purified polyclonal antibody supplied in PBS with 0.09% (W/V) sodium azide. This antibody is purified through a protein A column, followed by peptide affinity purification.

**Storage**

Maintain refrigerated at 2-8°C for up to 2 weeks. For long term storage store at -20°C in small aliquots to prevent freeze-thaw cycles.

**Precautions**

SILV Antibody (Center) is for research use only and not for use in diagnostic or therapeutic procedures.

**SILV Antibody (Center) - Protein Information**

**Name** PMEL**Synonyms** D12S53E, PMEL17, SILV

**Function** Forms physiological amyloids that play a central role in melanosome morphogenesis and pigmentation. The maturation of unpigmented premelanosomes from stage I to II is marked by assembly of processed amyloidogenic fragments into parallel fibrillar sheets, which elongate the vesicle into a striated ellipsoidal shape. In pigmented stage III and IV melanosomes, the amyloid matrix serves as a platform where eumelanin precursors accumulate at high local concentrations for pigment formation. May prevent pigmentation-associated toxicity by sequestering toxic reaction intermediates of eumelanin biosynthesis pathway.

**Cellular Location**

Endoplasmic reticulum membrane; Single-pass type I membrane protein. Golgi apparatus, cis-Golgi network membrane; Single-pass type I membrane protein. Endosome, multivesicular body. Melanosome Extracellular vesicle. Secreted. Note=Identified by mass spectrometry in melanosome fractions from stage I to stage IV (PubMed:17081065) Localizes predominantly to intraluminal vesicles (ILVs) within multivesicular bodies. Associates with ILVs found within the lumen of premelanosomes and melanosomes and particularly in compartments that serve as precursors to the striated stage II premelanosomes (PubMed:11694580, PubMed:12643545). Sorted to stage I melanosomes following its processing in the ER and cis-Golgi (PubMed:15096515) Transiently expressed at the cell surface before targeting to early melanosomes (PubMed:16760433, PubMed:30988362). Colocalizes with BACE2 in stage I and II melanosomes (PubMed:23754390). Colocalizes with CD63 and APOE at exosomes and in intraluminal vesicles within multivesicular endosomes (PubMed:21962903, PubMed:26387950)

**Tissue Location**

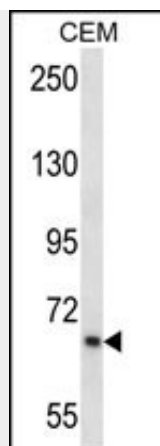
Normally expressed at low levels in quiescent adult melanocytes but overexpressed by proliferating neonatal melanocytes and during tumor growth. Overexpressed in melanomas. Some expression was found in dysplastic nevi.

**SILV Antibody (Center) - Protocols**

Provided below are standard protocols that you may find useful for product applications.

- [Western Blot](#)
- [Blocking Peptides](#)
- [Dot Blot](#)
- [Immunohistochemistry](#)
- [Immunofluorescence](#)
- [Immunoprecipitation](#)
- [Flow Cytometry](#)
- [Cell Culture](#)

**SILV Antibody (Center) - Images**



SILV Antibody (Center) (Cat. #AP13753c) western blot analysis in CEM cell line lysates (35ug/lane). This demonstrates the SILV antibody detected the SILV protein (arrow).

#### **SILV Antibody (Center) - Background**

SILV plays a central role in the biogenesis of melanosomes. Involved in the maturation of melanosomes from stage I to II. The transition from stage I melanosomes to stage II melanosomes involves an elongation of the vesicle, and the appearance within of distinct fibrillar structures. Release of the soluble form, ME20-S, could protect tumor cells from antibody mediated immunity.

#### **SILV Antibody (Center) - References**

- Leonhardt, R.M., et al. J. Biol. Chem. 285(21):16166-16183(2010)
- Hoashi, T., et al. FASEB J. 24(3):916-930(2010)
- Watt, B., et al. J. Biol. Chem. 284(51):35543-35555(2009)
- McGlinchey, R.P., et al. Proc. Natl. Acad. Sci. U.S.A. 106(33):13731-13736(2009)
- Kummer, M.P., et al. J. Biol. Chem. 284(4):2296-2306(2009)