

RANBP3L Antibody (Center)
Affinity Purified Rabbit Polyclonal Antibody (Pab)
Catalog # AP13762c**Specification**

RANBP3L Antibody (Center) - Product Information

Application	WB, IHC-P,E
Primary Accession	Q86VV4
Other Accession	NP_659437.3 , NP_001154901.1
Reactivity	Human
Host	Rabbit
Clonality	Polyclonal
Isotype	Rabbit IgG
Calculated MW	52211
Antigen Region	137-165

RANBP3L Antibody (Center) - Additional Information**Gene ID** 202151**Other Names**

Ran-binding protein 3-like, RANBP3L

Target/Specificity

This RANBP3L antibody is generated from rabbits immunized with a KLH conjugated synthetic peptide between 137-165 amino acids from the Central region of human RANBP3L.

Dilution

WB~~1:1000

IHC-P~~1:10~50

Format

Purified polyclonal antibody supplied in PBS with 0.09% (W/V) sodium azide. This antibody is purified through a protein A column, followed by peptide affinity purification.

Storage

Maintain refrigerated at 2-8°C for up to 2 weeks. For long term storage store at -20°C in small aliquots to prevent freeze-thaw cycles.

Precautions

RANBP3L Antibody (Center) is for research use only and not for use in diagnostic or therapeutic procedures.

RANBP3L Antibody (Center) - Protein Information**Name** RANBP3L**Function** Nuclear export factor for BMP-specific SMAD1/5/8 that plays a critical role in terminating

BMP signaling and regulating mesenchymal stem cell differentiation by blocking osteoblast differentiation to promote myogenic differentiation. Directly recognizes dephosphorylated SMAD1/5/8 and mediates their nuclear export in a Ran-dependent manner.

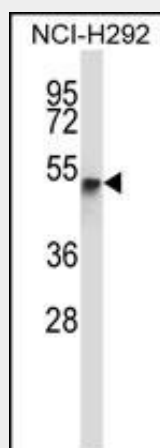
Cellular Location

Nucleus. Cytoplasm

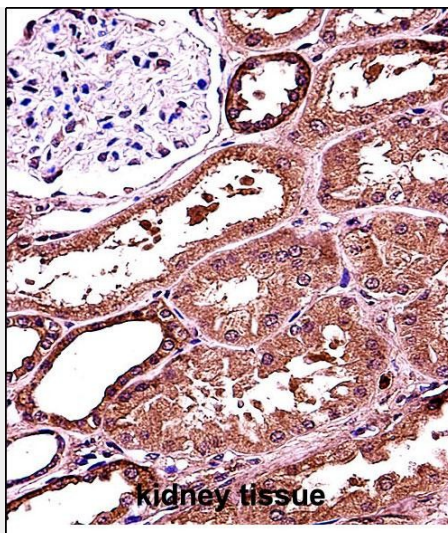
RANBP3L Antibody (Center) - Protocols

Provided below are standard protocols that you may find useful for product applications.

- [Western Blot](#)
- [Blocking Peptides](#)
- [Dot Blot](#)
- [Immunohistochemistry](#)
- [Immunofluorescence](#)
- [Immunoprecipitation](#)
- [Flow Cytometry](#)
- [Cell Culture](#)

RANBP3L Antibody (Center) - Images

RANBP3L Antibody (Center) (Cat. #AP13762c) western blot analysis in NCI-H292 cell line lysates (35ug/lane). This demonstrates the RANBP3L antibody detected the RANBP3L protein (arrow).



RANBP3L Antibody (Center) (Cat. #AP13762c) immunohistochemistry analysis in formalin fixed and paraffin embedded human kidney tissue followed by peroxidase conjugation of the secondary antibody and DAB staining. This data demonstrates the use of RANBP3L Antibody (Center) for immunohistochemistry. Clinical relevance has not been evaluated.

RANBP3L Antibody (Center) - Background

The function of this protein remains unknown.