

CTAG2 Antibody (Center)
Affinity Purified Rabbit Polyclonal Antibody (Pab)
Catalog # AP13767c**Specification**

CTAG2 Antibody (Center) - Product Information

Application	WB, IHC-P,E
Primary Accession	O75638
Other Accession	NP_758965.1 , NP_066274.1
Reactivity	Human
Host	Rabbit
Clonality	Polyclonal
Isotype	Rabbit IgG
Antigen Region	122-149

CTAG2 Antibody (Center) - Additional Information**Gene ID** 30848**Other Names**

Cancer/testis antigen 2, CT2, Autoimmunogenic cancer/testis antigen NY-ESO-2, Cancer/testis antigen 62, CT62, L antigen family member 1, LAGE-1, CTAG2, ESO2, LAGE1

Target/Specificity

This CTAG2 antibody is generated from rabbits immunized with a KLH conjugated synthetic peptide between 122-149 amino acids from the Central region of human CTAG2.

Dilution

WB~~1:1000

IHC-P~~1:10~50

E~~Use at an assay dependent concentration.

Format

Purified polyclonal antibody supplied in PBS with 0.09% (W/V) sodium azide. This antibody is purified through a protein A column, followed by peptide affinity purification.

Storage

Maintain refrigerated at 2-8°C for up to 2 weeks. For long term storage store at -20°C in small aliquots to prevent freeze-thaw cycles.

Precautions

CTAG2 Antibody (Center) is for research use only and not for use in diagnostic or therapeutic procedures.

CTAG2 Antibody (Center) - Protein Information**Name** CTAG2

Synonyms ESO2, LAGE1

Tissue Location

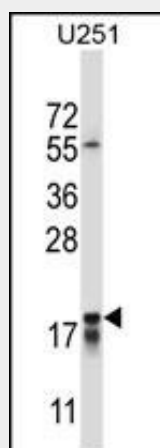
Testis and very low level in placenta and in some uterus samples. Observed in 25-50% of tumor samples of melanomas, non- small-cell lung carcinomas, bladder, prostate and head and neck cancers

CTAG2 Antibody (Center) - Protocols

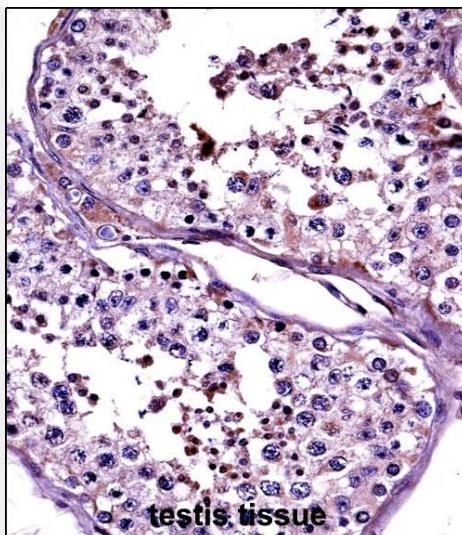
Provided below are standard protocols that you may find useful for product applications.

- [Western Blot](#)
- [Blocking Peptides](#)
- [Dot Blot](#)
- [Immunohistochemistry](#)
- [Immunofluorescence](#)
- [Immunoprecipitation](#)
- [Flow Cytometry](#)
- [Cell Culture](#)

CTAG2 Antibody (Center) - Images



CTAG2 Antibody (Center) (Cat. #AP13767c) western blot analysis in U251 cell line lysates (35ug/lane). This demonstrates the CTAG2 antibody detected the CTAG2 protein (arrow).



CTAG2 Antibody (Center) (AP13767c) immunohistochemistry analysis in formalin fixed and paraffin embedded human testis tissue followed by peroxidase conjugation of the secondary antibody and DAB staining. This data demonstrates the use of CTAG2 Antibody (Center) for immunohistochemistry. Clinical relevance has not been evaluated.

CTAG2 Antibody (Center) - Background

This gene encodes an autoimmunogenic tumor antigen that belongs to the ESO/LAGE family of cancer-testis antigens. This protein is expressed in a wide array of cancers including melanoma, breast cancer, bladder cancer and prostate cancer. This protein is also expressed in normal testis tissue. An alternative open reading frame product of this gene has been described in PMID 10399963. This alternate protein, termed CAMEL, is a tumor antigen that is recognized by melanoma-specific cytotoxic T-lymphocytes. Alternate splicing results in multiple transcript variants. [provided by RefSeq].

CTAG2 Antibody (Center) - References

Wang, X.Y., et al. *Oncol. Rep.* 21(3):713-719(2009)
Shao, Y., et al. *J. Cancer Res. Clin. Oncol.* 134(4):495-502(2008)
Andrade, V.C., et al. *Cancer Immun.* 8, 2 (2008) :
Kan, T., et al. *Oncology* 70(1):25-33(2006)
Scanlan, M.J., et al. *Immunol. Rev.* 188, 22-32 (2002) :