

**CELA3B Antibody (N-term)**  
**Affinity Purified Rabbit Polyclonal Antibody (Pab)**  
**Catalog # AP13770a**

**Specification**

---

**CELA3B Antibody (N-term) - Product Information**

Application	IHC-P, WB,E
Primary Accession	<a href="#">P08861</a>
Other Accession	<a href="#">NP_031378.1</a>
Reactivity	Human
Host	Rabbit
Clonality	Polyclonal
Isotype	Rabbit IgG
Antigen Region	70-98

**CELA3B Antibody (N-term) - Additional Information**

**Gene ID** 23436

**Other Names**

Chymotrypsin-like elastase family member 3B, Elastase IIIB, Elastase-3B, Protease E, CELA3B, ELA3B

**Target/Specificity**

This CELA3B antibody is generated from rabbits immunized with a KLH conjugated synthetic peptide between 70-98 amino acids from the N-terminal region of human CELA3B.

**Dilution**

IHC-P~~1:10~50

WB~~1:1000

E~~Use at an assay dependent concentration.

**Format**

Purified polyclonal antibody supplied in PBS with 0.09% (W/V) sodium azide. This antibody is purified through a protein A column, followed by peptide affinity purification.

**Storage**

Maintain refrigerated at 2-8°C for up to 2 weeks. For long term storage store at -20°C in small aliquots to prevent freeze-thaw cycles.

**Precautions**

CELA3B Antibody (N-term) is for research use only and not for use in diagnostic or therapeutic procedures.

**CELA3B Antibody (N-term) - Protein Information**

**Name** CELA3B

**Synonyms** ELA3B

**Function** Efficient protease with alanine specificity but only little elastolytic activity.

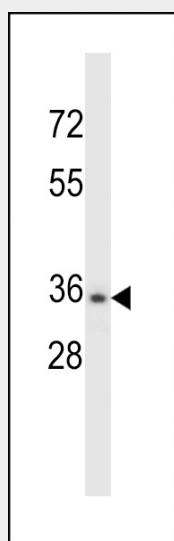
**Tissue Location**

Pancreas. Not detectable in keratinocytes.

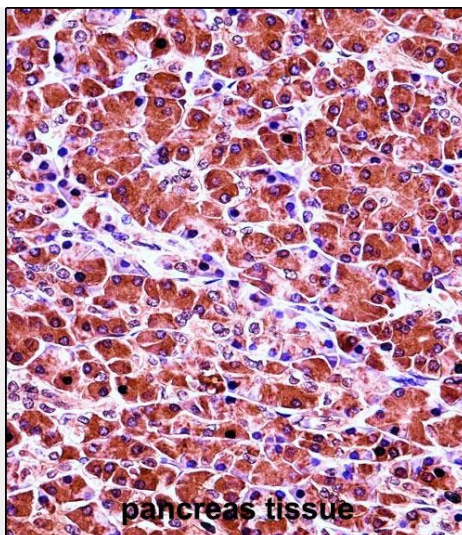
**CELA3B Antibody (N-term) - Protocols**

Provided below are standard protocols that you may find useful for product applications.

- [Western Blot](#)
- [Blocking Peptides](#)
- [Dot Blot](#)
- [Immunohistochemistry](#)
- [Immunofluorescence](#)
- [Immunoprecipitation](#)
- [Flow Cytometry](#)
- [Cell Culture](#)

**CELA3B Antibody (N-term) - Images**

CELA3B Antibody (N-term) (Cat. #AP13770a) western blot analysis in NCI-H460 cell line lysates (35ug/lane). This demonstrates the CELA3B antibody detected the CELA3B protein (arrow).



CELA3B Antibody (N-term) (Cat. #AP13770a) immunohistochemistry analysis in formalin fixed and paraffin embedded human pancreas tissue followed by peroxidase conjugation of the secondary antibody and DAB staining. This data demonstrates the use of CELA3B Antibody (N-term) for immunohistochemistry. Clinical relevance has not been evaluated.

#### **CELA3B Antibody (N-term) - Background**

Elastases form a subfamily of serine proteases that hydrolyze many proteins in addition to elastin. Humans have six elastase genes which encode the structurally similar proteins elastase 1, 2, 2A, 2B, 3A, and 3B. Unlike other elastases, elastase 3B has little elastolytic activity. Like most of the human elastases, elastase 3B is secreted from the pancreas as a zymogen and, like other serine proteases such as trypsin, chymotrypsin and kallikrein, it has a digestive function in the intestine. Elastase 3B preferentially cleaves proteins after alanine residues. Elastase 3B may also function in the intestinal transport and metabolism of cholesterol. Both elastase 3A and elastase 3B have been referred to as protease E and as elastase 1, and excretion of this protein in fecal material is frequently used as a measure of pancreatic function in clinical assays.

#### **CELA3B Antibody (N-term) - References**

Gao, J., et al. *Oncol. Rep.* 23(6):1683-1692(2010)  
Teichmann, J., et al. *Eur. J. Med. Res.* 13(12):563-567(2008)  
Hahn, J.U., et al. *Pancreas* 36(3):274-278(2008)  
Mann, S.T., et al. *Eur. J. Med. Res.* 13(2):68-72(2008)  
Vesterhus, M., et al. *Diabetes Care* 31(2):306-310(2008)