

**NAPSA Antibody (C-term)**  
**Affinity Purified Rabbit Polyclonal Antibody (Pab)**  
**Catalog # AP13772b****Specification**

---

**NAPSA Antibody (C-term) - Product Information**

Application	IHC-P, WB,E
Primary Accession	<a href="#">O96009</a>
Other Accession	<a href="#">NP_004842.1</a>
Reactivity	Human
Host	Rabbit
Clonality	Polyclonal
Isotype	Rabbit IgG
Calculated MW	45387
Antigen Region	368-397

**NAPSA Antibody (C-term) - Additional Information****Gene ID** 9476**Other Names**

Napsin-A, 3423-, Aspartyl protease 4, ASP4, Asp 4, Napsin-1, TA01/TA02, NAPSA, NAP1, NAPA

**Target/Specificity**

This NAPSA antibody is generated from rabbits immunized with a KLH conjugated synthetic peptide between 368-397 amino acids from the C-terminal region of human NAPSA.

**Dilution**

IHC-P~~1:10~50

WB~~1:1000

E~~Use at an assay dependent concentration.

**Format**

Purified polyclonal antibody supplied in PBS with 0.09% (W/V) sodium azide. This antibody is purified through a protein A column, followed by peptide affinity purification.

**Storage**

Maintain refrigerated at 2-8°C for up to 2 weeks. For long term storage store at -20°C in small aliquots to prevent freeze-thaw cycles.

**Precautions**

NAPSA Antibody (C-term) is for research use only and not for use in diagnostic or therapeutic procedures.

**NAPSA Antibody (C-term) - Protein Information****Name** NAPSA

**Synonyms** NAP1, NAPA

**Function** May be involved in processing of pneumocyte surfactant precursors.

**Cellular Location**  
Secreted.

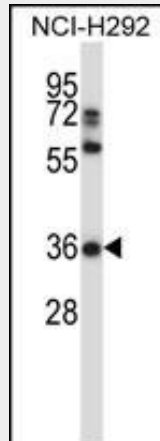
**Tissue Location**  
Expressed predominantly in adult lung (type II pneumocytes) and kidney and in fetal lung. Low levels in adult spleen and very low levels in peripheral blood leukocytes

### **NAPSA Antibody (C-term) - Protocols**

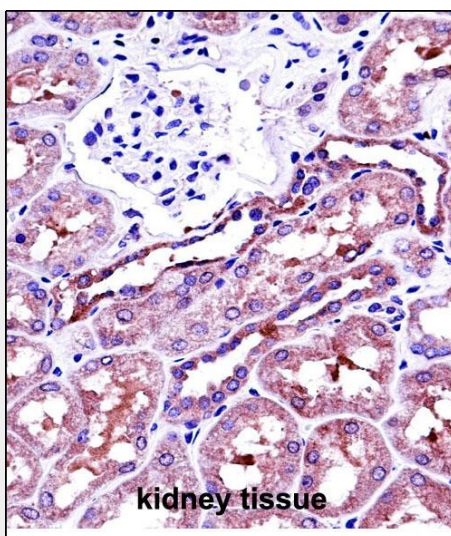
Provided below are standard protocols that you may find useful for product applications.

- [Western Blot](#)
- [Blocking Peptides](#)
- [Dot Blot](#)
- [Immunohistochemistry](#)
- [Immunofluorescence](#)
- [Immunoprecipitation](#)
- [Flow Cytometry](#)
- [Cell Culture](#)

### **NAPSA Antibody (C-term) - Images**



NAPSA Antibody (C-term) (Cat. #AP13772b) western blot analysis in NCI-H292 cell line lysates (35ug/lane). This demonstrates the NAPSA antibody detected the NAPSA protein (arrow).



NAPSA Antibody (C-term) (Cat. #AP13772b) immunohistochemistry analysis in formalin fixed and paraffin embedded human kidney tissue followed by peroxidase conjugation of the secondary antibody and DAB staining. This data demonstrates the use of NAPSA Antibody (C-term) for immunohistochemistry. Clinical relevance has not been evaluated.

#### **NAPSA Antibody (C-term) - Background**

The activation peptides of aspartic proteinases plays role as inhibitors of the active site. These peptide segments, or pro-parts, are deemed important for correct folding, targeting, and control of the activation of aspartic proteinase zymogens. The pronapsin A gene is expressed predominantly in lung and kidney. Its translation product is predicted to be a fully functional, glycosylated aspartic proteinase precursor containing an RGD motif and an additional 18 residues at its C-terminus. [provided by RefSeq].

#### **NAPSA Antibody (C-term) - References**

Bishop, J.A., et al. Hum. Pathol. 41(1):20-25(2010)  
Woischnik, M., et al. Eur. Respir. J. 31(6):1197-1204(2008)  
Ueno, T., et al. Lab. Invest. 88(3):256-263(2008)  
Innocenti, M., et al. Nat. Cell Biol. 6(4):319-327(2004)  
Brasch, F., et al. J. Biol. Chem. 278(49):49006-49014(2003)