

SCGB1D2 Antibody (Center)
Affinity Purified Rabbit Polyclonal Antibody (Pab)
Catalog # AP13793c**Specification**

SCGB1D2 Antibody (Center) - Product Information

Application	WB,E
Primary Accession	O95969
Other Accession	NP_006542.1
Reactivity	Human
Host	Rabbit
Clonality	Polyclonal
Isotype	Rabbit IgG
Calculated MW	9925
Antigen Region	22-50

SCGB1D2 Antibody (Center) - Additional Information**Gene ID** 10647**Other Names**

Secretoglobin family 1D member 2, Lipophilin-B, SCGB1D2, LIPHB, LPNB

Target/Specificity

This SCGB1D2 antibody is generated from rabbits immunized with a KLH conjugated synthetic peptide between 22-50 amino acids from the Central region of human SCGB1D2.

Dilution

WB~~1:1000

E~~Use at an assay dependent concentration.

Format

Purified polyclonal antibody supplied in PBS with 0.09% (W/V) sodium azide. This antibody is purified through a protein A column, followed by peptide affinity purification.

Storage

Maintain refrigerated at 2-8°C for up to 2 weeks. For long term storage store at -20°C in small aliquots to prevent freeze-thaw cycles.

Precautions

SCGB1D2 Antibody (Center) is for research use only and not for use in diagnostic or therapeutic procedures.

SCGB1D2 Antibody (Center) - Protein Information**Name** SCGB1D2**Synonyms** LIPHB, LPNB

Function May bind androgens and other steroids, may also bind estramustine, a chemotherapeutic agent used for prostate cancer. May be under transcriptional regulation of steroid hormones.

Cellular Location
Secreted.

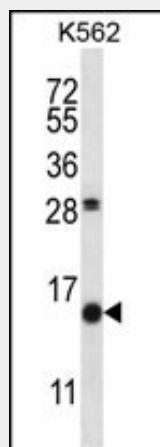
Tissue Location
Highest expression was found in skeletal muscle. Expressed as well in thymus, trachea, kidney, steroid responsive tissues (prostate, testis, uterus, breast and ovary) and salivary gland

SCGB1D2 Antibody (Center) - Protocols

Provided below are standard protocols that you may find useful for product applications.

- [Western Blot](#)
- [Blocking Peptides](#)
- [Dot Blot](#)
- [Immunohistochemistry](#)
- [Immunofluorescence](#)
- [Immunoprecipitation](#)
- [Flow Cytometry](#)
- [Cell Culture](#)

SCGB1D2 Antibody (Center) - Images



SCGB1D2 Antibody (Center) (Cat. #AP13793c) western blot analysis in K562 cell line lysates (35ug/lane). This demonstrates the SCGB1D2 antibody detected the SCGB1D2 protein (arrow).

SCGB1D2 Antibody (Center) - Background

The protein encoded by this gene is a member of the lipophilin subfamily, part of the uteroglobin superfamily, and is an ortholog of prostatein, the major secretory glycoprotein of the rat ventral prostate gland. Lipophilin gene products are widely expressed in normal tissues, especially in endocrine-responsive organs. Assuming that human lipophilins are the functional counterparts of prostatein, they may be transcriptionally regulated by steroid hormones, with the ability to bind androgens, other steroids and possibly bind and concentrate estramustine, a

chemotherapeutic agent widely used for prostate cancer. Although the gene has been reported to be on chromosome 10, this sequence appears to be from a cluster of genes on chromosome 11 that includes mammaglobin 2.

SCGB1D2 Antibody (Center) - References

Sjodin, A., et al. Anticancer Res. 28 (3A), 1493-1498 (2008) :
Culleton, J., et al. Int. J. Cancer 120(5):1087-1092(2007)
Sjodin, A., et al. Acta Neuropathol. 109(4):381-386(2005)
Carter, D., et al. Clin. Cancer Res. 9(2):749-754(2003)
Carter, D., et al. Biochemistry 41(21):6714-6722(2002)