

**S100A7 Antibody (N-term)**  
**Affinity Purified Rabbit Polyclonal Antibody (Pab)**  
**Catalog # AP13794a****Specification**

---

**S100A7 Antibody (N-term) - Product Information**

Application	IHC-P, WB,E
Primary Accession	<a href="#">P31151</a>
Other Accession	<a href="#">NP_002954.2</a>
Reactivity	Human
Host	Rabbit
Clonality	Polyclonal
Isotype	Rabbit IgG
Calculated MW	11471
Antigen Region	2-31

**S100A7 Antibody (N-term) - Additional Information****Gene ID** 6278**Other Names**

Protein S100-A7, Psoriasin, S100 calcium-binding protein A7, S100A7, PSOR1, S100A7C

**Target/Specificity**

This S100A7 antibody is generated from rabbits immunized with a KLH conjugated synthetic peptide between 2-31 amino acids from the N-terminal region of human S100A7.

**Dilution**

IHC-P~~1:10~50

WB~~1:1000

E~~Use at an assay dependent concentration.

**Format**

Purified polyclonal antibody supplied in PBS with 0.09% (W/V) sodium azide. This antibody is purified through a protein A column, followed by peptide affinity purification.

**Storage**

Maintain refrigerated at 2-8°C for up to 2 weeks. For long term storage store at -20°C in small aliquots to prevent freeze-thaw cycles.

**Precautions**

S100A7 Antibody (N-term) is for research use only and not for use in diagnostic or therapeutic procedures.

**S100A7 Antibody (N-term) - Protein Information****Name** S100A7

**Synonyms** PSOR1, S100A7C

**Cellular Location**

Cytoplasm. Secreted. Note=Secreted by a non-classical secretory pathway

**Tissue Location**

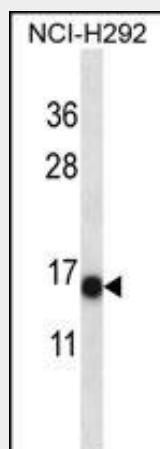
Fetal ear, skin, and tongue and human cell lines. Highly up-regulated in psoriatic epidermis. Also highly expressed in the urine of bladder squamous cell carcinoma (SCC) bearing patients

**S100A7 Antibody (N-term) - Protocols**

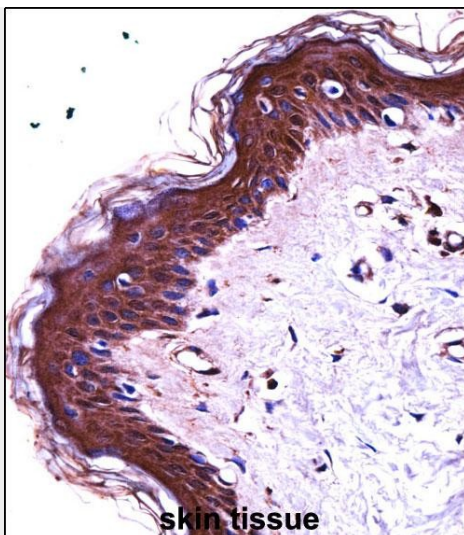
Provided below are standard protocols that you may find useful for product applications.

- [Western Blot](#)
- [Blocking Peptides](#)
- [Dot Blot](#)
- [Immunohistochemistry](#)
- [Immunofluorescence](#)
- [Immunoprecipitation](#)
- [Flow Cytometry](#)
- [Cell Culture](#)

**S100A7 Antibody (N-term) - Images**



S100A7 Antibody (N-term) (Cat. #AP13794a) western blot analysis in NCI-H292 cell line lysates (35ug/lane). This demonstrates the S100A7 antibody detected the S100A7 protein (arrow).



S100A7 Antibody (N-term) (AP13794a) immunohistochemistry analysis in formalin fixed and paraffin embedded human skin tissue followed by peroxidase conjugation of the secondary antibody and DAB staining. This data demonstrates the use of S100A7 Antibody (N-term) for immunohistochemistry. Clinical relevance has not been evaluated.

#### **S100A7 Antibody (N-term) - Background**

The protein encoded by this gene is a member of the S100 family of proteins containing 2 EF-hand calcium-binding motifs. S100 proteins are localized in the cytoplasm and/or nucleus of a wide range of cells, and involved in the regulation of a number of cellular processes such as cell cycle progression and differentiation. S100 genes include at least 13 members which are located as a cluster on chromosome 1q21. This protein differs from the other S100 proteins of known structure in its lack of calcium binding ability in one EF-hand at the N-terminus. This protein is markedly over-expressed in the skin lesions of psoriatic patients, but is excluded as a candidate gene for familial psoriasis susceptibility. The exact function of this protein is not known.

#### **S100A7 Antibody (N-term) - References**

West, N.R., et al. *Oncogene* 29(14):2083-2092(2010)  
Tieu, D.D., et al. *J. Allergy Clin. Immunol.* 125(3):667-675(2010)  
Tripathi, S.C., et al. *PLoS ONE* 5 (8), E11939 (2010) :  
Johnatty, S.E., et al. *PLoS Genet.* 6 (7), E1001016 (2010) :  
West, N.R., et al. *Protein Sci.* 18(12):2615-2623(2009)